

14708.TIF

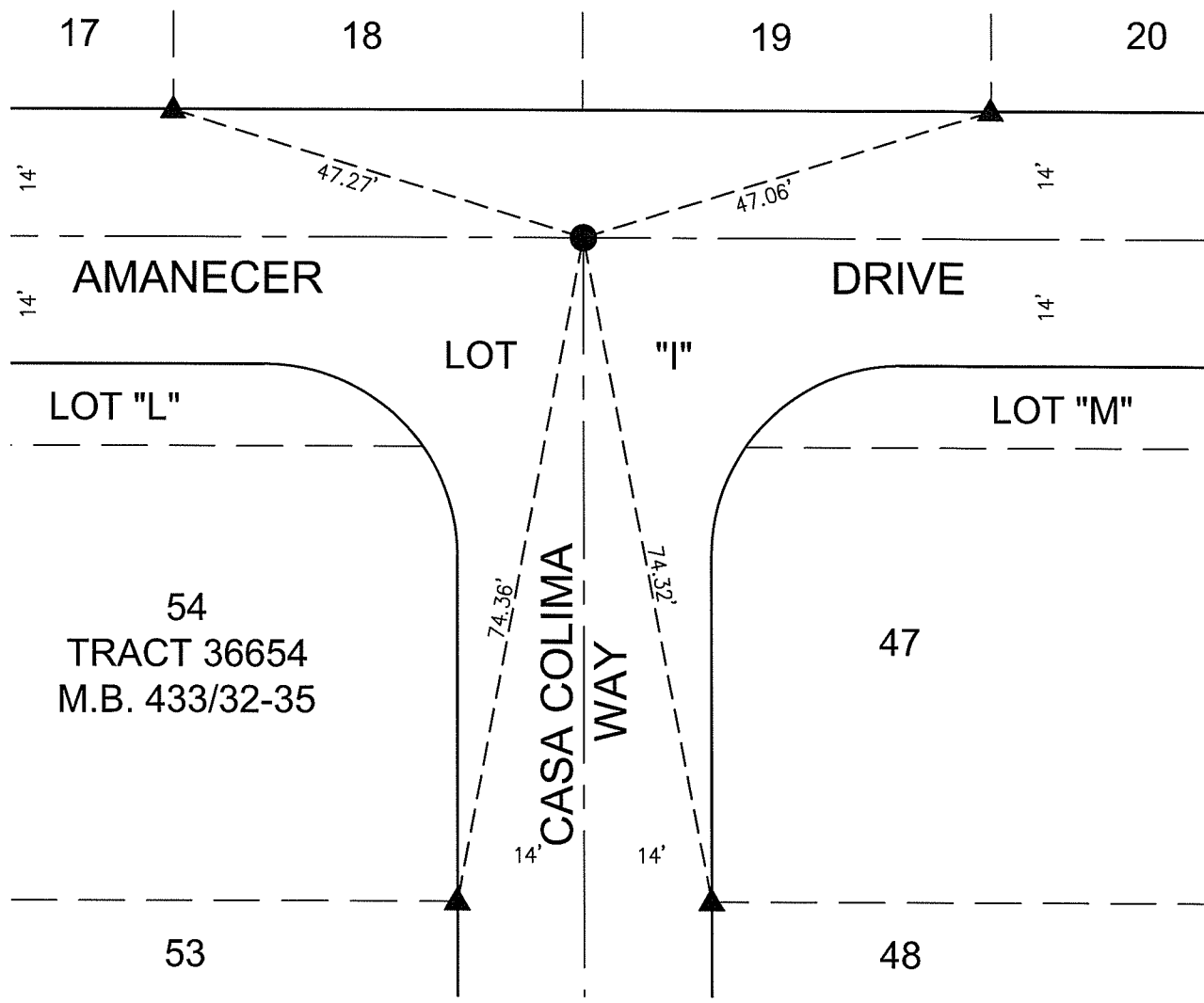
# TRACT 36654

## LEGEND

- SET SPIKE & WASHER, STAMPED "LS 5022", FLUSH, PER TRACT 36654
- ▲ SET LEAD, TACK & TAG, STAMPED "LS 5022", IN TOP OF CURB, PER TRACT 36654



SCALE: N.T.S.



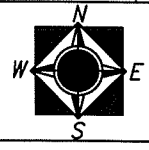
STREET: AMANECER DRIVE  
X-STREET: CASA COLIMA WAY  
OFFICIAL USE ONLY

SCALE: N.T.S.  
 DATE: 03/24/16  
 DRAWN BY: JRR  
 F.B.:  
 TR-SEC: 5 T.3S., R.5W.

## OFFICIAL TIE PLAT

CITY OF RIVERSIDE

THESE TIES ARE FOR THE PURPOSE OF PERPETUATING THE FOUND MONUMENTATION. NO CLAIM IS MADE AS TO THE RELATIONSHIP OF THE POINTS OR LINES SHOWN HEREON TO TRUE BOUNDARY LOCATIONS



SHEET 5 OF 8