

SWING TIES

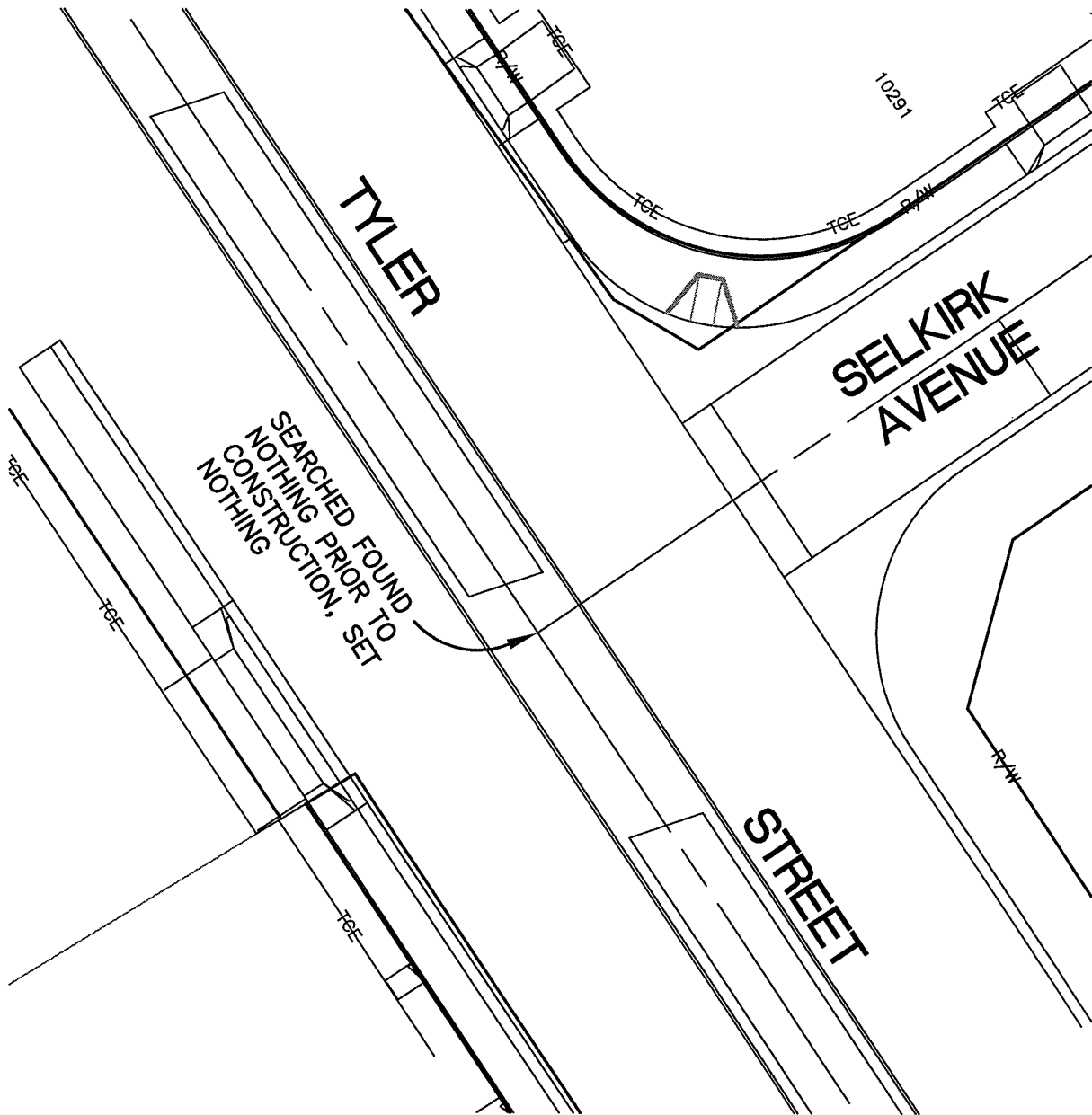
HISTORICAL DATA
7949.TIF

14725.TIF

STREET: TYLER STREET

OFFICIAL USE ONLY

X-STREET: SELKIRK AVENUE



SCALE: 1"=30'

DATE: October 19, 2017

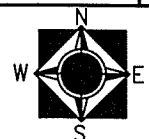
DRAWN BY: JDF

F.B.:

SEC: 12 T.3S.,R.6W

OFFICIAL TIE PLAT CITY OF RIVERSIDE

THESE TIES ARE FOR THE PURPOSE OF PERPETUATING THE FOUND MONUMENTATION. NO CLAIM IS MADE AS THE RELATIONSHIP OF THE POINTS OR LINES SHOWN HEREON TO TRUE BOUNDARY LOCATIONS



SHEET 1 OF 1