

# SWING TIES

HISTORICAL DATA

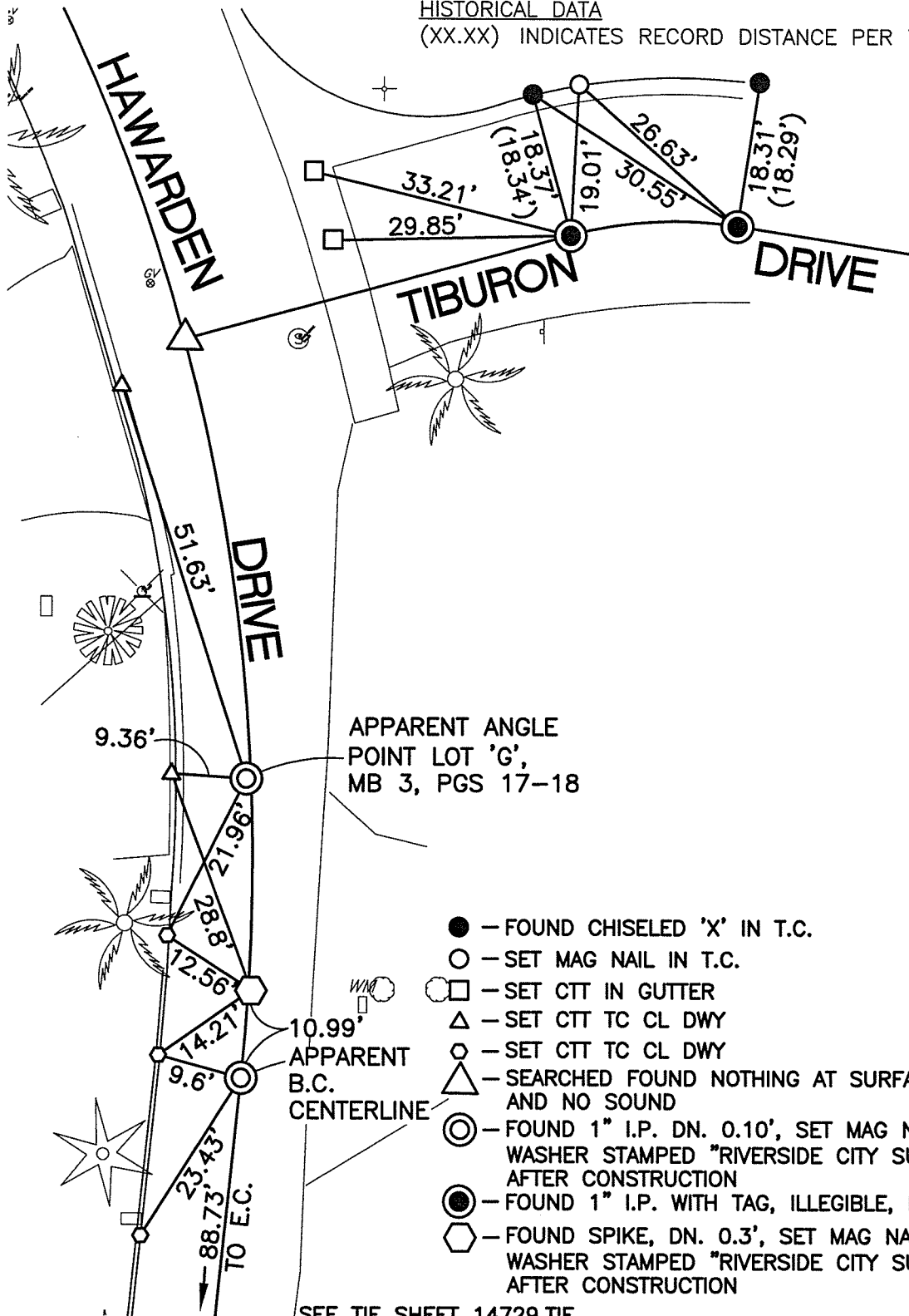
(XX.XX) INDICATES RECORD DISTANCE PER 7752.TIF

14728.TIF

STREET: HAWARDEN DRIVE

OFFICIAL USE ONLY

X-STREET: TIBURON DRIVE



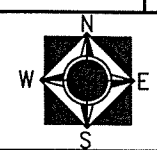
- - FOUND CHISELED 'X' IN T.C.
- - SET MAG NAIL IN T.C.
- - SET CTT IN GUTTER
- △ - SET CTT TC CL DWY
- ◇ - SET CTT TC CL DWY
- △ (with slash) - SEARCHED FOUND NOTHING AT SURFACE AND NO SOUND
- ⊙ - FOUND 1" I.P. DN. 0.10', SET MAG NAIL AND WASHER STAMPED "RIVERSIDE CITY SURVEYOR" AFTER CONSTRUCTION
- (with dot) - FOUND 1" I.P. WITH TAG, ILLEGIBLE, FLUSH
- ◇ (with dot) - FOUND SPIKE, DN. 0.3', SET MAG NAIL AND WASHER STAMPED "RIVERSIDE CITY SURVEYOR" AFTER CONSTRUCTION

SEE TIE SHEET 14729.TIF

SCALE:	1"=20'
DATE:	NOVEMBER 20, 17
DRAWN BY:	JDF
F.B.:	
SEC:	2 T.3S., R56W

## OFFICIAL TIE PLAT CITY OF RIVERSIDE

THESE TIES ARE FOR THE PURPOSE OF PERPETUATING THE FOUND MONUMENTATION. NO CLAIM IS MADE AS THE RELATIONSHIP OF THE POINTS OR LINES SHOWN HEREON TO TRUE BOUNDARY LOCATIONS



SHEET 1 OF 1