

# SWING TIES

HISTORICAL DATA  
4070.TIF

14729.TIF

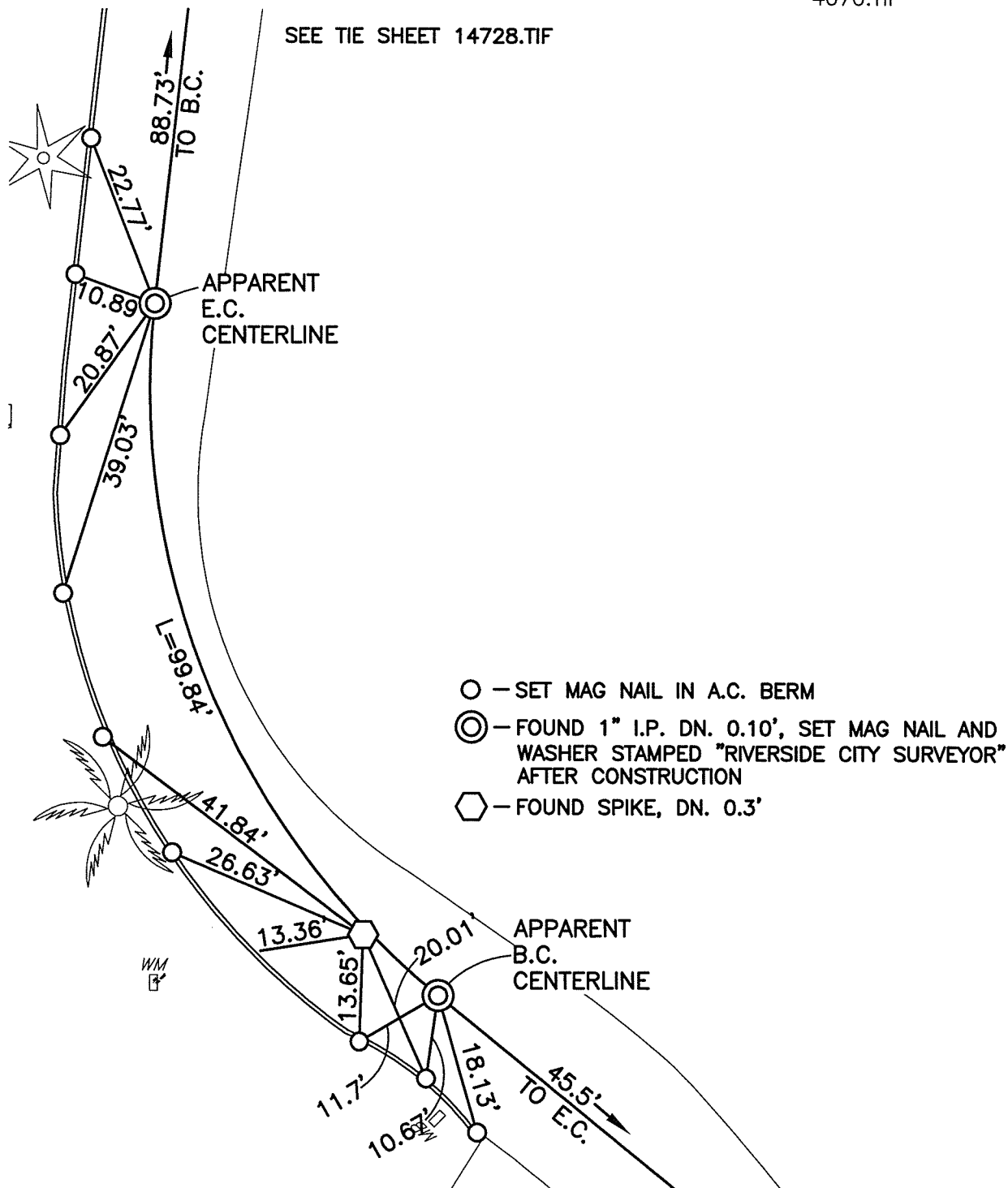
STREET: HAWARDEN DRIVE

OFFICIAL USE ONLY

X-STREET:

E.C AND B.C S'LY OF  
TIBURON DRIVE

SEE TIE SHEET 14728.TIF



- - SET MAG NAIL IN A.C. BERM
- ⊙ - FOUND 1" I.P. DN. 0.10', SET MAG NAIL AND WASHER STAMPED "RIVERSIDE CITY SURVEYOR" AFTER CONSTRUCTION
- ⬡ - FOUND SPIKE, DN. 0.3'

SEE TIE SHEET 14730.TIF

SCALE:	1"=20'
DATE:	NOVEMBER 20, 17
DRAWN BY:	JDF
F.B.:	
SEC:	2 T.3S., R56W

## OFFICIAL TIE PLAT CITY OF RIVERSIDE

THESE TIES ARE FOR THE PURPOSE OF PERPETUATING THE FOUND MONUMENTATION. NO CLAIM IS MADE AS THE RELATIONSHIP OF THE POINTS OR LINES SHOWN HEREON TO TRUE BOUNDARY LOCATIONS



SHEET 1 OF 1