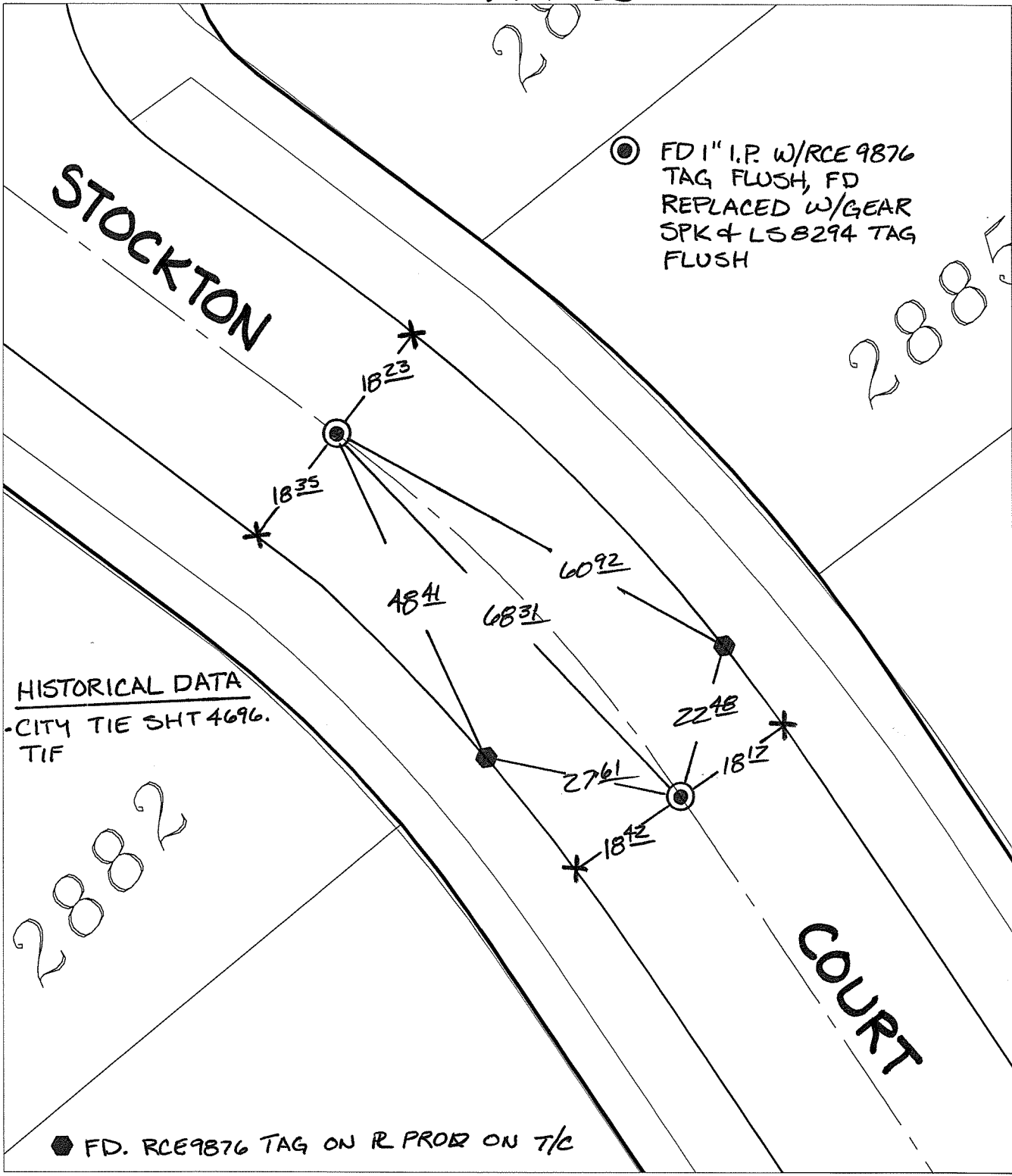


14740.TIF

Street: STOCKTON COURT X-Street: S. OF LINCOLN AVENUE
OFFICIAL USE ONLY

SWING TIES



HISTORICAL DATA
CITY TIE SHT 4696.
TIF

● FD. RCE9876 TAG ON R PROD ON T/C

- × FD. Ramset Nail on T/C
- FD. LD. & TK. on T/C
- FD. "C" Nail on T/C
- Set LD. & TK. on T/C
- P.K. and City Engineer tag to be set @ surface after street construction is complete. (If possible)

Scale: 1" = 20'

Date: 05/11/16

Drawn by: pw

F.B.:

TR-Sec: T3SR5W-18

OFFICIAL TIE PLAT

CITY OF RIVERSIDE

These ties are for the purpose of perpetuating the found monumentation. No claim is made as to the relationship of the points or lines shown hereon to true boundary locations.



Sheet 1 of 1
Cadme MB: 81-3