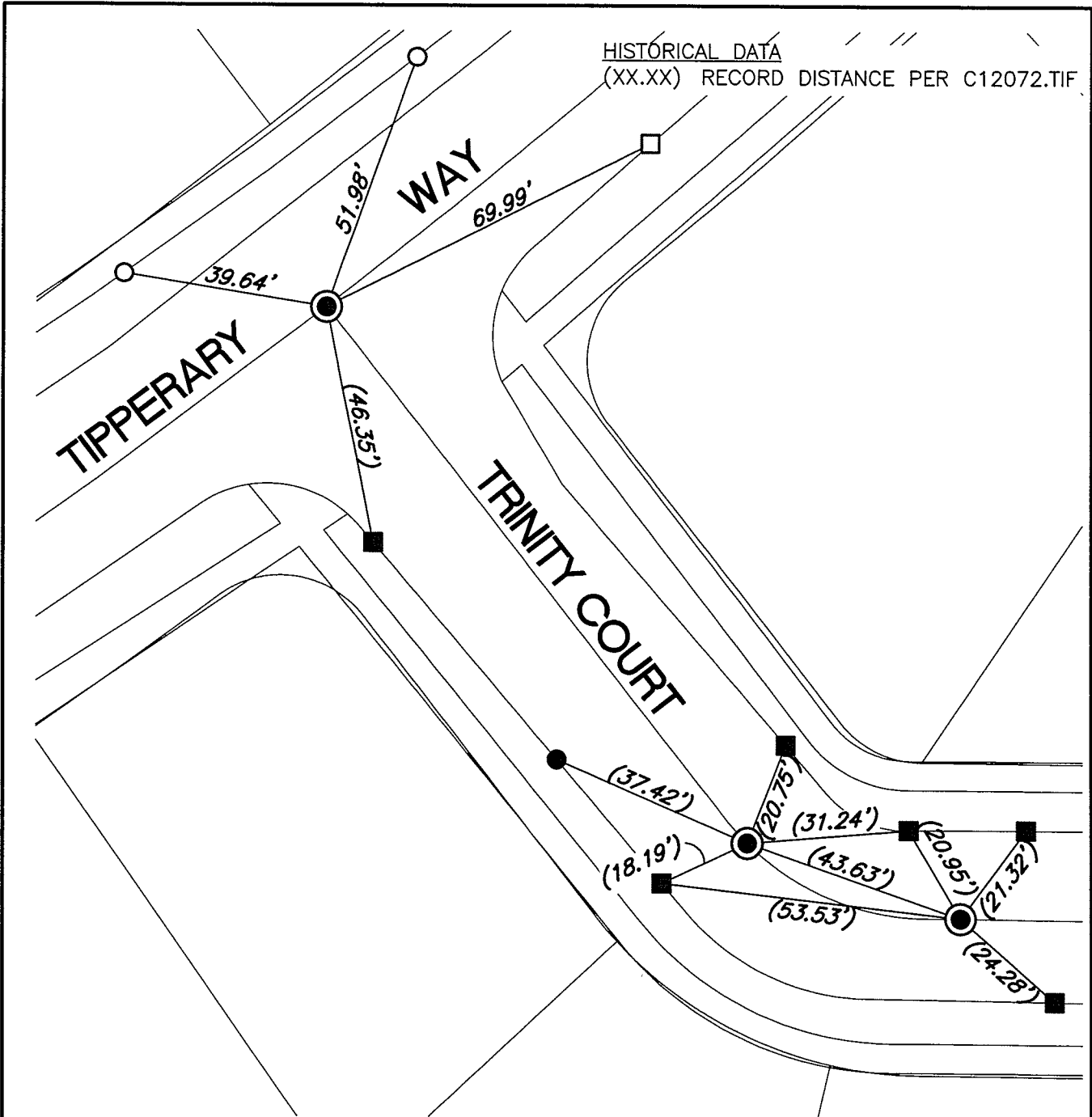


SWING TIES

14742.TIF

STREET: TIPPERARY WAY

OFFICIAL USE ONLY
X-STREET: TRINITY COURT



- - FOUND NAIL AND CITY TIE TAG IN T.C.
- - FOUND NAIL SHANK IN T.C.
- - SET C-NAIL IN T.C.
- - SET MAG NAIL T.C.
- ⊙ - FOUND P.K. NAIL AND WASHER STAMPED "RIVERSIDE CITY SURVEYOR"

SCALE: 1"=30'
 DATE: DECEMBER 28, 2017
 DRAWN BY: JDF
 F.B.:
 SEC: 34 T.2S., R.5W

OFFICIAL TIE PLAT CITY OF RIVERSIDE

THESE TIES ARE FOR THE PURPOSE OF PERPETUATING THE FOUND MONUMENTATION. NO CLAIM IS MADE AS THE RELATIONSHIP OF THE POINTS OR LINES SHOWN HEREON TO TRUE BOUNDARY LOCATIONS

