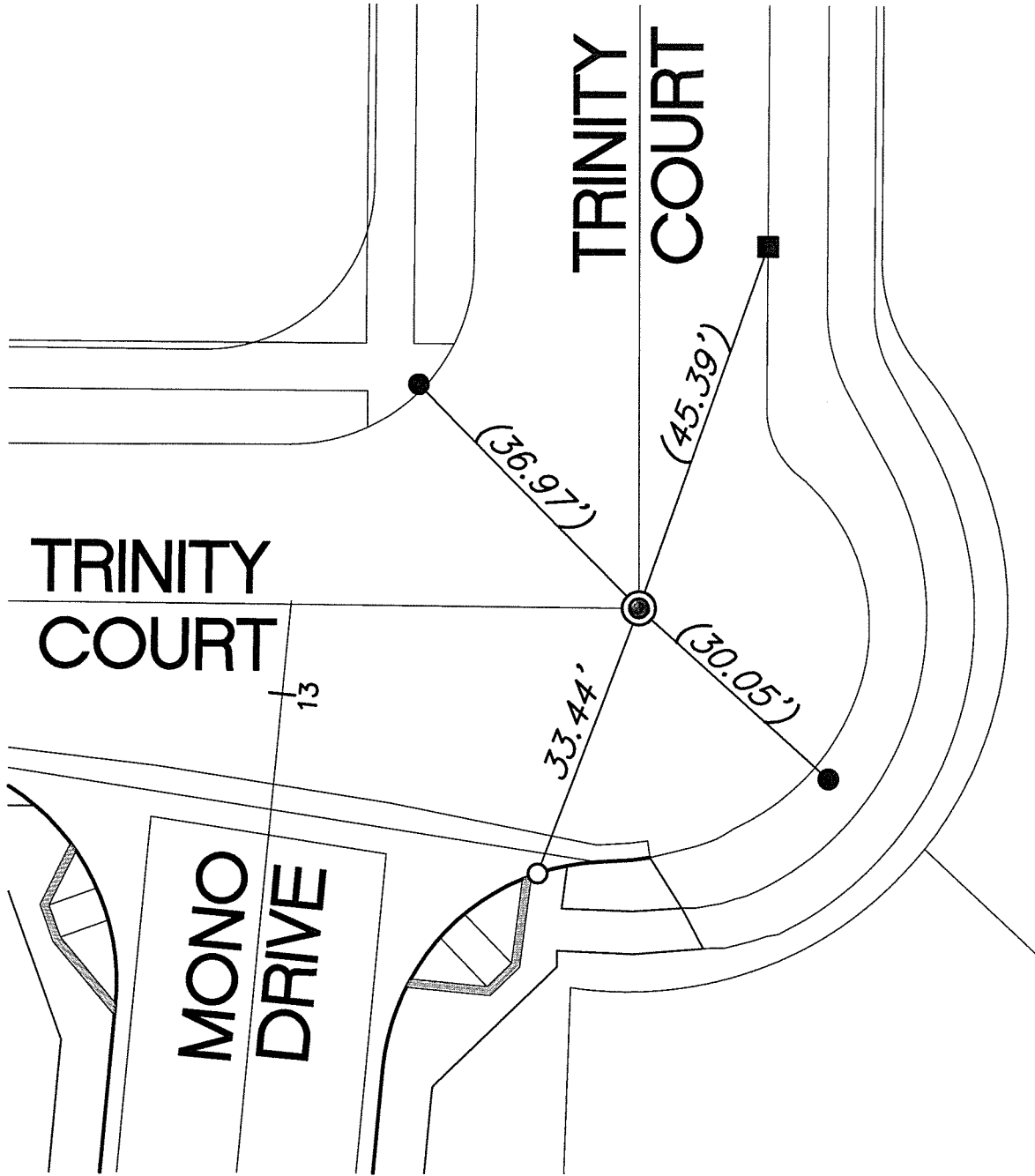


SWING TIES

HISTORICAL DATA
 (XX.XX) RECORD DISTANCE PER 12061.TIF



- — FOUND NAIL AND CITY TIE TAG IN T.C.
- — FOUND LEAD AND TACK IN T.C.
- — SET NAIL AND CITY TIE TAG IN T.C.
- ⊙ — FOUND PK NAIL AND WASHER STAMPED 'RIVERSIDE CITY SURVEYOR', FLUSH

STREET: TIPPERARY WAY
 X-STREET: TRINITY COURT KNUCKLE S'LY
 OFFICIAL USE ONLY

SCALE: 1"=20'
 DATE: DECEMBER 28, 2017
 DRAWN BY: JDF
 F.B.:
 SEC: 34 T.2S., R.5W

OFFICIAL TIE PLAT CITY OF RIVERSIDE

THESE TIES ARE FOR THE PURPOSE OF PERPETUATING THE FOUND MONUMENTATION. NO CLAIM IS MADE AS THE RELATIONSHIP OF THE POINTS OR LINES SHOWN HEREON TO TRUE BOUNDARY LOCATIONS



SHEET 1 OF 1