

# SWING TIES

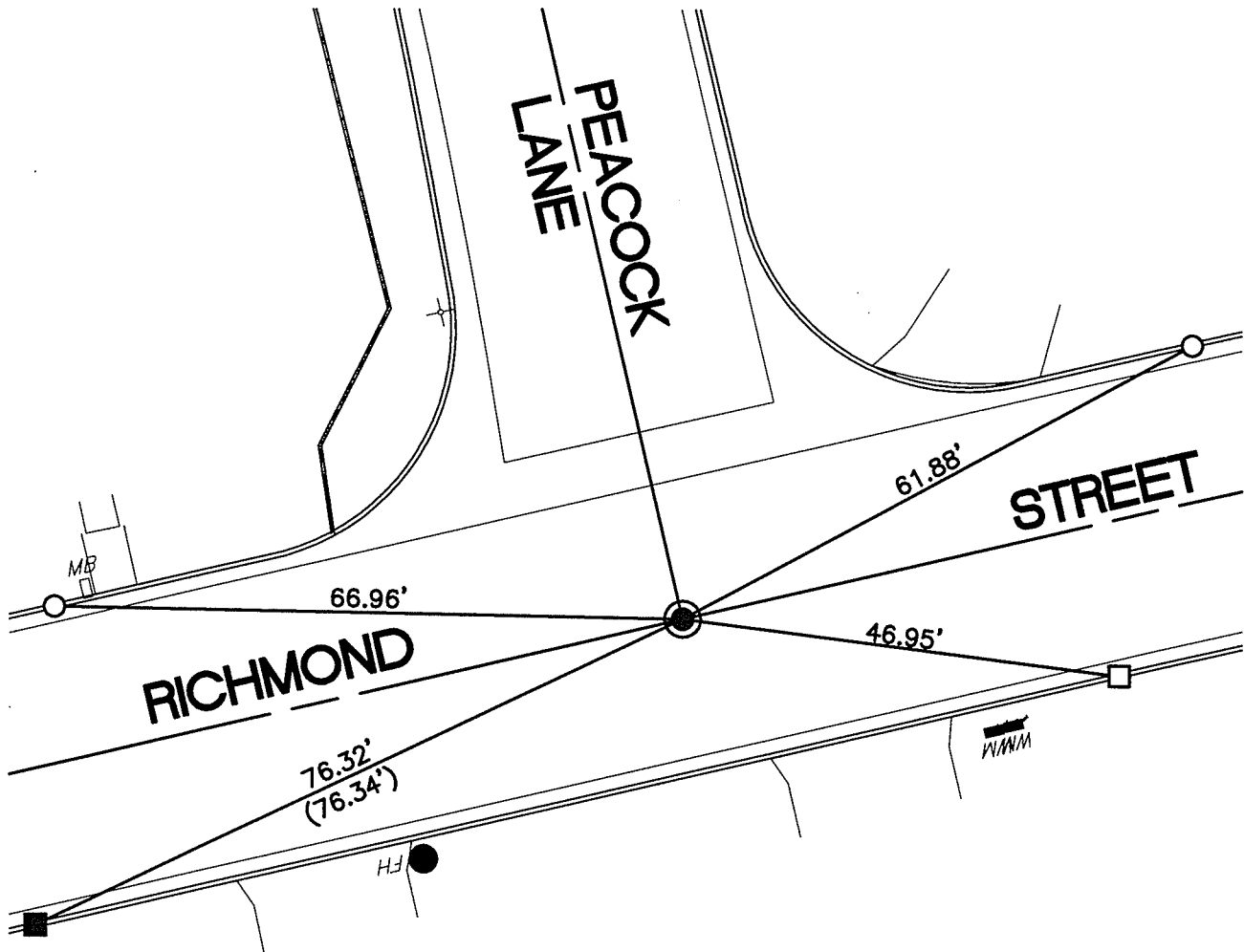
**HISTORICAL DATA**

(XX.XX) INDICATES RECORD DISTANCE PER 11962.TIF

11962.TIF

STREET: PEACOCK LANE

OFFICIAL USE ONLY  
X-STREET: RICHMOND STREET



- - FOUND NAIL AND CITY TIE TAG IN T.C.
- - SET CTT IN T.C.
- - SET MAG NAIL IN T.C.
- - FOUND 1" I.P., WITH TAG 'RE 1229', PER M.B. 24/81, DN. 0.95'

SCALE: 1"=20'  
 DATE: JANUARY 8, 2018  
 DRAWN BY: JDF  
 F.B.:  
 SEC: 10 T.3S.,R.6W

## OFFICIAL TIE PLAT CITY OF RIVERSIDE

THESE TIES ARE FOR THE PURPOSE OF PERPETUATING THE FOUND MONUMENTATION. NO CLAIM IS MADE AS THE RELATIONSHIP OF THE POINTS OR LINES SHOWN HEREON TO TRUE BOUNDARY LOCATIONS

