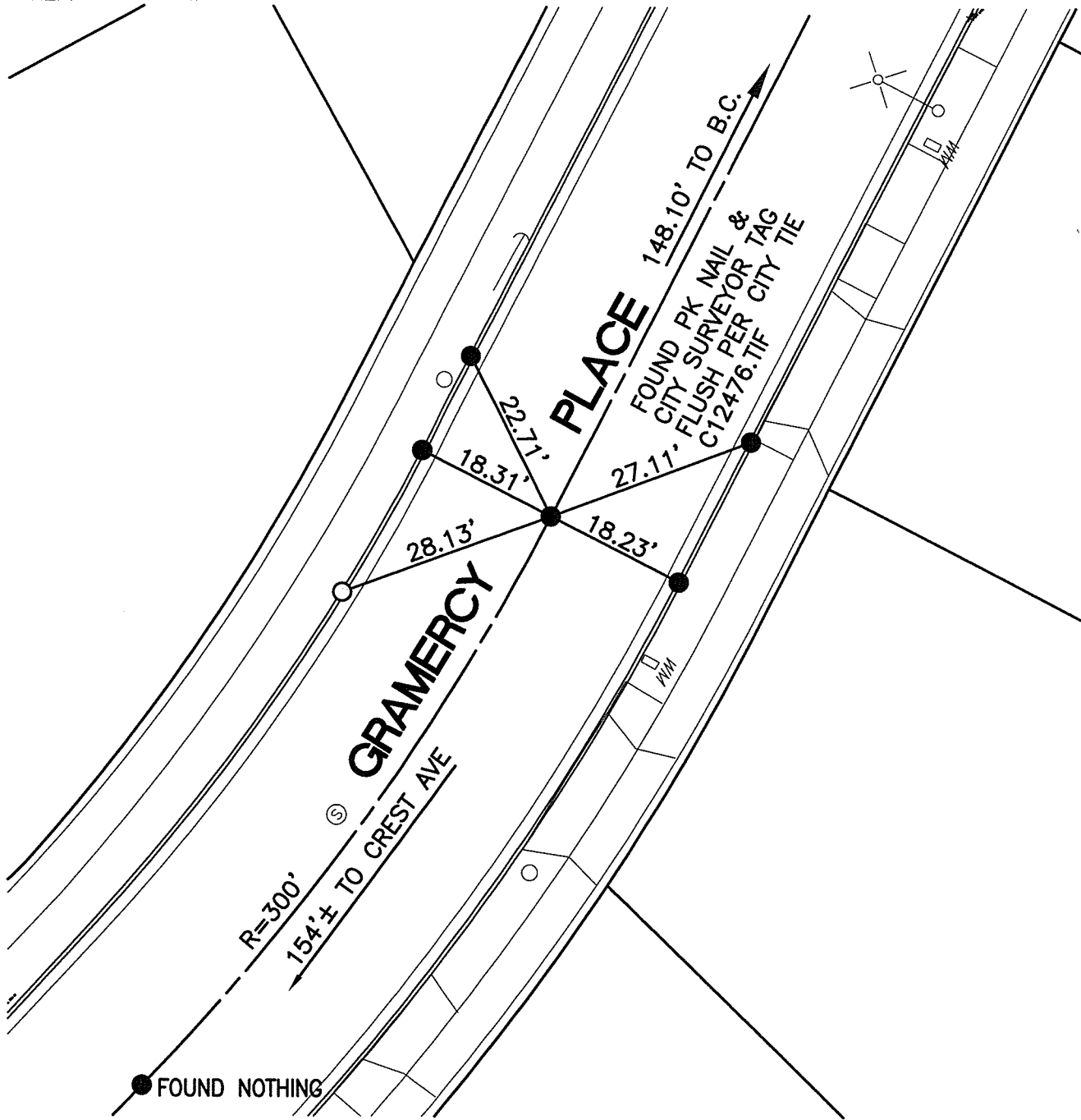


SWING TIES

REF: C12476.TIF



STREET: GRAMERCY PLACE

X-STREET: E.C. N.E. OF CREST AVENUE

OFFICIAL USE ONLY

- - SET NAIL & CITY TIE TAG IN T.C.
- - FOUND LEAD & TACK IN T.C.

SCALE: 1"=20'

DATE: NOVEMBER 21, 2016

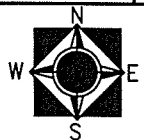
DRAWN BY: CURT

F.B.:

SEC: 2 T.3S., R.6W.

OFFICIAL TIE PLAT CITY OF RIVERSIDE

THESE TIES ARE FOR THE PURPOSE OF PERPETUATING THE FOUND MONUMENTATION. NO CLAIM IS MADE AS THE RELATIONSHIP OF THE POINTS OR LINES SHOWN HEREON TO TRUE BOUNDARY LOCATIONS



SHEET 1 OF 1