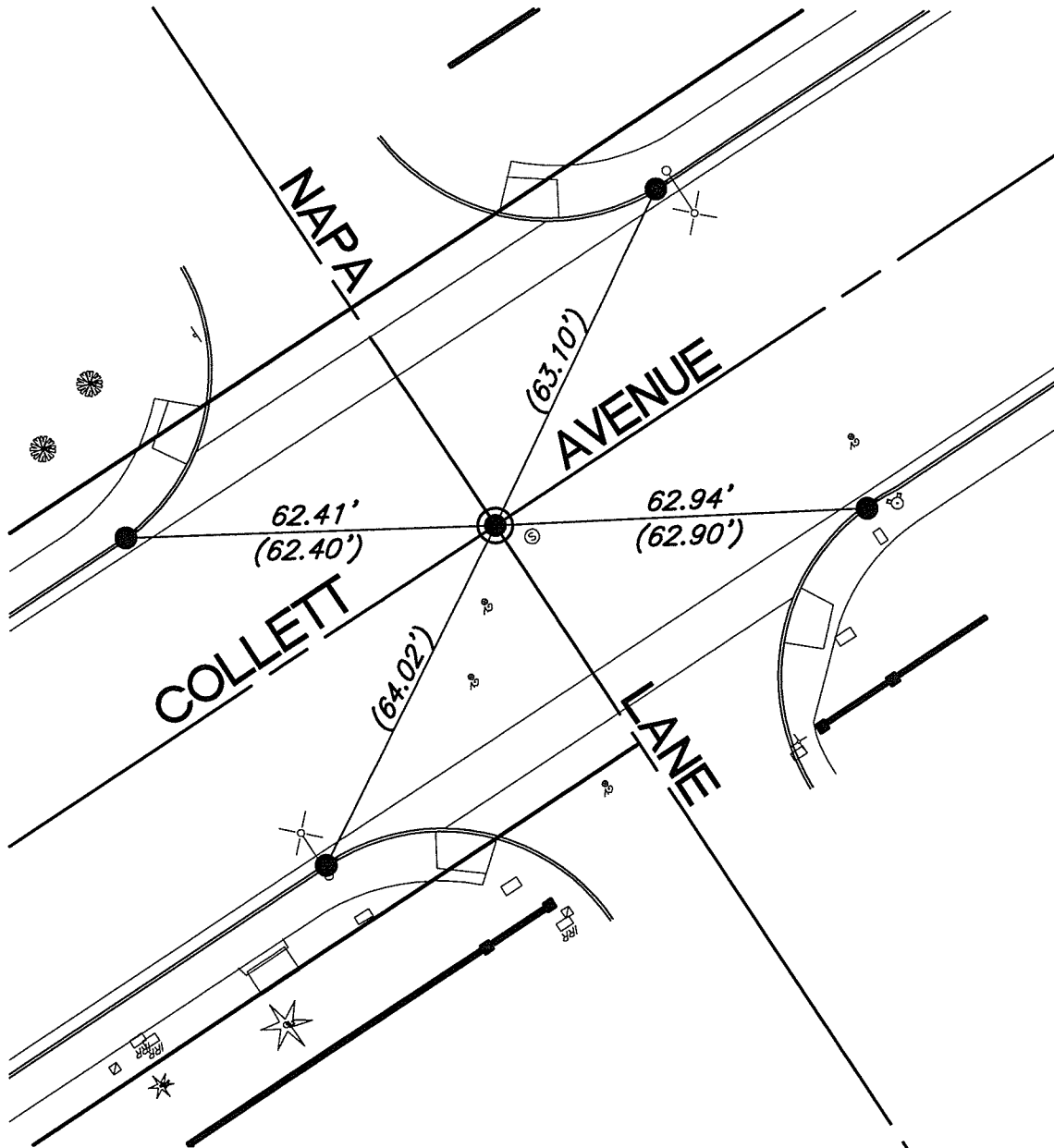


SWING TIES

HISTORICAL DATA
1442.TIF



- — FOUND LEAD AND TACK IN T.C.
- ⊙ — FOUND SPIKE AND WASHER STAMPED "LS 5390" PER 1442.TIF

14752.TIF

STREET: COLLETT AVENUE

X-STREET: NAPA LANE

OFFICIAL USE ONLY

SCALE:	1"=30'
DATE:	JANUARY 8, 2018
DRAWN BY:	JDF
F.B.:	
SEC:	22 T.3S.,R.6W

OFFICIAL TIE PLAT
CITY OF RIVERSIDE

THESE TIES ARE FOR THE PURPOSE OF PERPETUATING THE FOUND MONUMENTATION. NO CLAIM IS MADE AS THE RELATIONSHIP OF THE POINTS OR LINES SHOWN HEREON TO TRUE BOUNDARY LOCATIONS

SHEET 1 OF 1