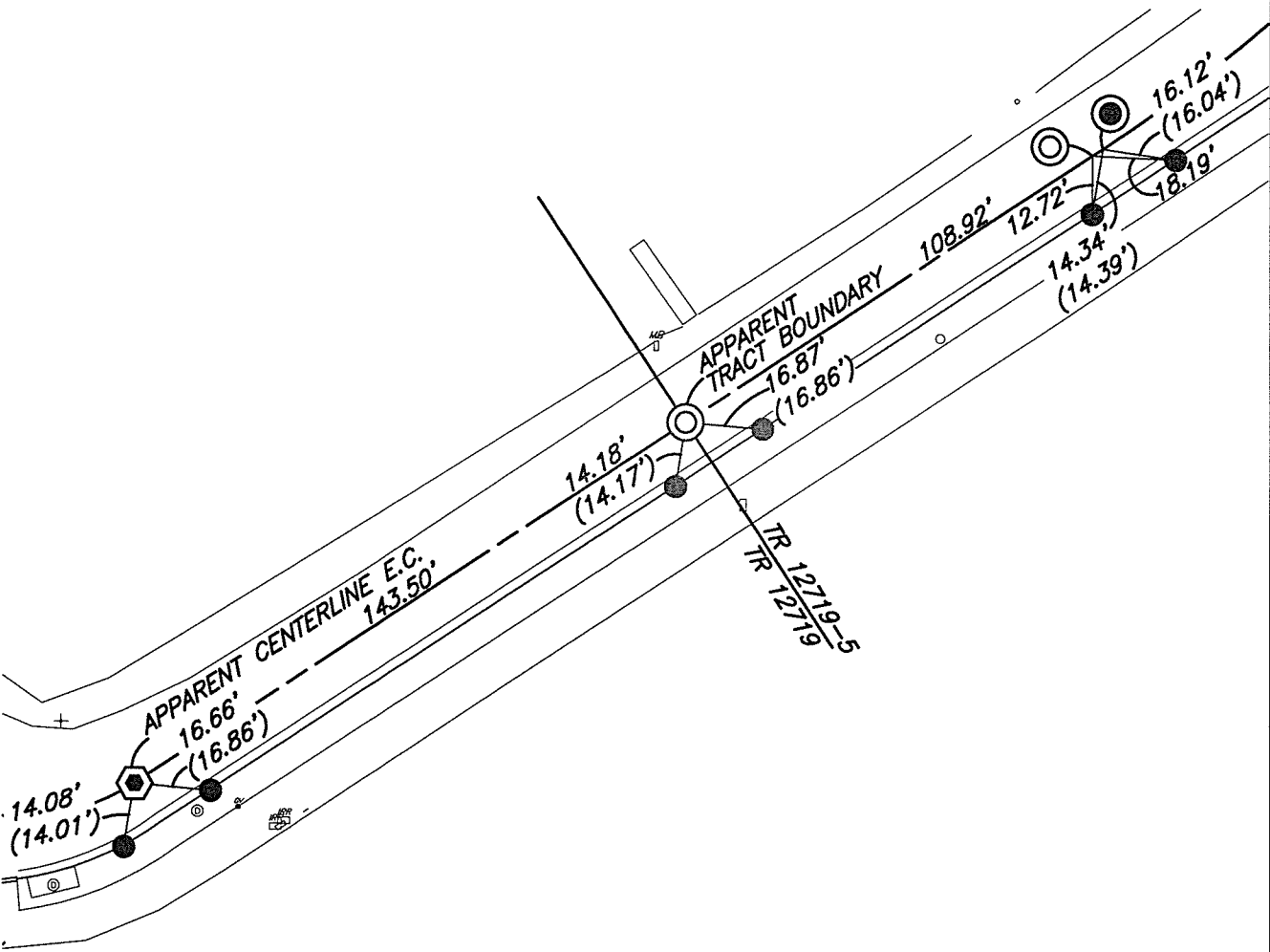


SWING TIES

HISTORICAL DATA

(XX.XX) INDICATES RECORD DISTANCE PER 9439.TIF



- - FOUND LEAD AND TACK IN T.C.
- ⊙ - FOUND NOTHING NO SOUND, SET MAG NAIL AND WASHER STAMPED "RIVERSIDE CITY SURVEYOR" AFTER CONSTRUCTION
- ⦿ - FOUND 1" I.P., NO TAG, DN. 0.15', APPARENT CENTERLINE E.C.
- ⬡ - FOUND 1" I.P., WITH PLASTIC PLUG ILLEGIBLE, DN. 0.10'

14754.TIF
STREET: HUDDEN STREET
X-STREET: 410' SW'LY OF AMBS DRIVE
OFFICIAL USE ONLY

SCALE:	1"=40'
DATE:	JANUARY 9, 2018
DRAWN BY:	JDF
F.B.:	
SEC:	15 T.3S.,R.6W

OFFICIAL TIE PLAT CITY OF RIVERSIDE

THESE TIES ARE FOR THE PURPOSE OF PERPETUATING THE FOUND MONUMENTATION. NO CLAIM IS MADE AS THE RELATIONSHIP OF THE POINTS OR LINES SHOWN HEREON TO TRUE BOUNDARY LOCATIONS

