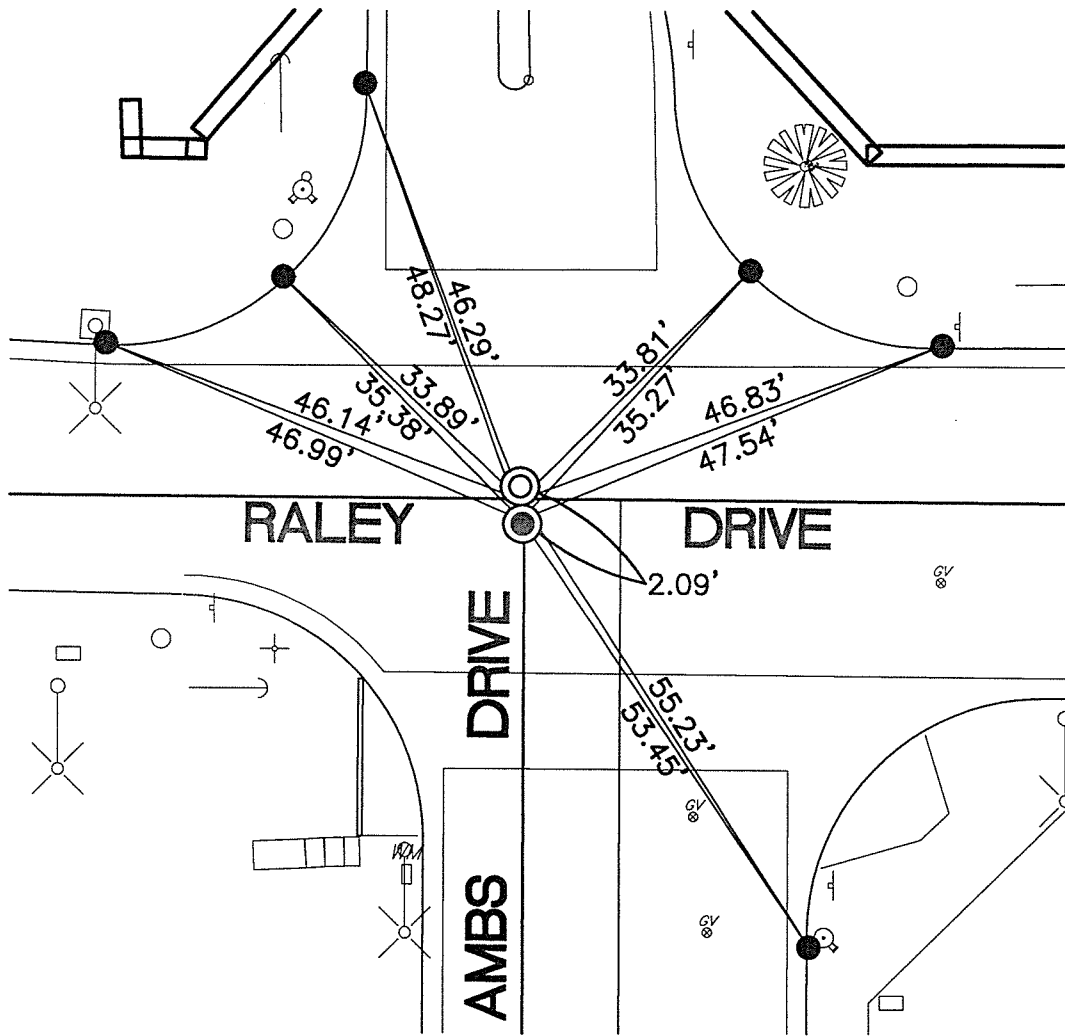


SWING TIES

14756.T1E

STREET: AMBS DRIVE

OFFICIAL USE ONLY
X-STREET: RALEY DRIVE

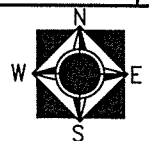


- — FOUND LEAD AND TACK IN T.C.
- ⊙ — FOUND 1" I.P. WITH TAG STAMPED "LS 5174", FLUSH PER PM 34631 PMB 242/69-71
- ⊙ — FOUND SPIKE AND WASHER STAMPED "LS", FLUSH PER PM 34631 PMB 242/69-71

SCALE:	1"=20'
DATE:	JANUARY 9, 2018
DRAWN BY:	JDF
F.B.:	
SEC:	15 T.3S.,R.6W

OFFICIAL TIE PLAT CITY OF RIVERSIDE

THESE TIES ARE FOR THE PURPOSE OF PERPETUATING THE FOUND MONUMENTATION. NO CLAIM IS MADE AS THE RELATIONSHIP OF THE POINTS OR LINES SHOWN HEREON TO TRUE BOUNDARY LOCATIONS



SHEET 1 OF 1