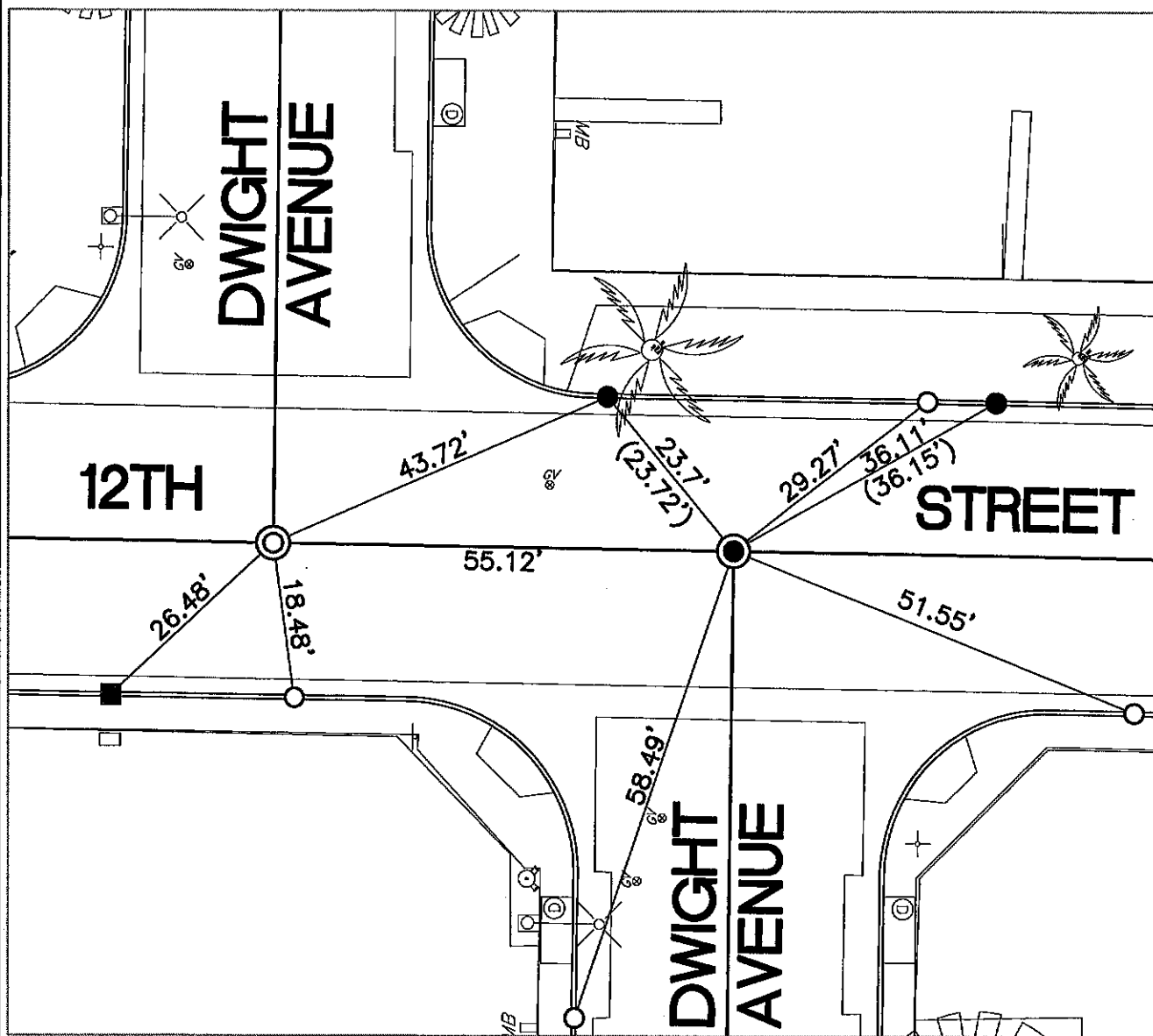


SWING TIES

14757.TIF

HISTORICAL DATA

(XX.XX) INDICATES RECORD DISTANCE PER 11735.TIF



STREET: DWIGHT AVENUE

OFFICIAL USE ONLY

X-STREET: 12th STREET

- - FOUND NAIL SHANK IN T.C.
- - FOUND CHISELED 'X' IN T.C.
- - SET CTT IN T.C.
- ⊙ - FOUND C-NAIL, PER 9292.TIF, REMOVED AND SET MAG NAIL AND WASHER STAMPED "RIVERSIDE CITY SURVEYOR"
- ⊙ - FOUND MAG NAIL AND WASHER STAMPED "RIVERSIDE CITY SURVEYOR"

SCALE:	1"=20'
DATE:	JANUARY 18, 2018
DRAWN BY:	JDF
F.B.:	
SEC:	25 T.2S., R.5W.

OFFICIAL TIE PLAT CITY OF RIVERSIDE

THESE TIES ARE FOR THE PURPOSE OF PERPETUATING THE FOUND MONUMENTATION. NO CLAIM IS MADE AS THE RELATIONSHIP OF THE POINTS OR LINES SHOWN HEREON TO TRUE BOUNDARY LOCATIONS



SHEET 1 OF 1