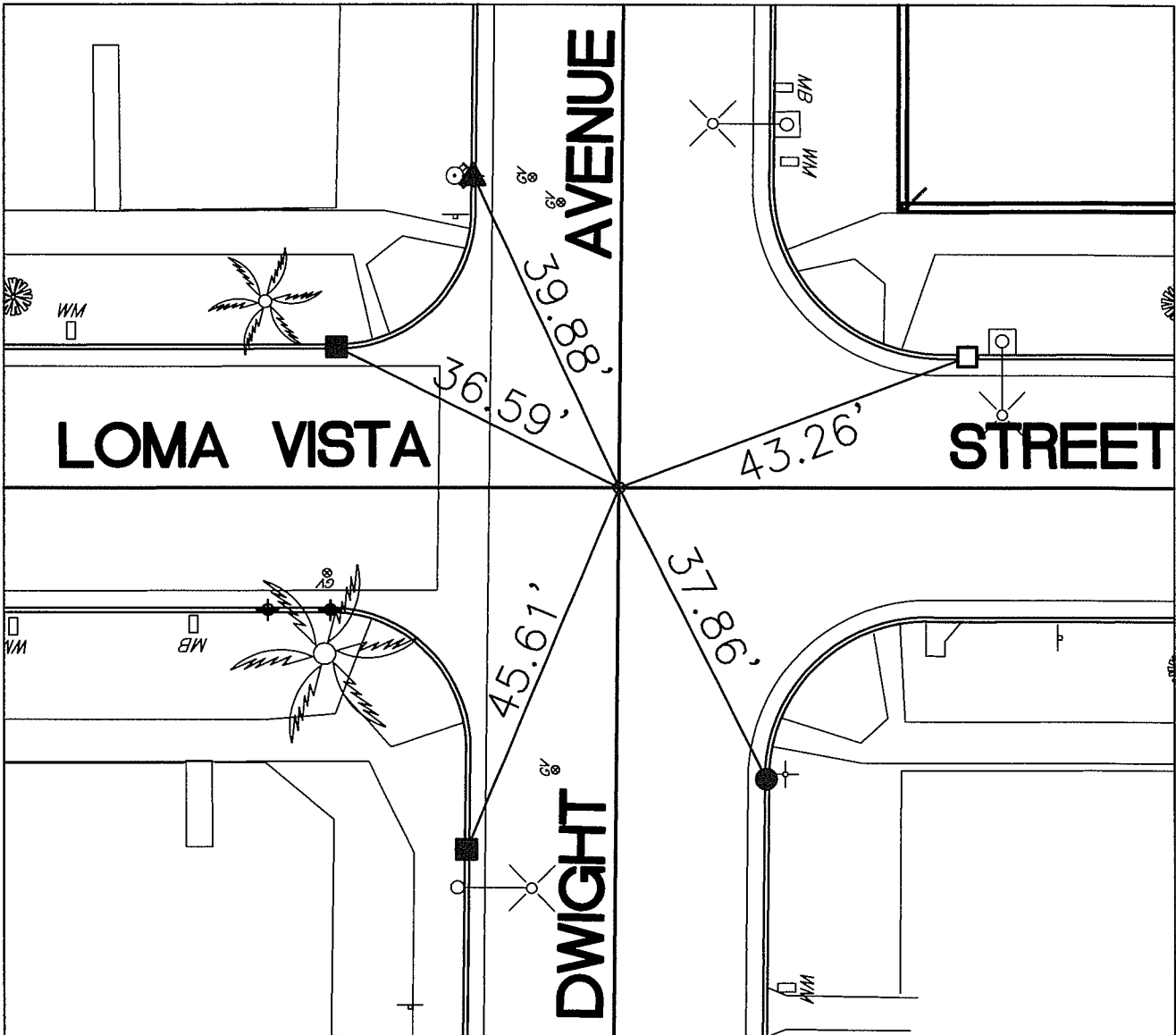


# SWING TIES

14759.T1E

STREET: DWIGHT AVENUE

OFFICIAL USE ONLY  
X-STREET: LOMA VISTA STREET



- ▲ — FOUND SPIKE AND LEAD IN T.C.
- — FOUND CHISELED 'X' IN T.C.
- — FOUND RAMSET NAIL IN T.C.
- — SET MAG NAIL IN T.C.
- ⊙ — FOUND RAILROAD SPIKE WITH PUNCH, DN. 0.10'

SCALE: 1"=20'  
 DATE: JANUARY 18, 2018  
 DRAWN BY: JDF  
 F.B.:  
 SEC: 24 T.2S., R.5W

## OFFICIAL TIE PLAT CITY OF RIVERSIDE

THESE TIES ARE FOR THE PURPOSE OF PERPETUATING THE FOUND MONUMENTATION. NO CLAIM IS MADE AS THE RELATIONSHIP OF THE POINTS OR LINES SHOWN HEREON TO TRUE BOUNDARY LOCATIONS



SHEET 1 OF 1