

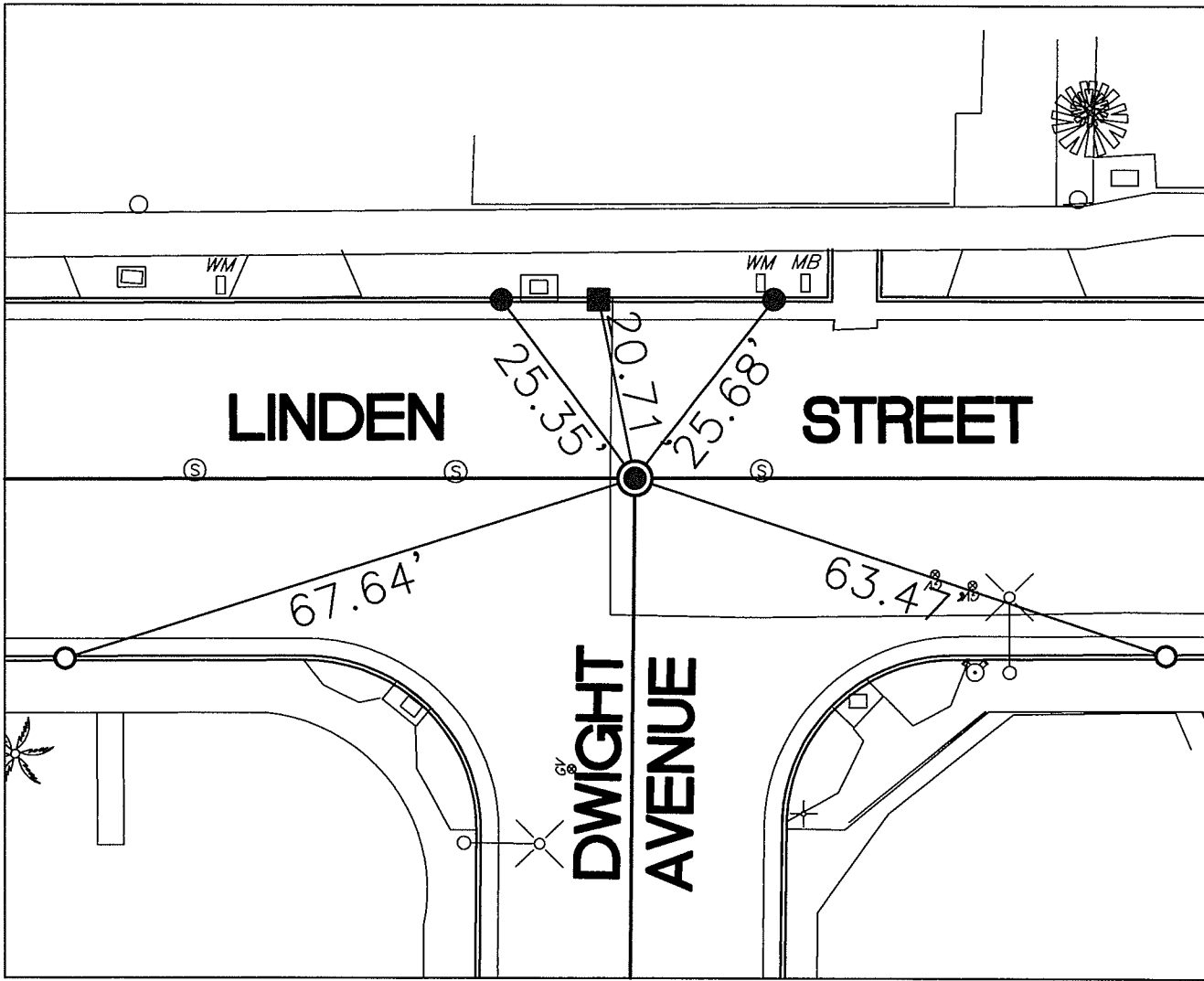
# SWING TIES

14160.TIF

STREET: DWIGHT AVENUE

OFFICIAL USE ONLY

X-STREET: LINDEN STREET



- — FOUND SPIKE AND LEAD IN T.C.
- — FOUND LEAD AND TACK IN T.C.
- — SET CTT IN T.C.
- ⊙ — FOUND PK NAIL AND WASHER STAMPED "RIVERSIDE CITY ENGINEER"

SCALE: 1"=20'

DATE: JANUARY 18, 2018

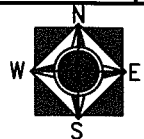
DRAWN BY: JDF

F.B.:

SEC: 24 T.2S., R.5W

## OFFICIAL TIE PLAT CITY OF RIVERSIDE

THESE TIES ARE FOR THE PURPOSE OF PERPETUATING THE FOUND MONUMENTATION. NO CLAIM IS MADE AS THE RELATIONSHIP OF THE POINTS OR LINES SHOWN HEREON TO TRUE BOUNDARY LOCATIONS



SHEET 1 OF 1