

14770.T1E

Street:

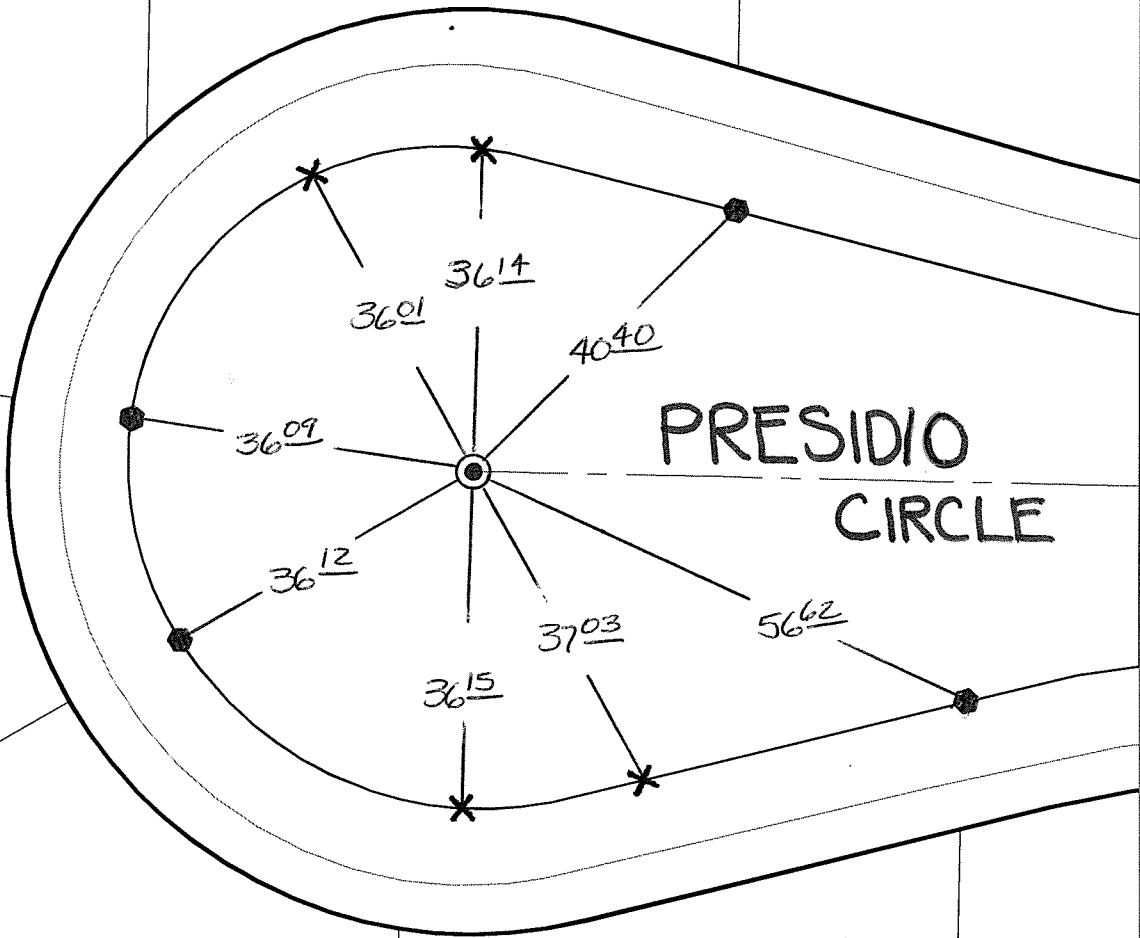
PRESIDIO CIRCLE

OFFICIAL USE ONLY

X-Street:

CUL-DE-SAC

SWING TIES



● FD. 1" I.P. W/RCE9876
TAG FLUSH REPLACED
W/GEAR SPK & LS 8294
TAG FLUSH

● FD. RCE9876 TAG ON T/C

- × FD. Ramset Nail on T/C
- FD. LD. & TK. on T/C
- FD. "C" Nail on T/C
- Set LD. & TK. on T/C

P.K. and City Engineer tag to be set @
surface after street construction is
complete. (If possible)

Scale: 1" = 20'
Date: 12/24/12
Drawn by: pw
F.B.:
TR-Sec: T2SR6W-35

OFFICIAL TIE PLAT
CITY OF RIVERSIDE

*These ties are for the purpose of perpetuating the found
monumentation. No claim is made as to the relationship of
the points or lines shown hereon to true boundary locations.*

Sheet 1 of 1
Cadme MB: 49-2