

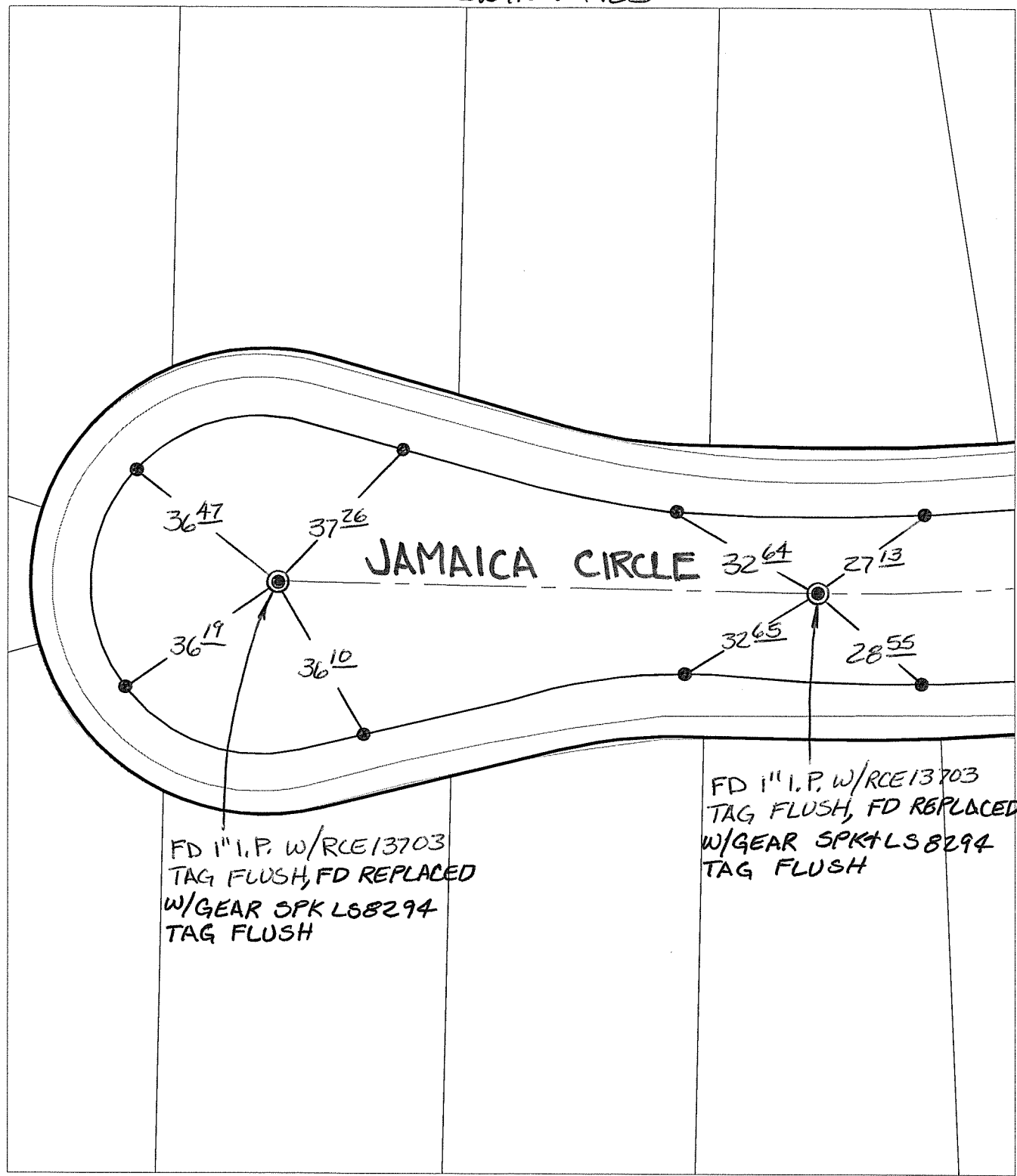
14772.TIF

Street: JAMAICA CIRCLE

X-Street: OFFICIAL USE ONLY

CUL-DE-SAC

SWING TIES



FD 1" I.P. w/RCE13703
TAG FLUSH, FD REPLACED
w/GEAR SPK L58294
TAG FLUSH

FD 1" I.P. w/RCE13703
TAG FLUSH, FD REPLACED
w/GEAR SPK L58294
TAG FLUSH


- × FD. Ramset Nail on T/C
- FD. LD. & TK. on T/C
- FD. "C" Nail on T/C
- Set LD. & TK. on T/C

P.K. and City Engineer tag to be set @
surface after street construction is
complete. (If possible)

Scale: 1" = 30'
Date: 12/24/12
Drawn by: pw
F.B.:
TR-Sec: T2SR6W-35

OFFICIAL TIE PLAT
CITY OF RIVERSIDE

*These ties are for the purpose of perpetuating the found
monumentation. No claim is made as to the relationship of
the points or lines shown hereon to true boundary locations.*



Sheet 1 of 1
Cadme MB: 49-2