

14793.TIF

Street:

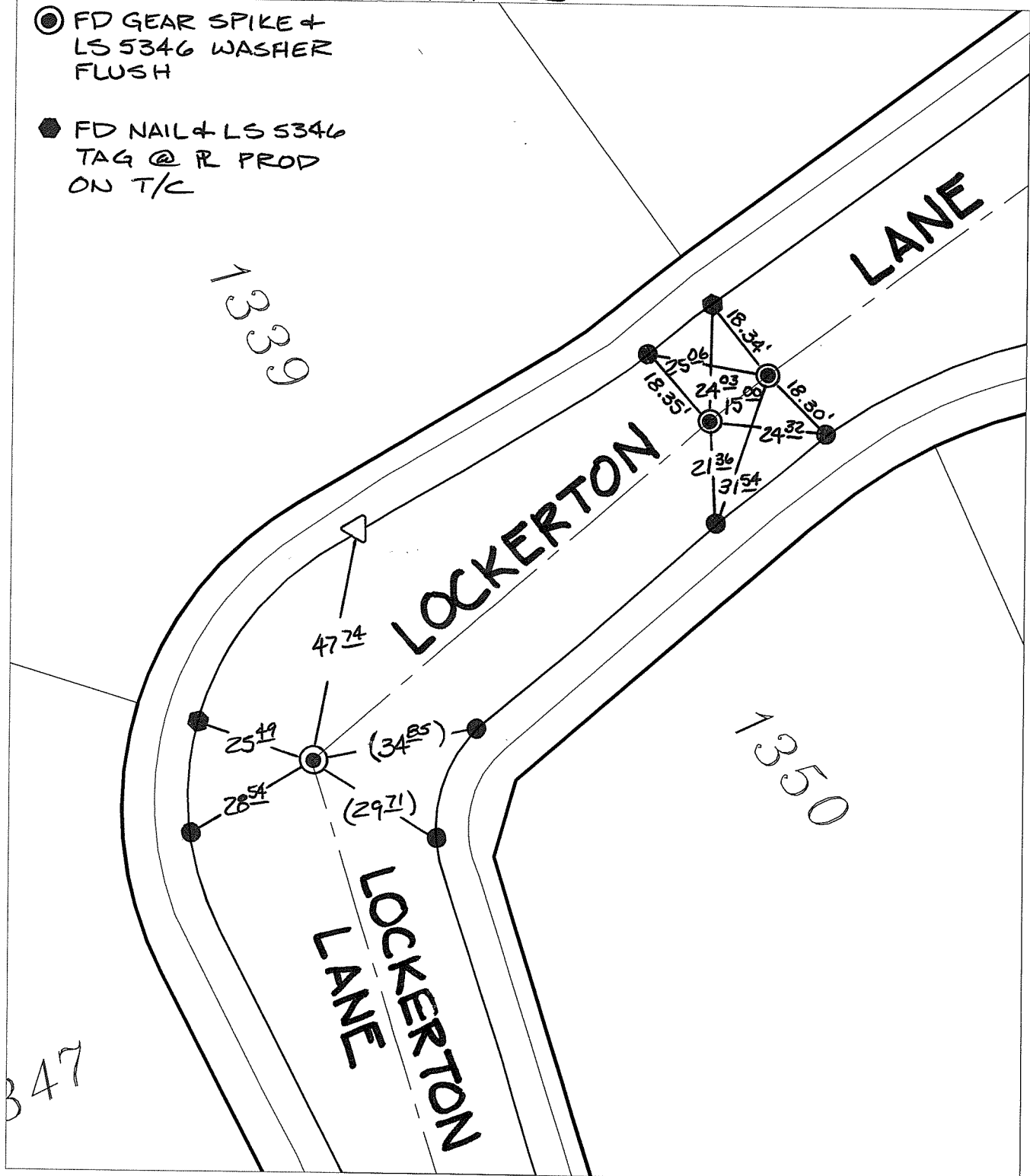
LOCKERTON LANE

X-Street:  
OFFICIAL USE ONLY

KNUCKLE

SWING TIES

- FD GEAR SPIKE + LS 5346 WASHER FLUSH
- ◆ FD NAIL + LS 5346 TAG @ R PROD ON T/C




- × FD. Ramset Nail on T/C
  - FD. LD. & TK. on T/C
  - FD. "C" Nail on T/C
  - Set LD. & TK. on T/C
- P.K. and City Engineer tag to be set @ surface after street construction is complete. (If possible)

Scale: 1" = 30'  
 Date: 05/14/16  
 Drawn by: pw  
 F.B.:  
 TR-Sec: T2SR4W-33

**OFFICIAL TIE PLAT**  
**CITY OF RIVERSIDE**

*These ties are for the purpose of perpetuating the found monumentation. No claim is made as to the relationship of the points or lines shown hereon to true boundary locations.*



Sheet 1 of 1  
 Cadme MB: 58-3