

14794.TIF

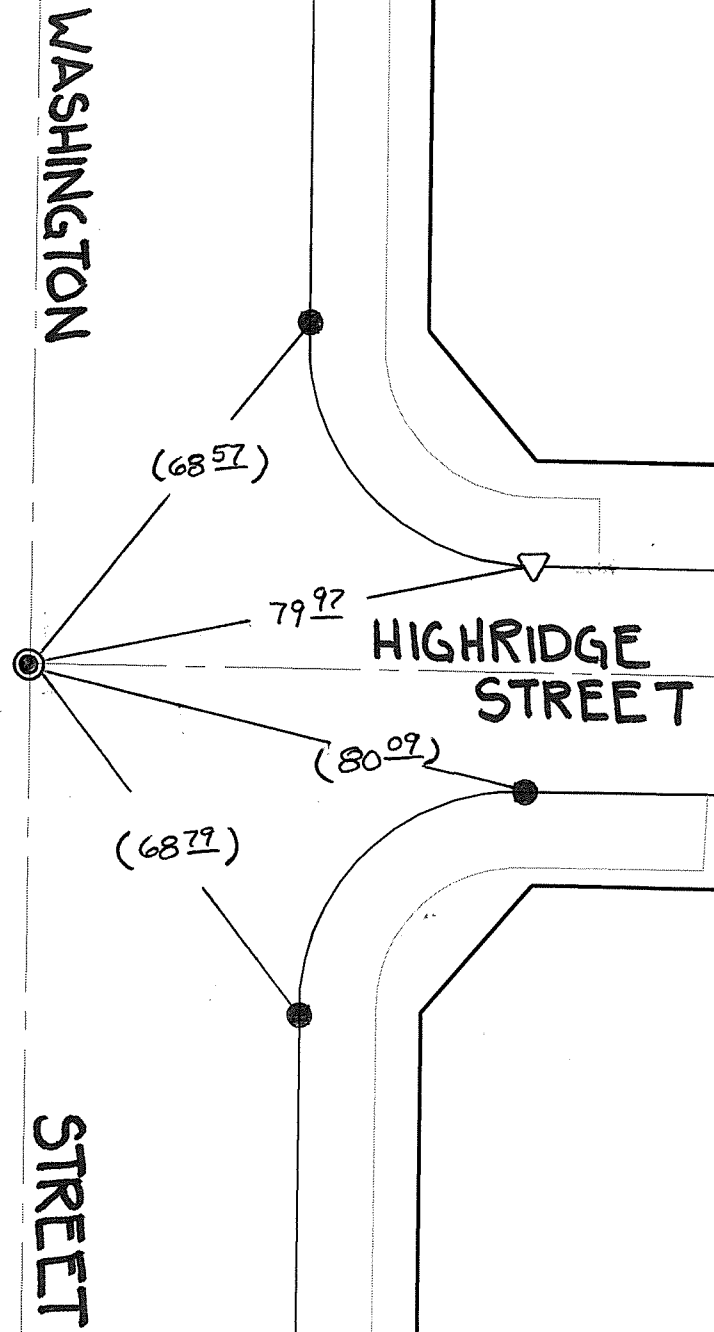
Street: WASHINGTON STREET X-Street: HIGHRIDGE STREET
OFFICIAL USE ONLY

SWING TIES

HISTORICAL

-8949.TIF

FD. 1" I.P. W/RCE
21740 FLUSH



() RECORD DISTANCE PER. CITY TIE SHT 8949.TIF
△ SET "C" + CITY TIE TAG ON T/C

- × FD. Ramset Nail on T/C ● FD. LD. & TK. on T/C
- FD. "C" Nail on T/C ○ Set LD. & TK. on T/C

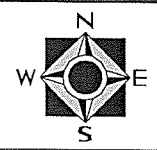
P.K. and City Engineer tag to be set @ surface after street construction is complete. (If possible)

Scale: 1" = 30'
 Date: 02/10/11
 Drawn by: pw
 F.B.:
 TR-Sec: T3SR5W-14

OFFICIAL TIE PLAT

CITY OF RIVERSIDE

These ties are for the purpose of perpetuating the found monumentation. No claim is made as to the relationship of the points or lines shown hereon to true boundary locations.



Sheet 1 of 1
 Cadme MB: 84-3