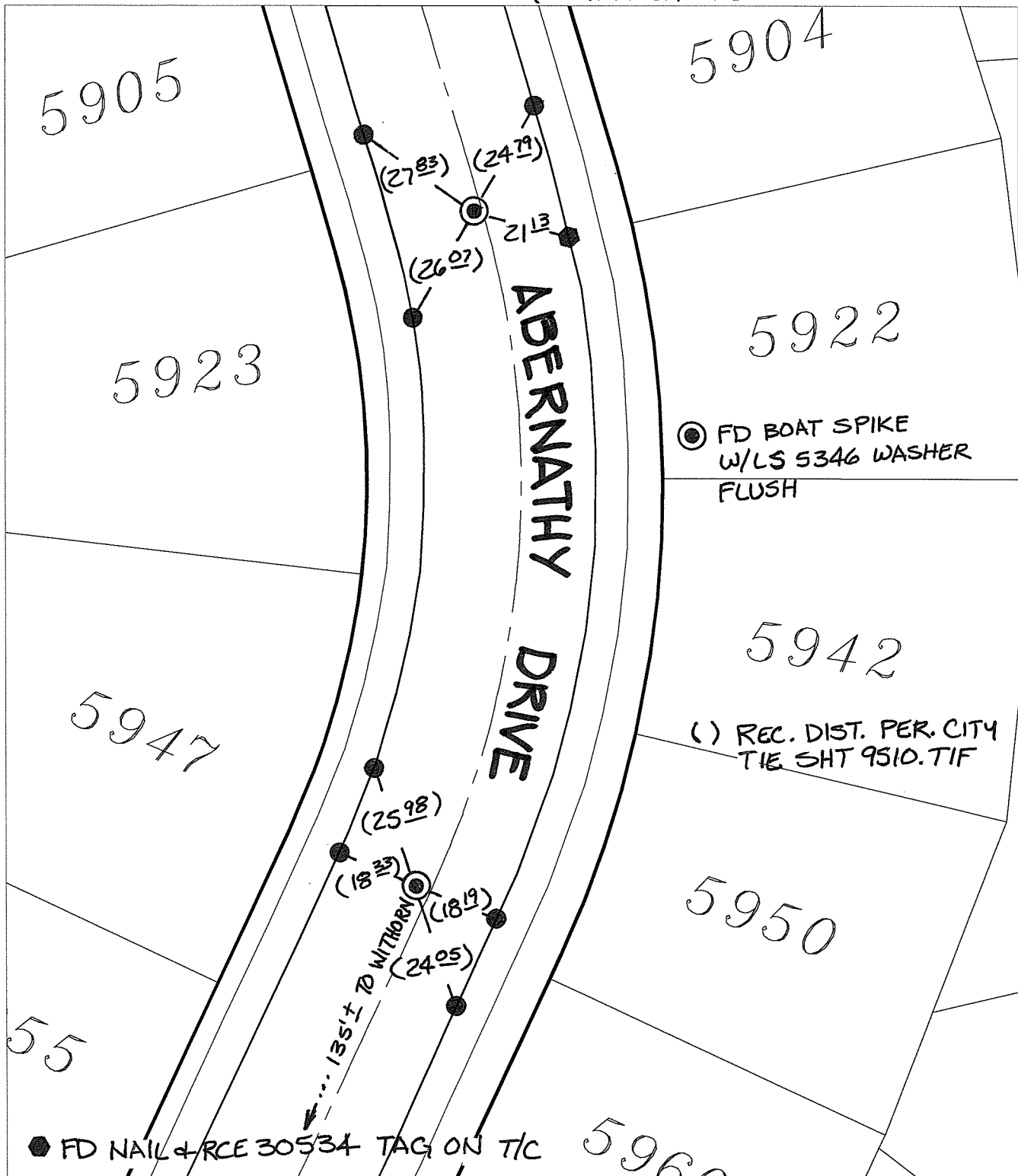


14198.TIF

Street: ABERNATHY DRIVE BC & EC X-Street: NORTH OF WITHORN CT.  
OFFICIAL USE ONLY

SWING & TRANSIT TIES



● FD BOAT SPIKE W/LS 5346 WASHER FLUSH

( ) REC. DIST. PER. CITY TIE SHT 9510.TIF

● FD NAIL & RCE 30534 TAG ON T/C

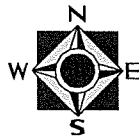
- × FD. Ramset Nail on T/C
- FD. LD. & TK. on T/C
- FD. "C" Nail on T/C
- Set LD. & TK. on T/C

P.K. and City Engineer tag to be set @ surface after street construction is complete. (If possible)

Scale: 1" = 30'  
 Date: 06/09/16  
 Drawn by: pw  
 F.B.: I  
 TR-Sec: T3SR4W-4

**OFFICIAL TIE PLAT**  
**CITY OF RIVERSIDE**

*These ties are for the purpose of perpetuating the found monumentation. No claim is made as to the relationship of the points or lines shown hereon to true boundary locations.*



Sheet 1 of 1  
 Cadme MB: 58-5