

14799.TIF

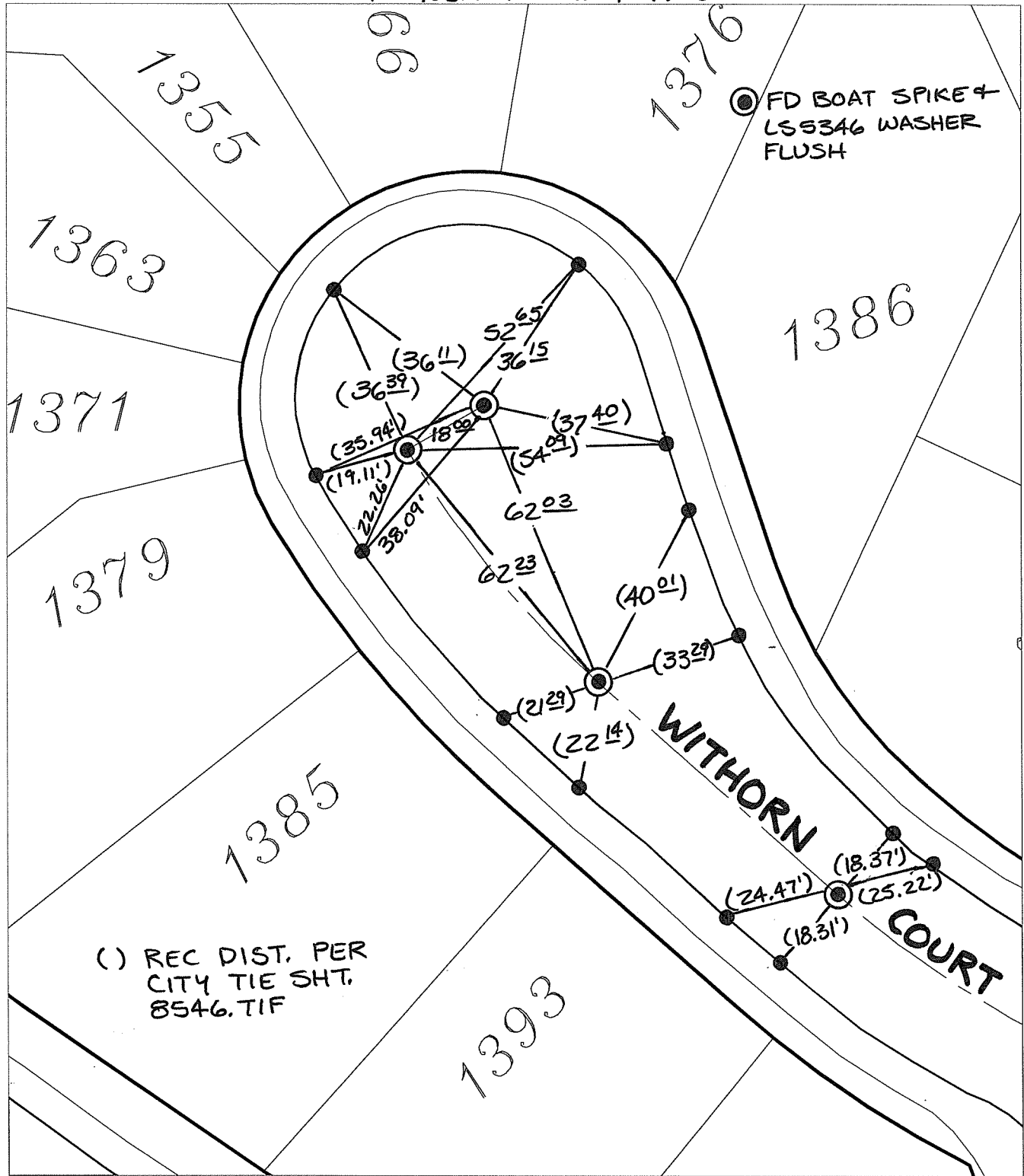
Street:

WITHORN COURT

X-Street:
OFFICIAL USE ONLY

CUL-DE-SAC

TRANSIT & SWING TIES



() REC DIST. PER CITY TIE SHT. 8546.TIF

FD BOAT SPIKE + LSS346 WASHER FLUSH

- × FD. Ramset Nail on T/C
 - FD. LD. & TK. on T/C
 - FD. "C" Nail on T/C
 - Set LD. & TK. on T/C
- P.K. and City Engineer tag to be set @ surface after street construction is complete. (If possible)

Scale: 1" = 30'
 Date: 06/09/16
 Drawn by: pw
 F.B.: I
 TR-Sec: T3SR4W-4

OFFICIAL TIE PLAT
CITY OF RIVERSIDE

These ties are for the purpose of perpetuating the found monumentation. No claim is made as to the relationship of the points or lines shown hereon to true boundary locations.

Sheet 1 of 1
 Cadme MB: 58-5