

Street:

ABERNATHY DRIVE

X-Street:  
OFFICIAL USE ONLY

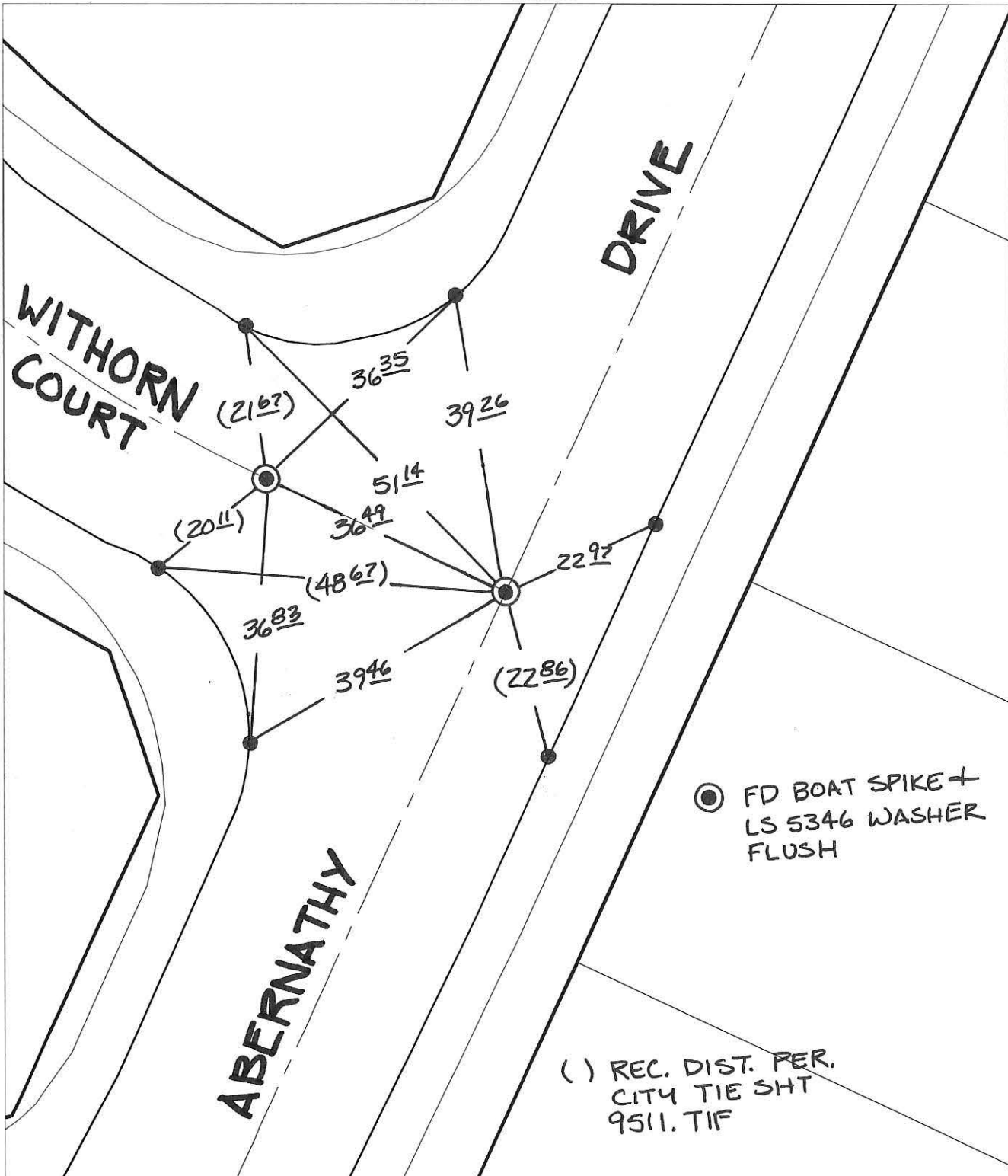
WITHORN COURT

SWING TIES

DRIVE

WITHORN COURT

ABERNATHY



● FD BOAT SPIKE +  
LS 5346 WASHER  
FLUSH

( ) REC. DIST. PER.  
CITY TIE SHT  
9511. TIF

- × FD. Ramset Nail on T/C      ● FD. LD. & TK. on T/C
- FD. "C" Nail on T/C      ○ Set LD. & TK. on T/C

P.K. and City Engineer tag to be set @  
surface after street construction is  
complete. (If possible)

Scale: 1" = 20'

Date: 06/09/16

Drawn by: pw

F.B.: I

TR-Sec: T3SR4W-4

## OFFICIAL TIE PLAT CITY OF RIVERSIDE

*These ties are for the purpose of perpetuating the found  
monumentation. No claim is made as to the relationship of  
the points or lines shown hereon to true boundary locations.*



Sheet 1 of 1

Cadme MB: 58-5