

14B03.TIF

Street:

FAIR ISLE DRIVE

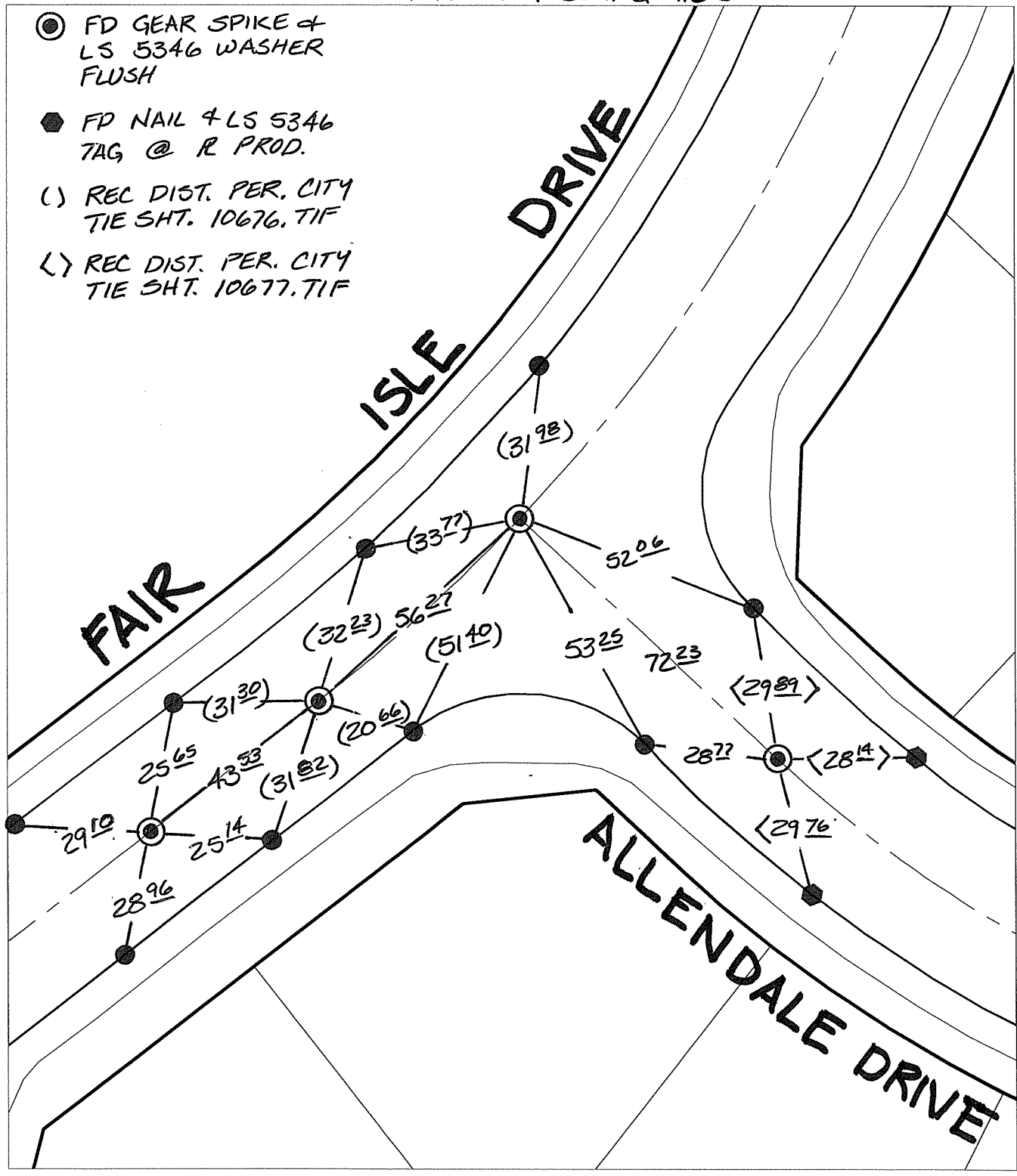
X-Street:

ALLENDALE DRIVE

OFFICIAL USE ONLY

TRANSIT & SWING TIES

- ⊙ FD GEAR SPIKE & LS 5346 WASHER FLUSH
- FD NAIL & LS 5346 TAG @ R PROD.
- ( ) REC DIST. PER. CITY TIE SHT. 10676.TIF
- < > REC DIST. PER. CITY TIE SHT. 10677.TIF



× FD. Ramset Nail on T/C    ● FD. LD. & TK. on T/C    P.K. and City Engineer tag to be set @ surface after street construction is complete. (If possible)  
 ■ FD. "C" Nail on T/C    ○ Set LD. & TK. on T/C

Scale: 1" = 30'  
 Date: 04/08/16  
 Drawn by: pw  
 F.B.:  
 TR-Sec: T3SR4W-4

**OFFICIAL TIE PLAT**  
**CITY OF RIVERSIDE**  
*These ties are for the purpose of perpetuating the found monumentation. No claim is made as to the relationship of the points or lines shown hereon to true boundary locations.*

Sheet 1 of 1  
 Cadme MB: 58-5