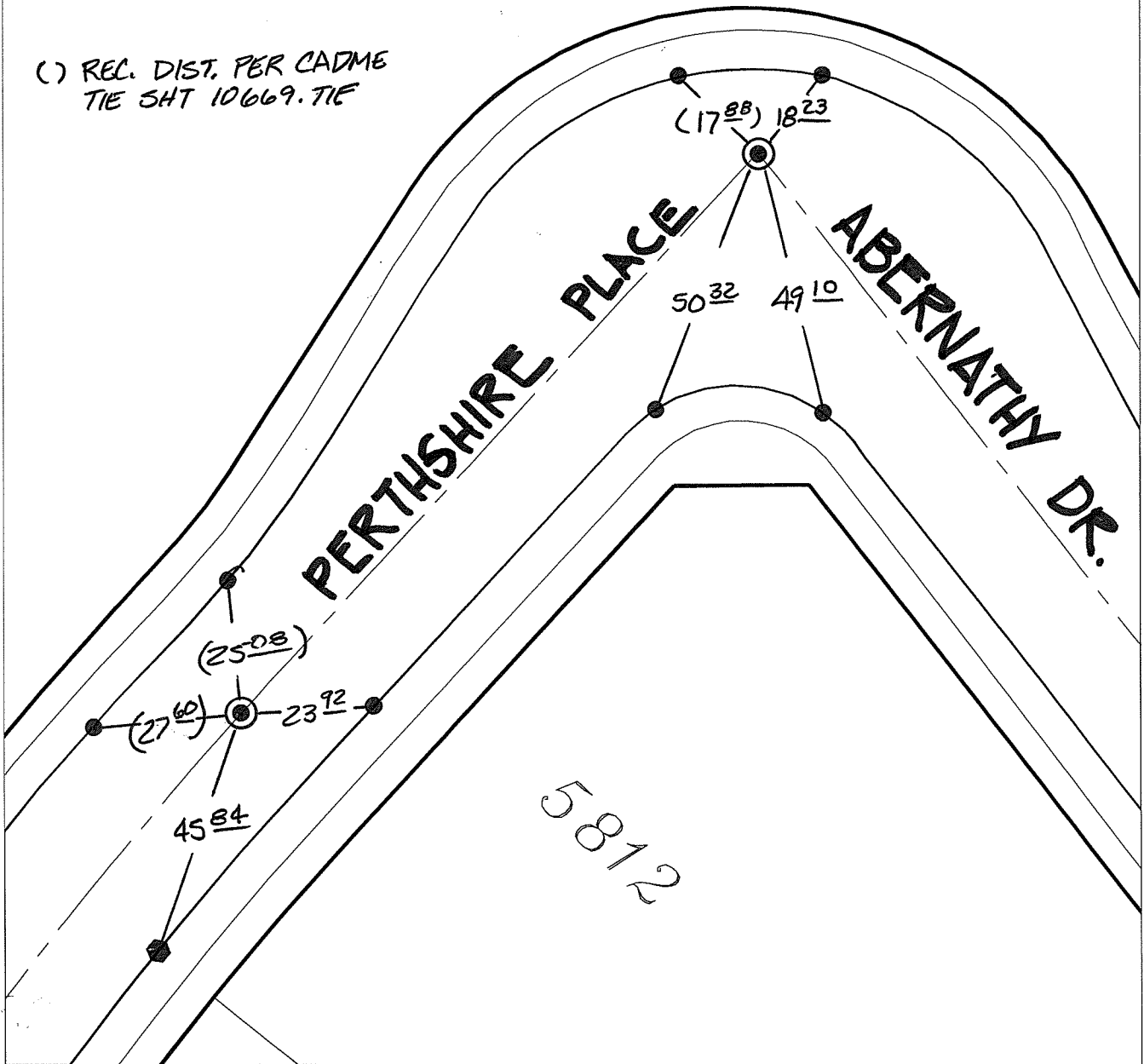


SWING TIES

⊙ FD GEAR SPIKE &  
LG 5346 WASHER  
FLUSH

( ) REC. DIST. PER CADME  
TIE SHT 10669.TIF



- ✕ FD. Ramset Nail on T/C    ● FD. LD. & TK. on T/C
- FD. "C" Nail on T/C      ○ Set LD. & TK. on T/C

P.K. and City Engineer tag to be set @  
surface after street construction is  
complete. (If possible)

14813.TIF  
Street:

ABERNATHY DRIVE

OFFICIAL USE ONLY

X-Street:

PERTHSHIRE PLACE

Scale: 1" = 30'  
Date: 02/24/16  
Drawn by: pw  
F.B.:  
TR-Sec: T3SR4W-4

**OFFICIAL TIE PLAT**  
CITY OF RIVERSIDE

*These ties are for the purpose of perpetuating the found  
monumentation. No claim is made as to the relationship of  
the points or lines shown hereon to true boundary locations.*



Sheet 1 of 1  
Cadme MB: 58-5