

14815.T1E

Street:

SPEYSIDE ROAD

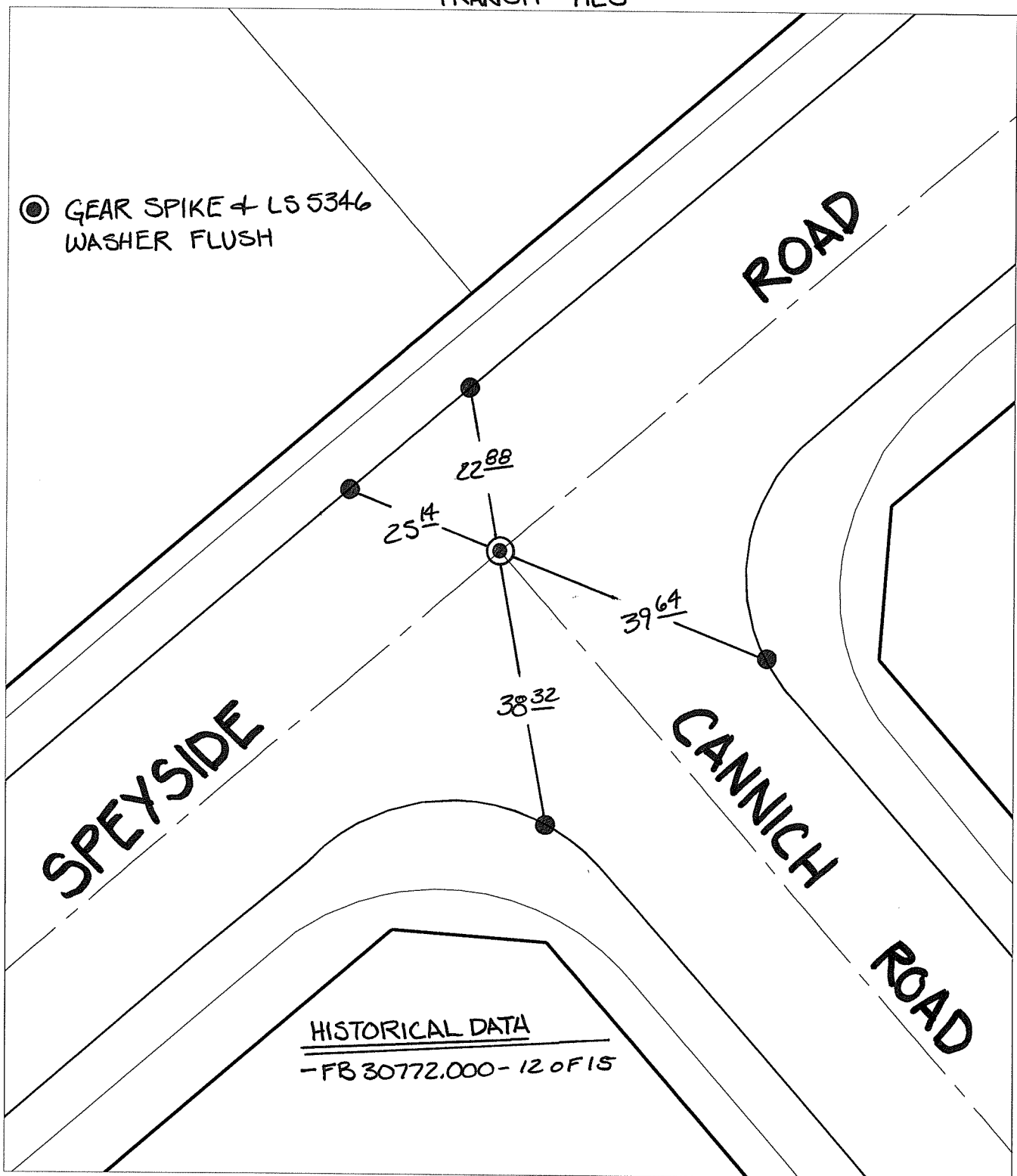
X-Street:

CANNICH ROAD

OFFICIAL USE ONLY

TRANSIT TIES

⊙ GEAR SPIKE + LS 5346  
WASHER FLUSH



HISTORICAL DATA  
- FB 30772.000 - 12 OF 15


- ✕ FD. Ramset Nail on T/C    ● FD. LD. & TK. on T/C
- FD. "C" Nail on T/C    ○ Set LD. & TK. on T/C

P.K. and City Engineer tag to be set @  
surface after street construction is  
complete. (If possible)

Scale: 1" = 20'  
 Date: 02/16/16  
 Drawn by: pw  
 F.B.:  
 TR-Sec: T3SR4W-4

**OFFICIAL TIE PLAT**  
**CITY OF RIVERSIDE**

*These ties are for the purpose of perpetuating the found  
 monumentation. No claim is made as to the relationship of  
 the points or lines shown hereon to true boundary locations.*



Sheet 1 of 1  
 Cadme MB: 57-6