

14816.TIF

Street: MISSION GROVE PARKWAY N. X-Street C S. OF LAKEWOOD DRIVE

OFFICIAL USE ONLY

6802

6818

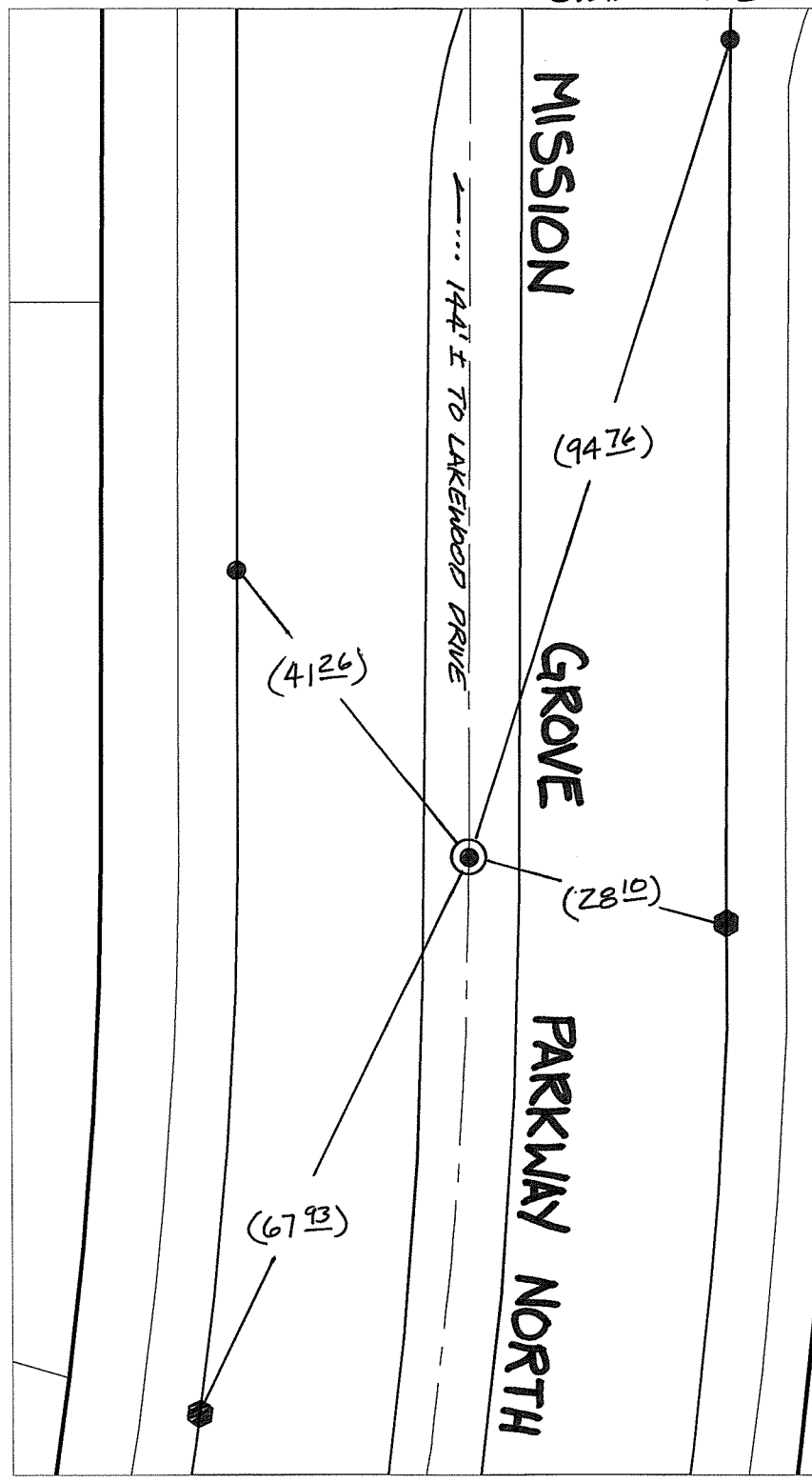
SWING TIES

MISSION

GROVE

PARKWAY NORTH

144' E TO LAKEWOOD DRIVE



● FD RCE 31574 TAG ON CONCRETE MEDIAN @ E.C.

(L) REC DISTANCE PER. CITY TIE SH. 5731.TIF

● FD RCE 31574 TAG ON T/C @ R. PROD

- × FD. Ramset Nail on T/C
- FD. LD. & TK. on T/C
- FD. "C" Nail on T/C
- Set LD. & TK. on T/C

P.K. and City Engineer tag to be set @ surface after street construction is complete. (If possible)

Scale: 1" = 20'

Date: 11/24/16

Drawn by: pw

F.B.:

TR-Sec: T3SR4W-8

OFFICIAL TIE PLAT
CITY OF RIVERSIDE

These ties are for the purpose of perpetuating the found monumentation. No claim is made as to the relationship of the points or lines shown hereon to true boundary locations.

Sheet 1 of 1

Cadme MB: 72-3