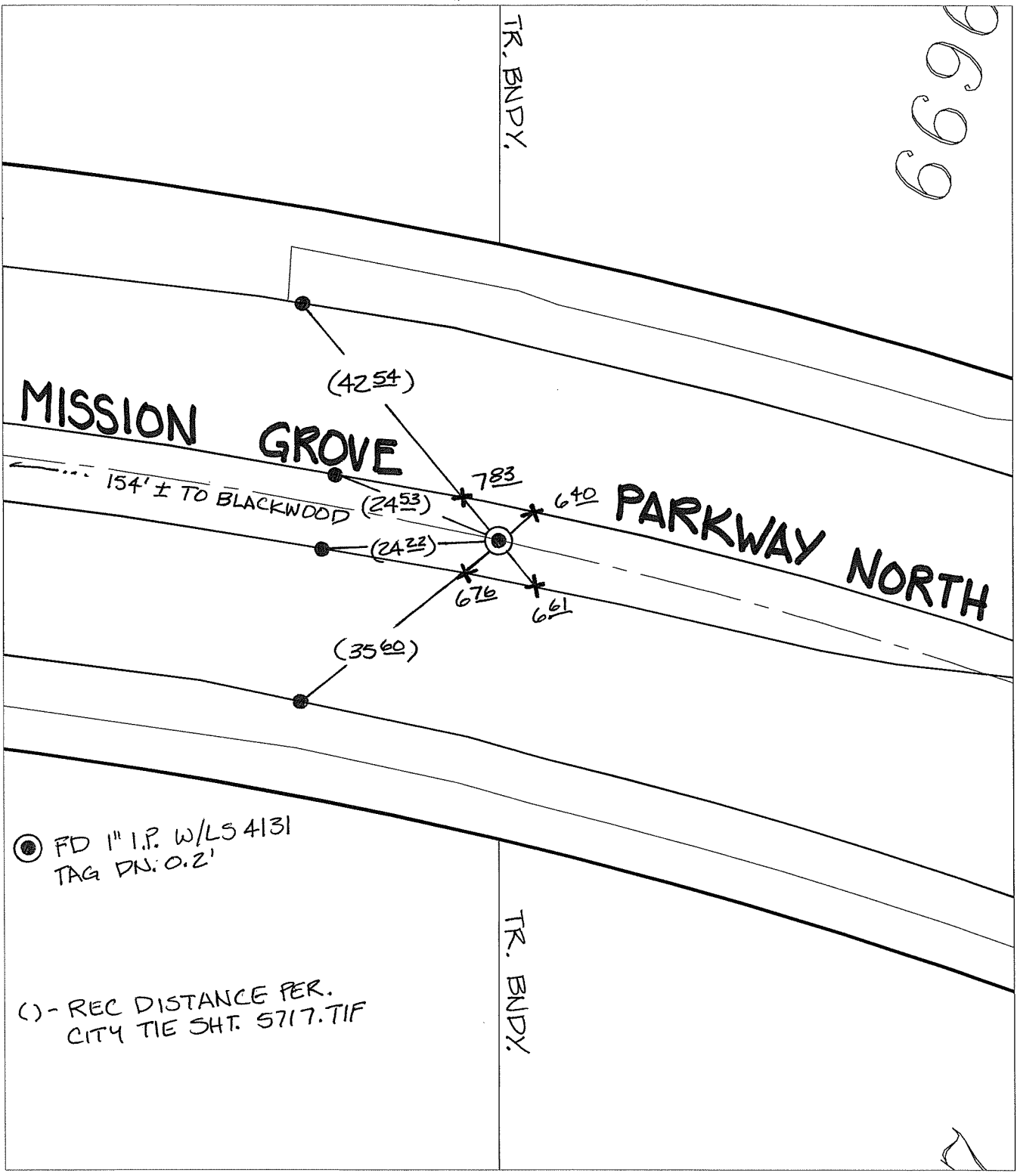


14819.TIF

Street: MISSION GROVE PARKWAY N. X-Street R BNDY E. OF BLACKWOOD

OFFICIAL USE ONLY

TRANSIT & SWING TIES



● FD 1" I.P. w/LS 4131
TAG DN: 0.2'

() - REC DISTANCE PER.
CITY TIE SH. 5717.TIF

- ✕ FD. Ramset Nail on T/C
- FD. LD. & TK. on T/C
- FD. "C" Nail on T/C
- Set LD. & TK. on T/C

P.K. and City Engineer tag to be set @
surface after street construction is
complete. (If possible)

Scale: 1" = 20'

Date: 11/21/16


Drawn by: pw

F.B.:

TR-Sec: T3SR4W-8

OFFICIAL TIE PLAT
CITY OF RIVERSIDE

*These ties are for the purpose of perpetuating the found
monumentation. No claim is made as to the relationship of
the points or lines shown hereon to true boundary locations.*



Sheet 1 of 1
Cadme MB: 72-3