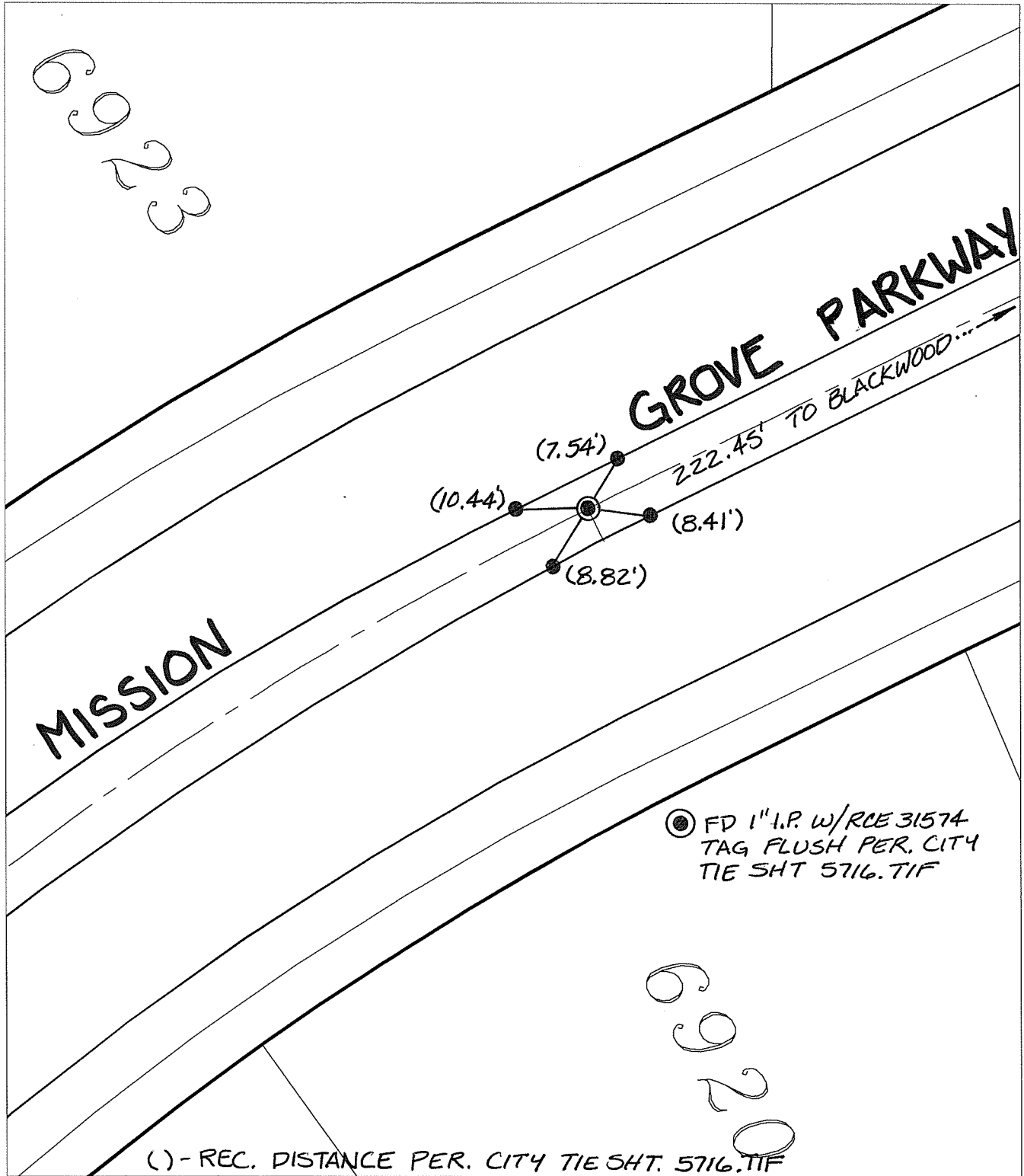


SWING TIES

6923



● FD 1" I.P. W/RCE 31574
TAG FLUSH PER. CITY
TIE SHT 5716.TIF

- ✕ FD. Ramset Nail on T/C
- FD. LD. & TK. on T/C
- FD. "C" Nail on T/C
- Set LD. & TK. on T/C

P.K. and City Engineer tag to be set @
surface after street construction is
complete. (If possible)

Scale: 1" = 20'
Date: 10/26/16
Drawn by: pw
F.B.:
TR-Sec: T3SR4W-8

OFFICIAL TIE PLAT

CITY OF RIVERSIDE

*These ties are for the purpose of perpetuating the found
monumentation. No claim is made as to the relationship of
the points or lines shown hereon to true boundary locations.*



Sheet 1 of 1
Cadme MB: 72-5

Street: MISSION GROVE PARKWAY X-Street SW OF BLACKWOOD ST.
 OFFICIAL USE ONLY

14824.TIF