

TRANSIT TIES

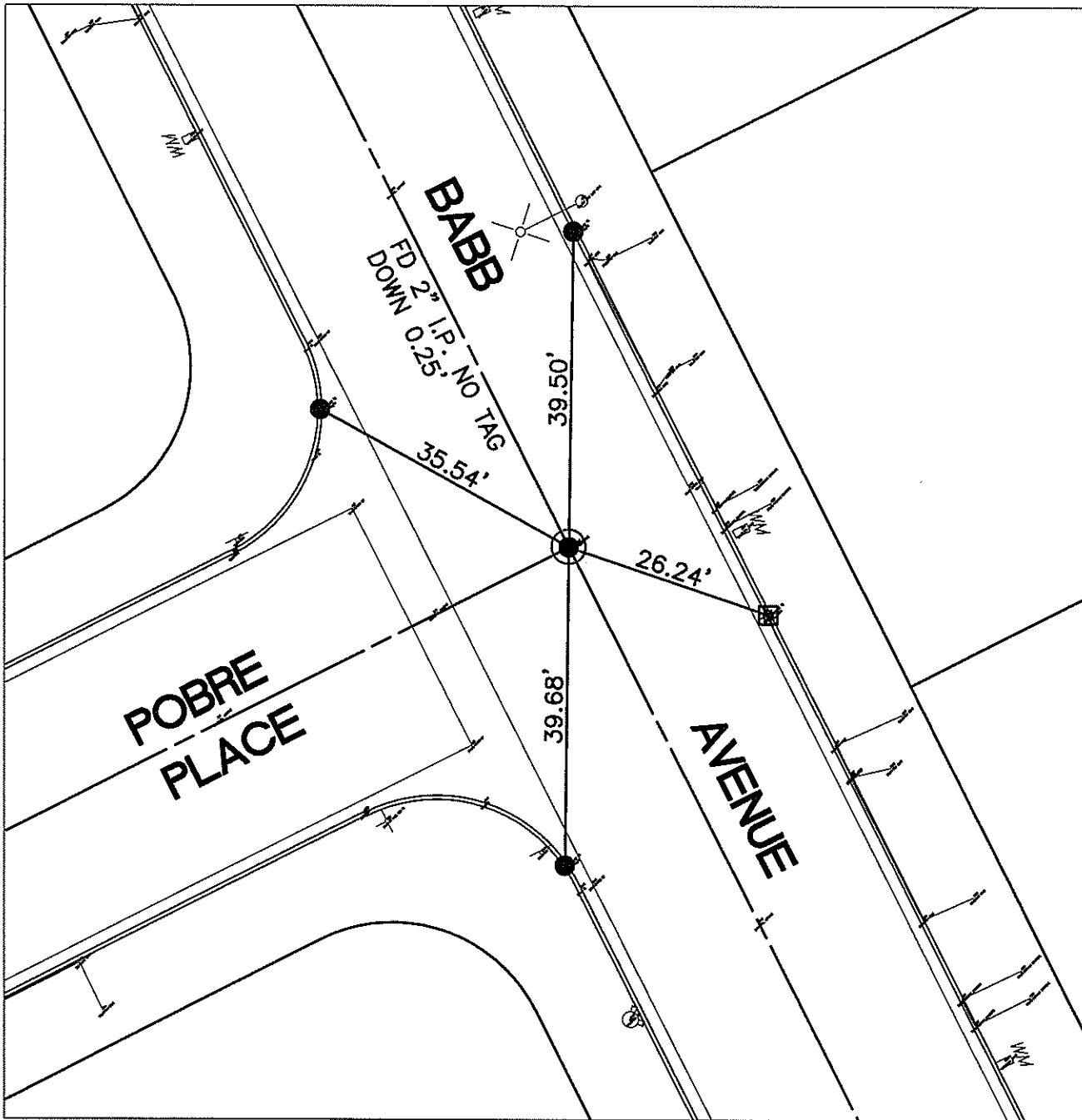
REF: CRFB 738/69

14829TIF

STREET: BABB AVENUE

OFFICIAL USE ONLY

X-STREET: POBRE PLACE



- - FOUND LEAD & TACK IN T.C.
- - SET PK NAIL IN T.C.

SCALE: 1"=20'

DATE: NOVEMBER 21, 2016

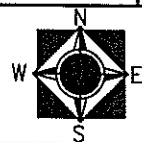
DRAWN BY: CURT

F.B.:

SEC: 1 T.3S., R.6W.

OFFICIAL TIE PLAT CITY OF RIVERSIDE

THESE TIES ARE FOR THE PURPOSE OF PERPETUATING THE FOUND MONUMENTATION. NO CLAIM IS MADE AS THE RELATIONSHIP OF THE POINTS OR LINES SHOWN HEREON TO TRUE BOUNDARY LOCATIONS



SHEET 1 OF 1