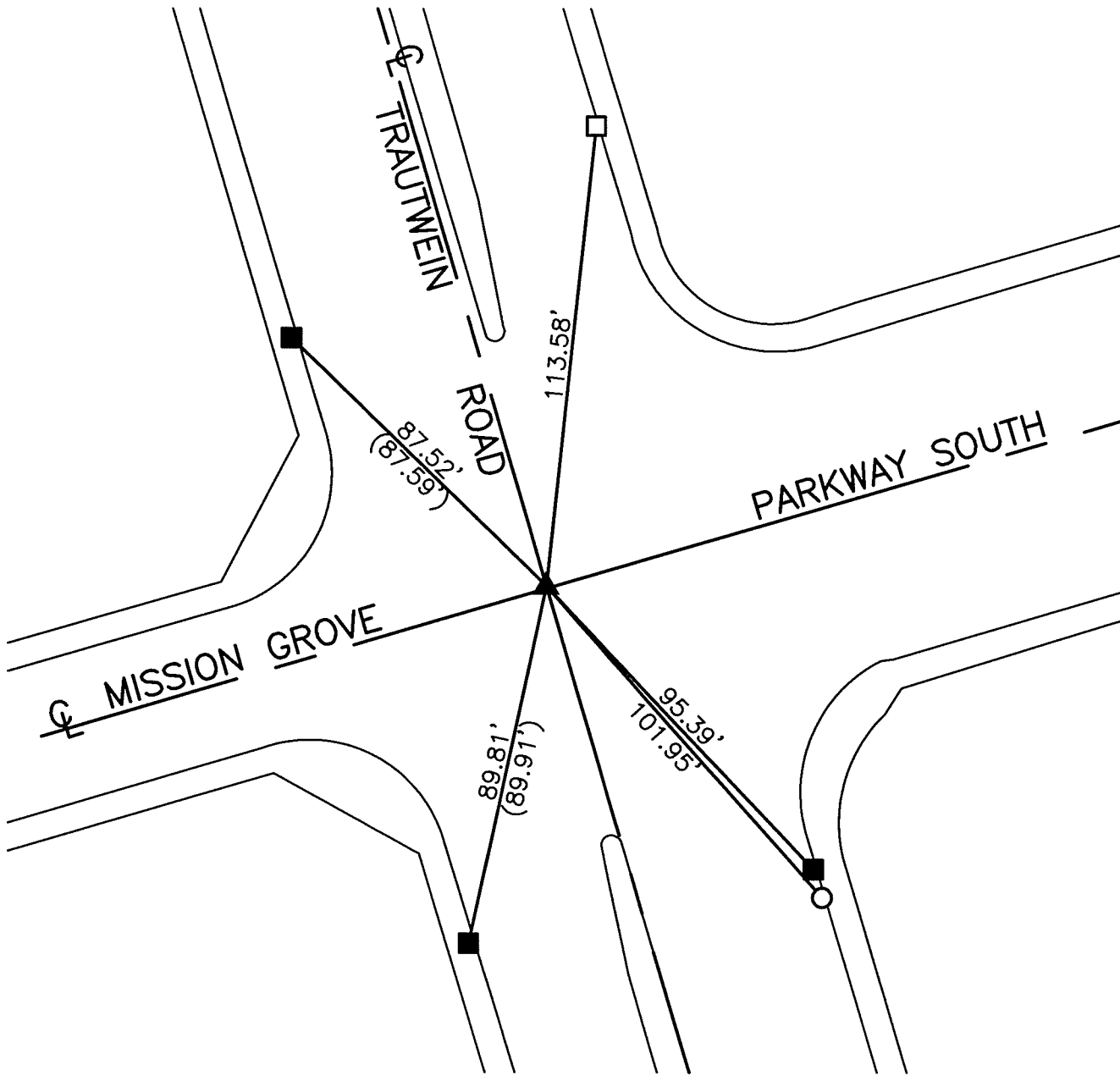


SWING TIES

REF: (XX.XX) INDICATES RECORD DISTANCE PER 9401.TIF



14837.TIF

STREET: TRAUTWEIN ROAD

OFFICIAL USE ONLY

X-STREET: MISSION GROVE

PARKWAY SOUTH

- - SET PK NAIL IN TC
- - SET NAIL AND CITY TIE TAG
- - FOUND RAMSET NAIL IN T.C.
- ▲ - FOUND 1" I.P., WITH PLUG, ILLEGIBLE, FLUSH, SET MAG NAIL AND WASHER STAMPED 'RIVERSIDE CITY SURVEYOR' AFTER CONSTRUCTION

SCALE: 1"=40'
DATE: 8/19/14
DRAWN BY: JDF
F.B.:
SEC: T.3S., R.4W SEC. 17

OFFICIAL TIE PLAT CITY OF RIVERSIDE

THESE TIES ARE FOR THE PURPOSE OF PERPETUATING THE FOUND MONUMENTATION. NO CLAIM IS MADE AS THE RELATIONSHIP OF THE POINTS OR LINES SHOWN HEREON TO TRUE BOUNDARY LOCATIONS

