

# SWING TIES

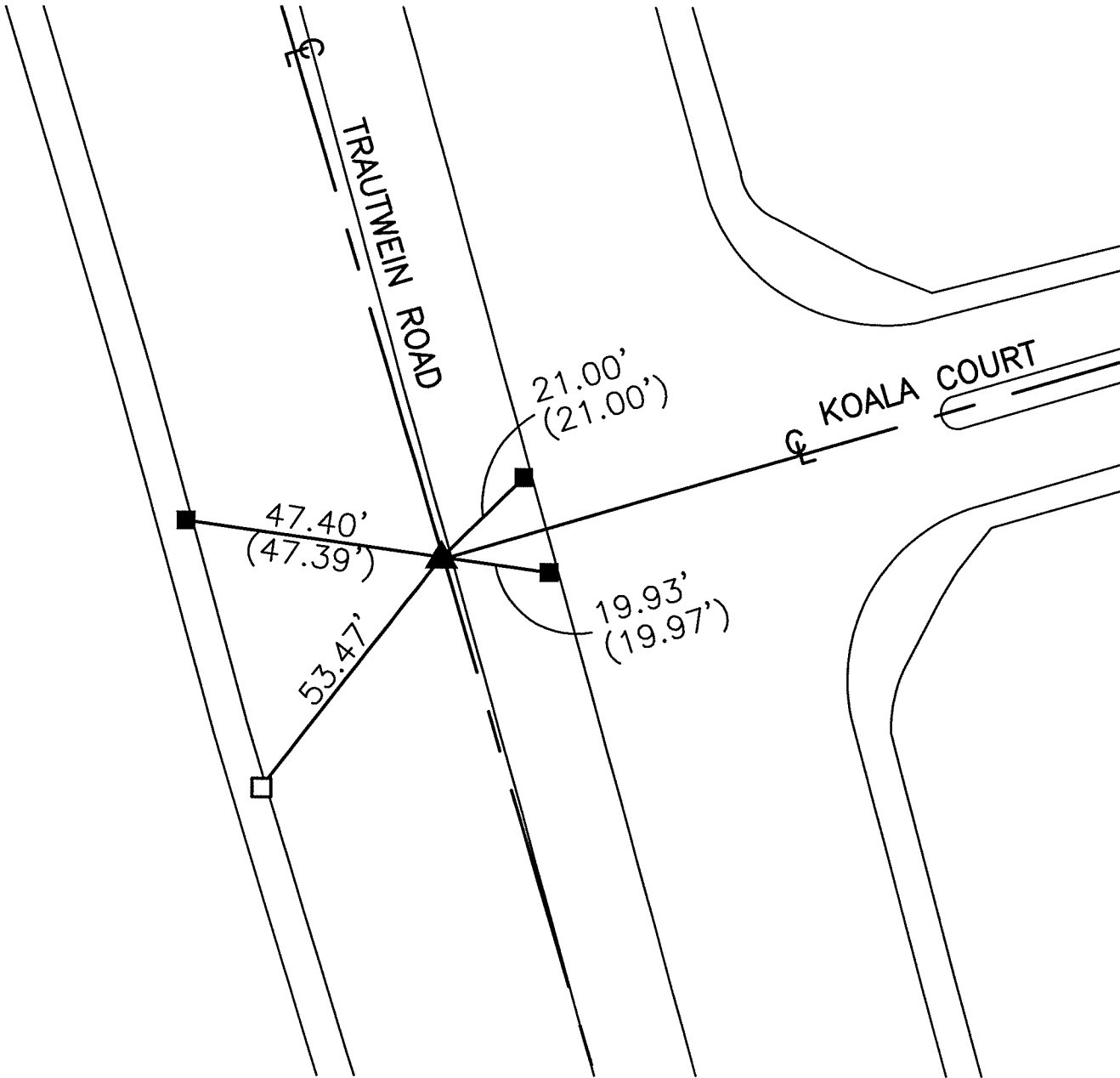
REF: (XX.XX) INDICATES RECORD DISTANCE PER 7841.TIF

14838.TIF

STREET: TRAUTWEIN ROAD

OFFICIAL USE ONLY

X-STREET: KOALA COURT



- - SET PK NAIL IN TC
- - FOUND LEAD AND TACK IN T.C.
- ▲ - FOUND 1" I.P., WITH PLUG, ILLEGIBLE, FLUSH, SET MAG NAIL AND WASHER STAMPED "RIVERSIDE CITY SURVEYOR" AFTER CONSTRUCTION

SCALE:	1"=30'
DATE:	8/19/14
DRAWN BY:	JDF
F.B.:	
SEC:	T.3S., R.4W SEC. 17

## OFFICIAL TIE PLAT CITY OF RIVERSIDE

THESE TIES ARE FOR THE PURPOSE OF PERPETUATING THE FOUND MONUMENTATION. NO CLAIM IS MADE AS THE RELATIONSHIP OF THE POINTS OR LINES SHOWN HEREON TO TRUE BOUNDARY LOCATIONS



SHEET 1 OF 1