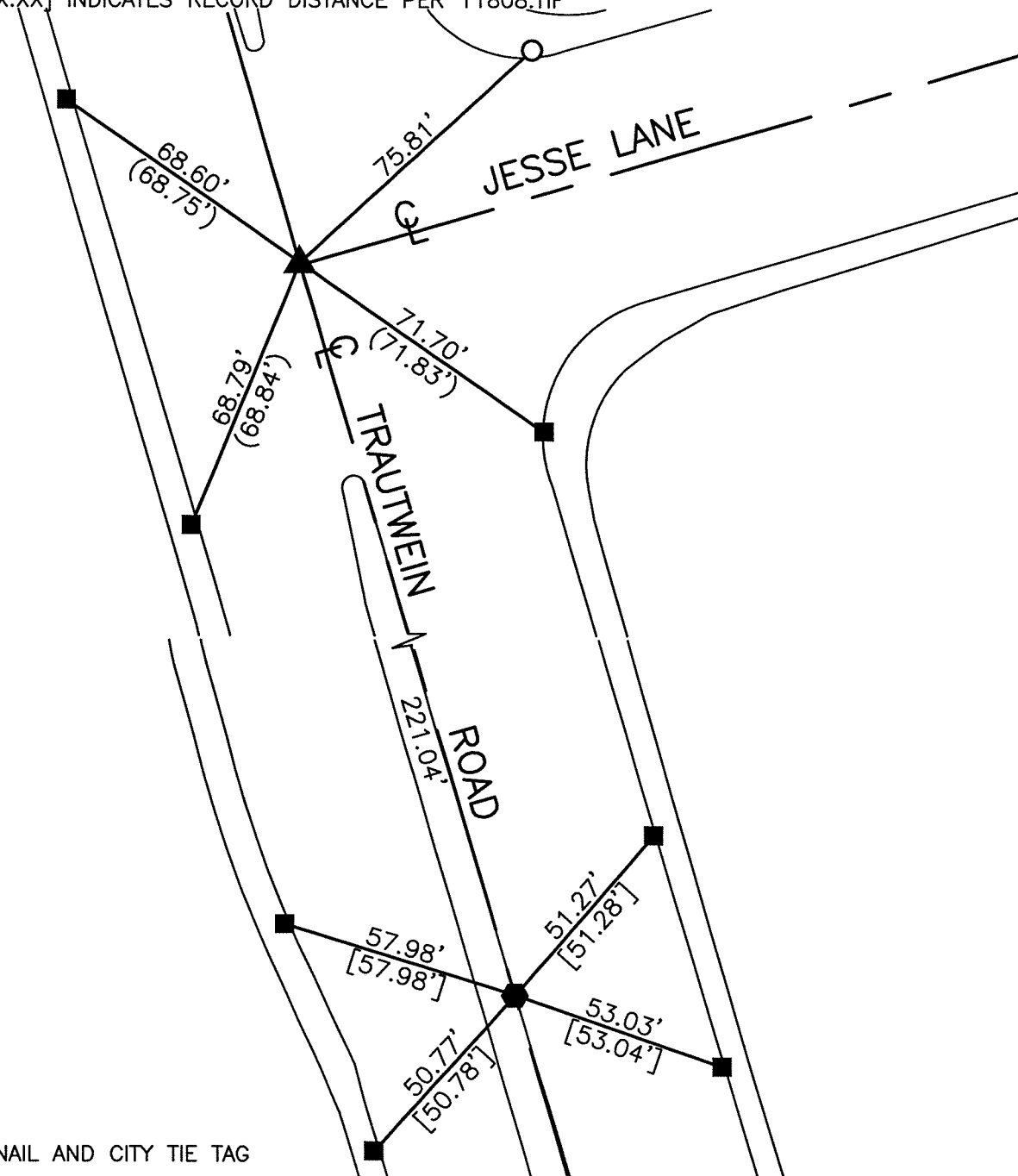


# SWING TIES

REF: (XX.XX) INDICATES RECORD DISTANCE PER 5744.TIF  
 [XX.XX] INDICATES RECORD DISTANCE PER 11808.TIF



- - SET NAIL AND CITY TIE TAG
- - FOUND RAMSET NAIL IN T.C.
- ▲ - FOUND 1" I.P. HOLLOW, FLUSH, SET MAG NAIL AND WASHER STAMPED 'RIVERSIDE CITY SURVEYOR' AFTER CONSTRUCTION
- ◆ - FOUND SPIKE AND WASHER STAMPED 'RCE 17550', FLUSH, SET MAG NAIL AND WASHER STAMPED "RIVERSIDE CITY SURVEYOR" AFTER CONSTRUCTION

14841.TIF  
 STREET: TRAUTWEIN ROAD  
 X-STREET: JESSE LANE & TRACT 28491  
 OFFICIAL USE ONLY  
 SLY BOUNDARY

SCALE:	1"=40'
DATE:	12/3/14
DRAWN BY:	JDF
F.B.:	
SEC:	T.3S., R.4W SEC. 17

**OFFICIAL TIE PLAT**  
 CITY OF RIVERSIDE

THESE TIES ARE FOR THE PURPOSE OF PERPETUATING THE FOUND MONUMENTATION. NO CLAIM IS MADE AS THE RELATIONSHIP OF THE POINTS OR LINES SHOWN HEREON TO TRUE BOUNDARY LOCATIONS

SHEET 1 OF 1