

SWING TIES

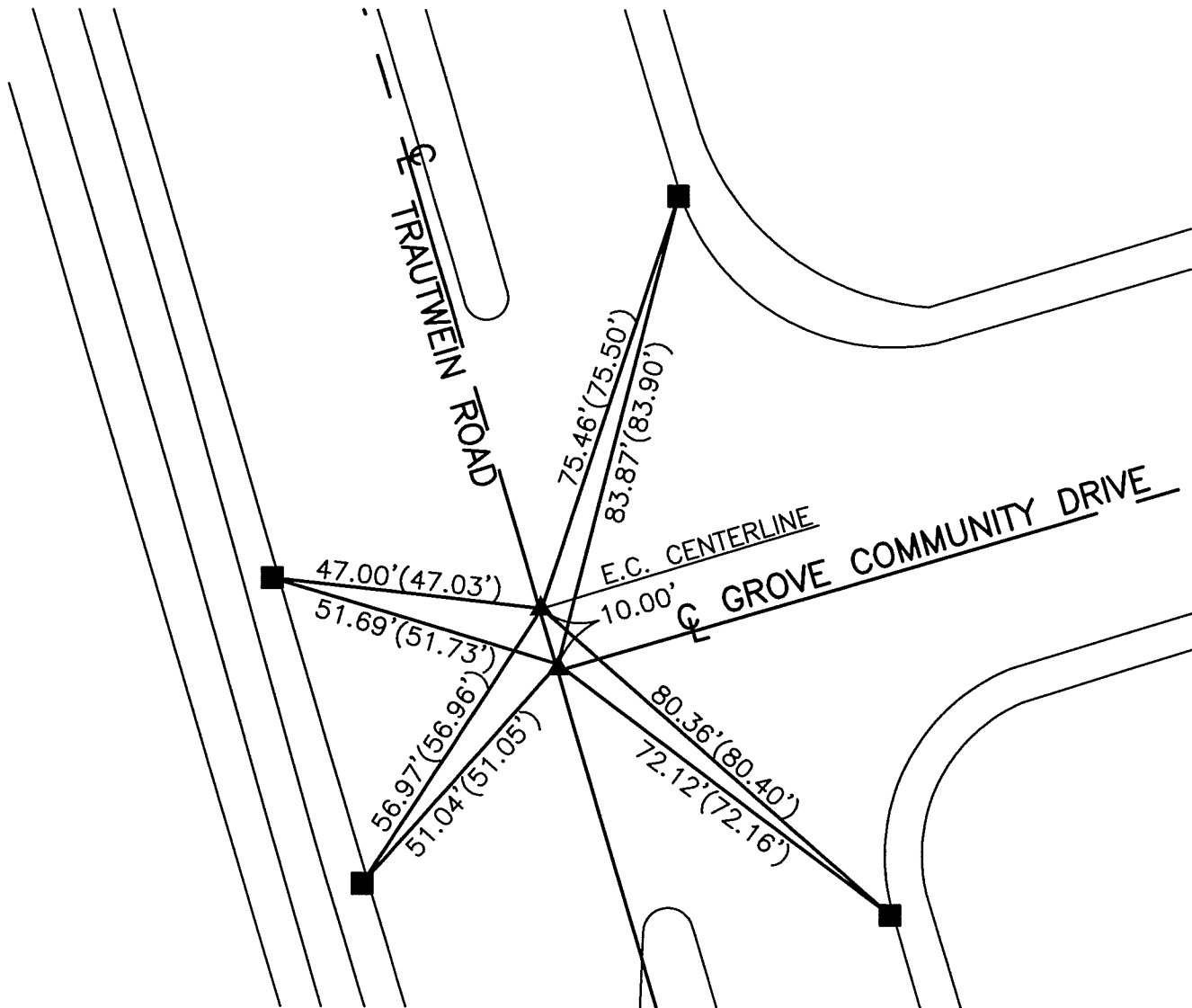
REF: (XX.XX) INDICATES RECORD DISTANCE PER 11547.TIF

14843.TIF

STREET: TRAUTWEIN ROAD

OFFICIAL USE ONLY

X-STREET: GROVE COMMUNITY DRIVE



- - FOUND RAMSET NAIL IN T.C.
- ▲ - FOUND SPIKE AND WASHER STAMPED 'RCE 17550', FLUSH, SET MAG NAIL AND WASHER STAMPED "RIVERSIDE CITY SURVEYOR" AFTER CONSTRUCTION'

SCALE: 1"=30'
DATE: 12/3/14
DRAWN BY: JDF
F.B.:
SEC: T.3S., R.4W SEC. 20

OFFICIAL TIE PLAT CITY OF RIVERSIDE

THESE TIES ARE FOR THE PURPOSE OF PERPETUATING THE FOUND MONUMENTATION. NO CLAIM IS MADE AS THE RELATIONSHIP OF THE POINTS OR LINES SHOWN HEREON TO TRUE BOUNDARY LOCATIONS



SHEET 1 OF 1