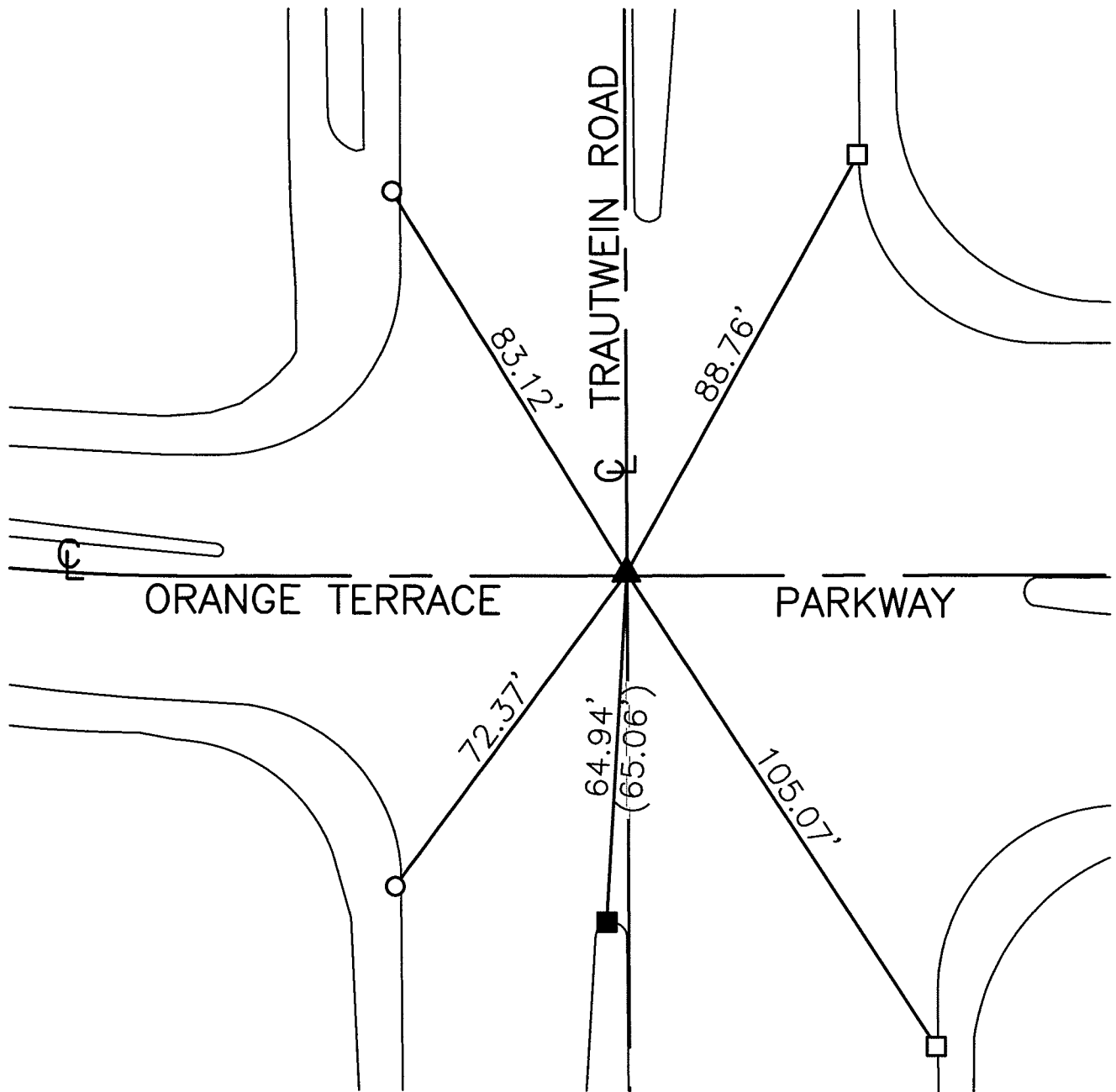


# SWING TIES

REF: (XX.XX) INDICATES RECORD DISTANCE PER 6117.TIF

14844.TIF



STREET: TRAUTWEIN ROAD

OFFICIAL USE ONLY

X-STREET: ORANGE TERRACE PARKWAY

- - SET NAIL & CITY TIE TAG IN T.C.
- - SET MAG NAIL
- - FOUND RAMSET NAIL IN T.C.
- ▲ - FOUND 1" I.P. W/ NAIL, FLUSH, SET MAG NAIL AND WASHER STAMPED "RIVERSIDE CITY SURVEYOR" AFTER CONSTRUCTION

SCALE: 1"=30'
DATE: 12/3/14
DRAWN BY: JDF
F.B.:
SEC: T.3S., R.4W SEC. 20

**OFFICIAL TIE PLAT**  
CITY OF RIVERSIDE

THESE TIES ARE FOR THE PURPOSE OF PERPETUATING THE FOUND MONUMENTATION. NO CLAIM IS MADE AS THE RELATIONSHIP OF THE POINTS OR LINES SHOWN HEREON TO TRUE BOUNDARY LOCATIONS

SHEET 1 OF 1