

SWING TIES

REF: (XX.XX) INDICATES RECORD DISTANCE PER 7836.TIF

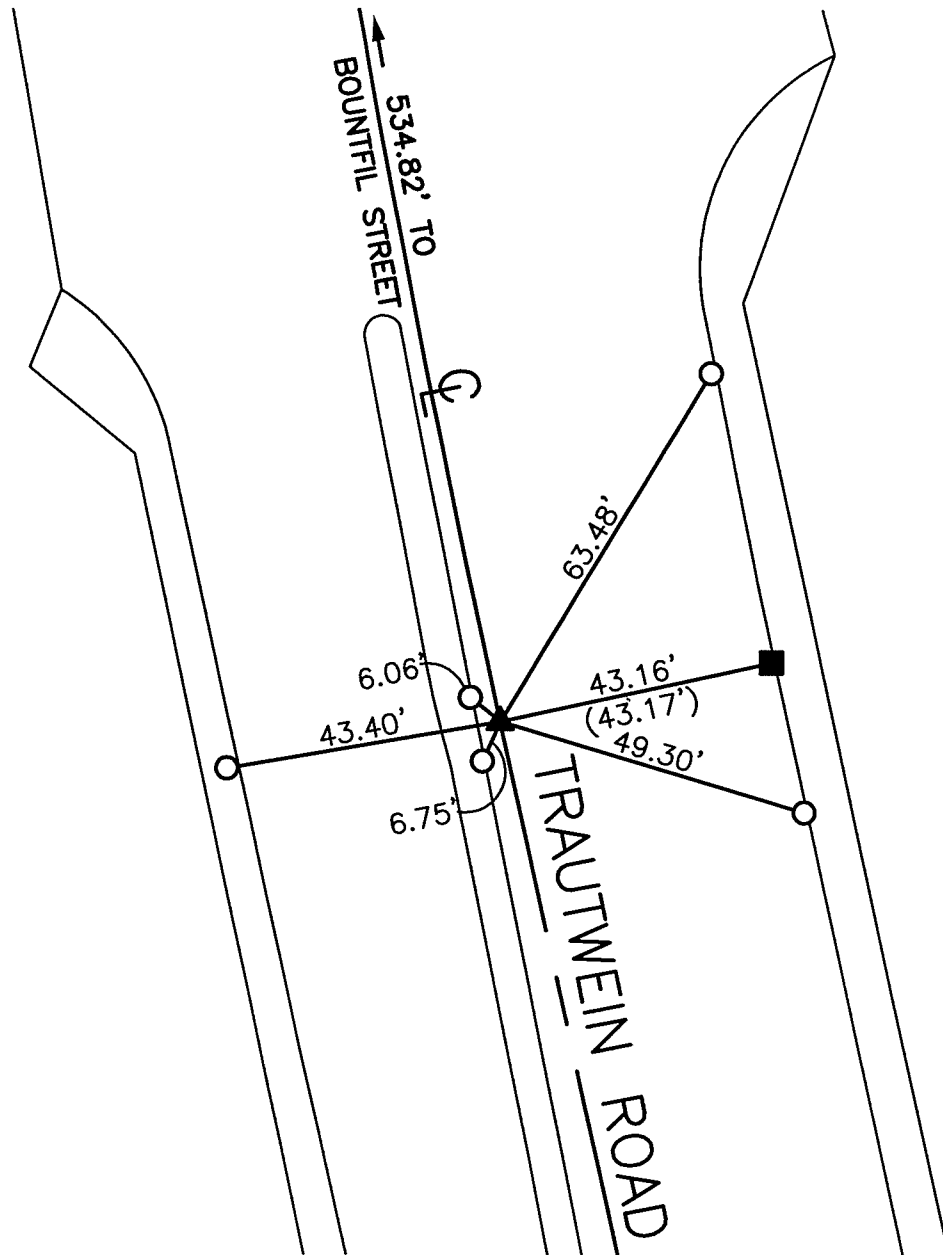
19845.TIF

STREET: TRAUTWEIN ROAD

OFFICIAL USE ONLY

X-STREET:

CL BC 534' SLY OF
BOUNTIFIL STREET



- - SET NAIL & CITY TIE TAG IN T.C.
- - FOUND RAMSET NAIL IN T.C.
- ▲ - FOUND PK NAIL, FLUSH, NO REFERENCE, SET MAG NAIL AND WASHER STAMPED "RIVERSIDE CITY SURVEYOR" AFTER CONSTRUCTION

SCALE: 1"=30'
DATE: 12/3/14
DRAWN BY: JDF
F.B.:
SEC: T.3S., R.4W SEC. 20

OFFICIAL TIE PLAT CITY OF RIVERSIDE

THESE TIES ARE FOR THE PURPOSE OF PERPETUATING THE FOUND MONUMENTATION. NO CLAIM IS MADE AS THE RELATIONSHIP OF THE POINTS OR LINES SHOWN HEREON TO TRUE BOUNDARY LOCATIONS



SHEET 1 OF 1