

SWING TIES

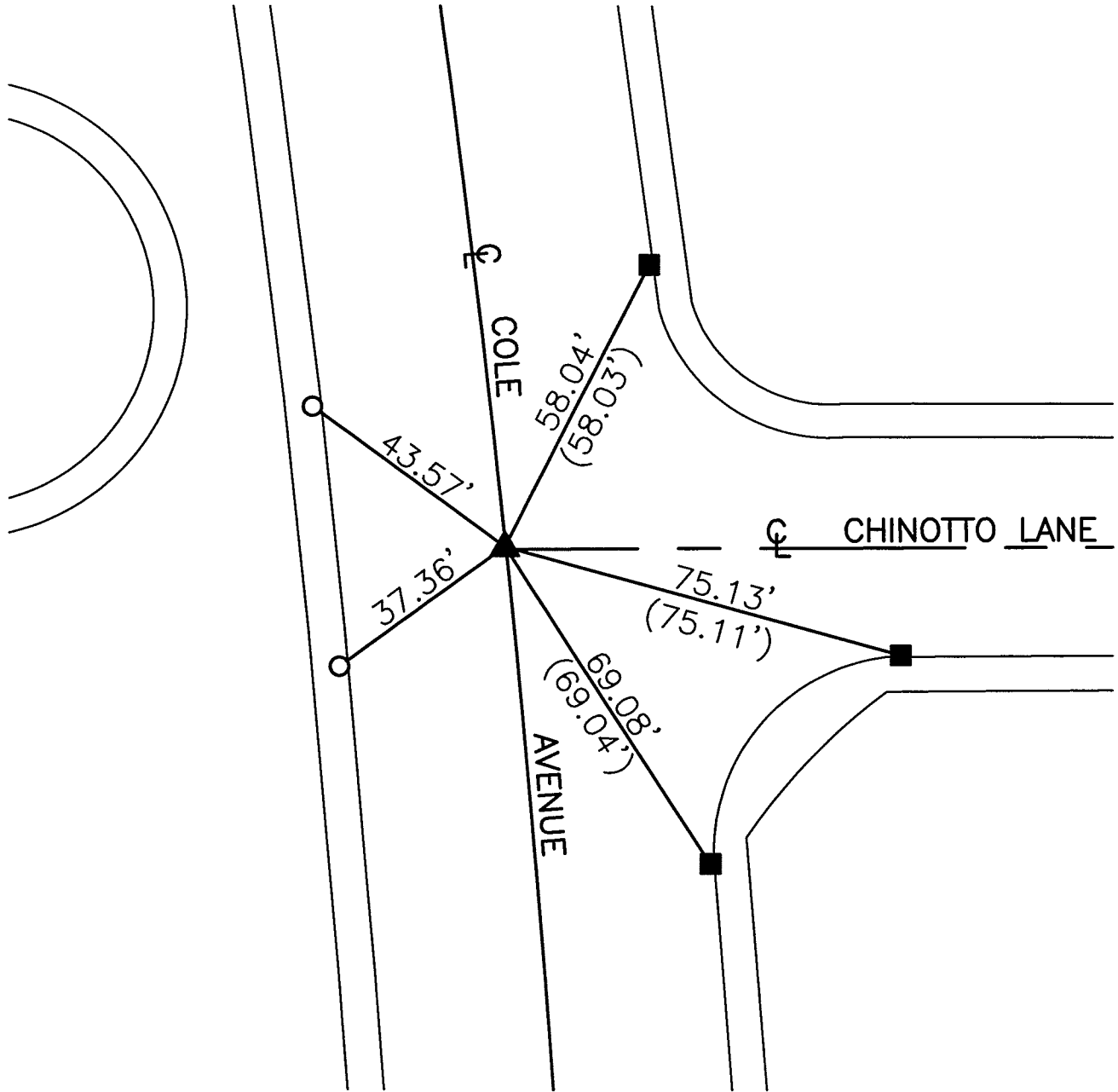
REF: (XX.XX) INDICATES RECORD DISTANCE PER 7691.TIF, FB 9946/91

14848.TIF

STREET: COLE AVENUE

OFFICIAL USE ONLY

X-STREET: CHINOTTO LANE



- — SET NAIL & CITY TIE TAG IN T.C.
- — FOUND RAMSET NAIL IN T.C.
- ▲ — FOUND NAIL AND TIN (NO REFERENCE), SET MAG NAIL AND WASHER STAMPED "RIVERSIDE CITY SURVEYOR" AFTER CONSTRUCTION

SCALE: 1"=30'
DATE: 12/3/14
DRAWN BY: JDF
F.B.:
SEC: T.3S., R.4W SEC. 29

OFFICIAL TIE PLAT

CITY OF RIVERSIDE

THESE TIES ARE FOR THE PURPOSE OF PERPETUATING THE FOUND MONUMENTATION. NO CLAIM IS MADE AS THE RELATIONSHIP OF THE POINTS OR LINES SHOWN HEREON TO TRUE BOUNDARY LOCATIONS

SHEET 1 OF 1