

14852.TIF

Street: Brockton Ave.

X-Street: Linwood Pl.

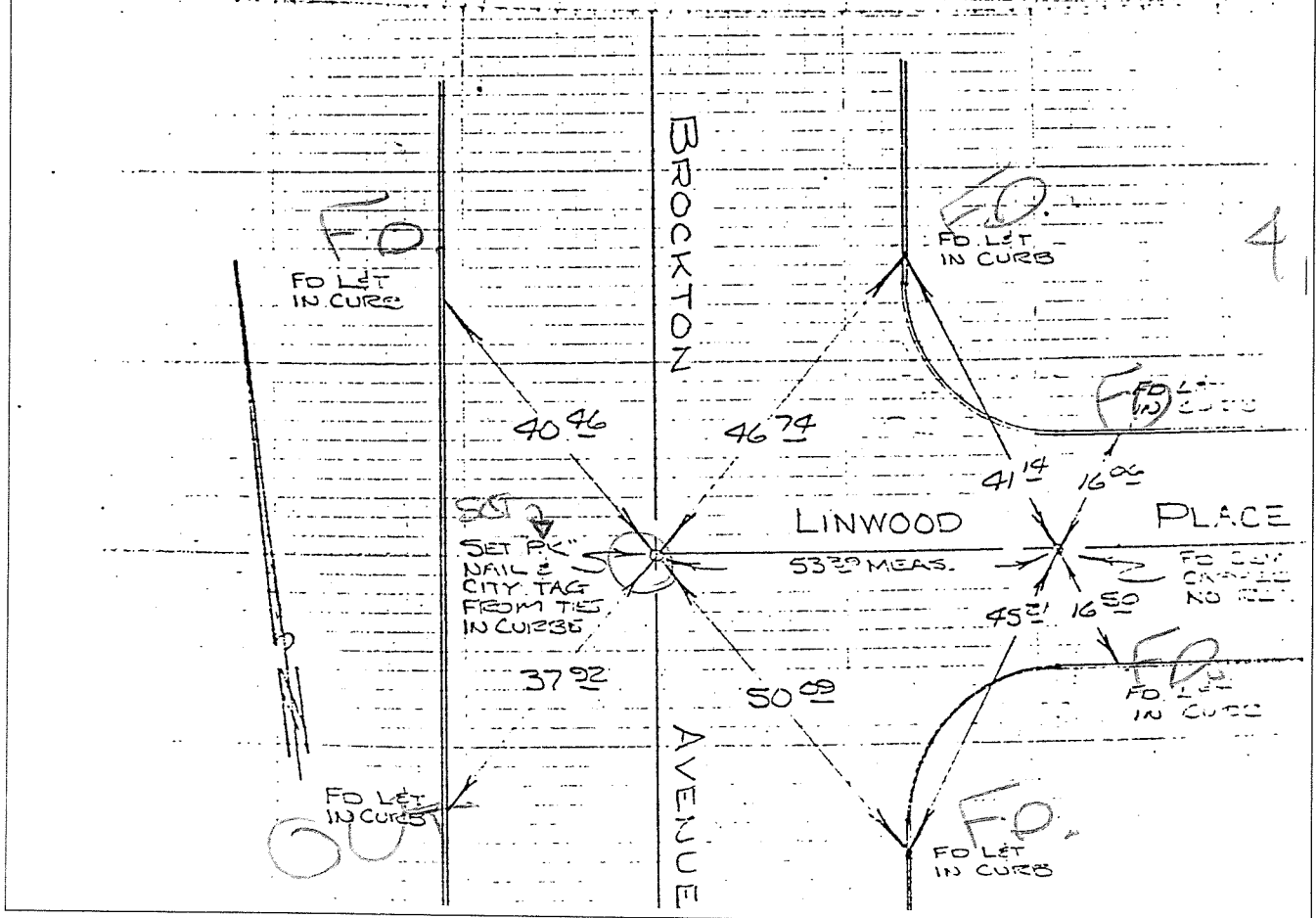
OFFICIAL USE ONLY

TRANSIT TIES

HISTORICAL DATA

F.B. ~~443~~<sup>484</sup>/12-16

CREW:  
 STEELE.  
 MORGAN  
 JORDAN  
 JUNE 19, 1968  
 F.B. 552/10

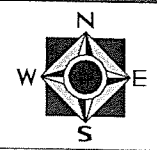


- ✕ FD. Ramset Nail on T/C
  - FD. LD. & TK. on T/C
  - FD. "C" Nail on T/C
  - Set LD. & TK. on T/C
- P.K. and City Engineer tag to be set @ surface after street construction is complete. (If possible)

Scale: .  
 Date: .  
 Drawn by: .  
 F.B.: .  
 TR-

**OFFICIAL TIE PLAT**  
 CITY OF RIVERSIDE

*These ties are for the purpose of perpetuating the found monumentation. No claim is made as to the relationship of the points or lines shown hereon to true boundary locations.*



Cadme MB: 49-3