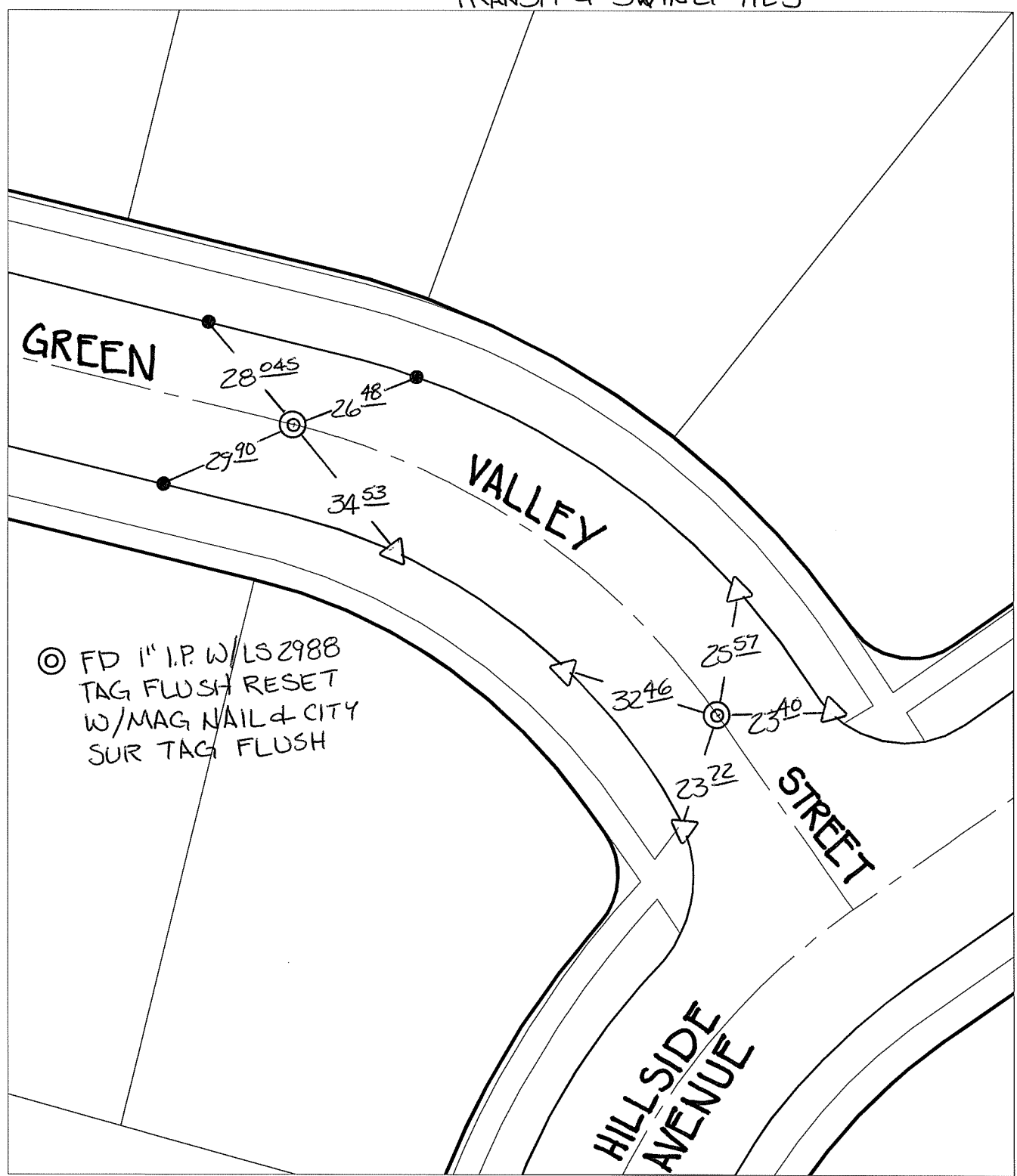


14854.J1E

Street: GREEN VALLEY STREET BC & X-Street: EC NW OF HILLSIDE AVE

OFFICIAL USE ONLY

TRANSIT & SWING TIES




⊗ FD 1" I.P. W/ LS 2988  
 TAG FLUSH RESET  
 W/MAG NAIL & CITY  
 SUR TAG FLUSH

- × FD. Ramset Nail on T/C
  - FD. LD. & TK. on T/C
  - FD. "C" Nail on T/C
  - Set LD. & TK. on T/C
- P.K. and City Engineer tag to be set @ surface after street construction is complete. (If possible)

Scale: 1" = 30'  
 Date: 05/07/14  
 Drawn by: pw  
 F.B.:  
 TR-Sec: T2SR5W-32

**OFFICIAL TIE PLAT**  
**CITY OF RIVERSIDE**

*These ties are for the purpose of perpetuating the found monumentation. No claim is made as to the relationship of the points or lines shown hereon to true boundary locations.*



Sheet 1 of 1  
 Cadme MB: 51-4