

14865.TIF

Street:

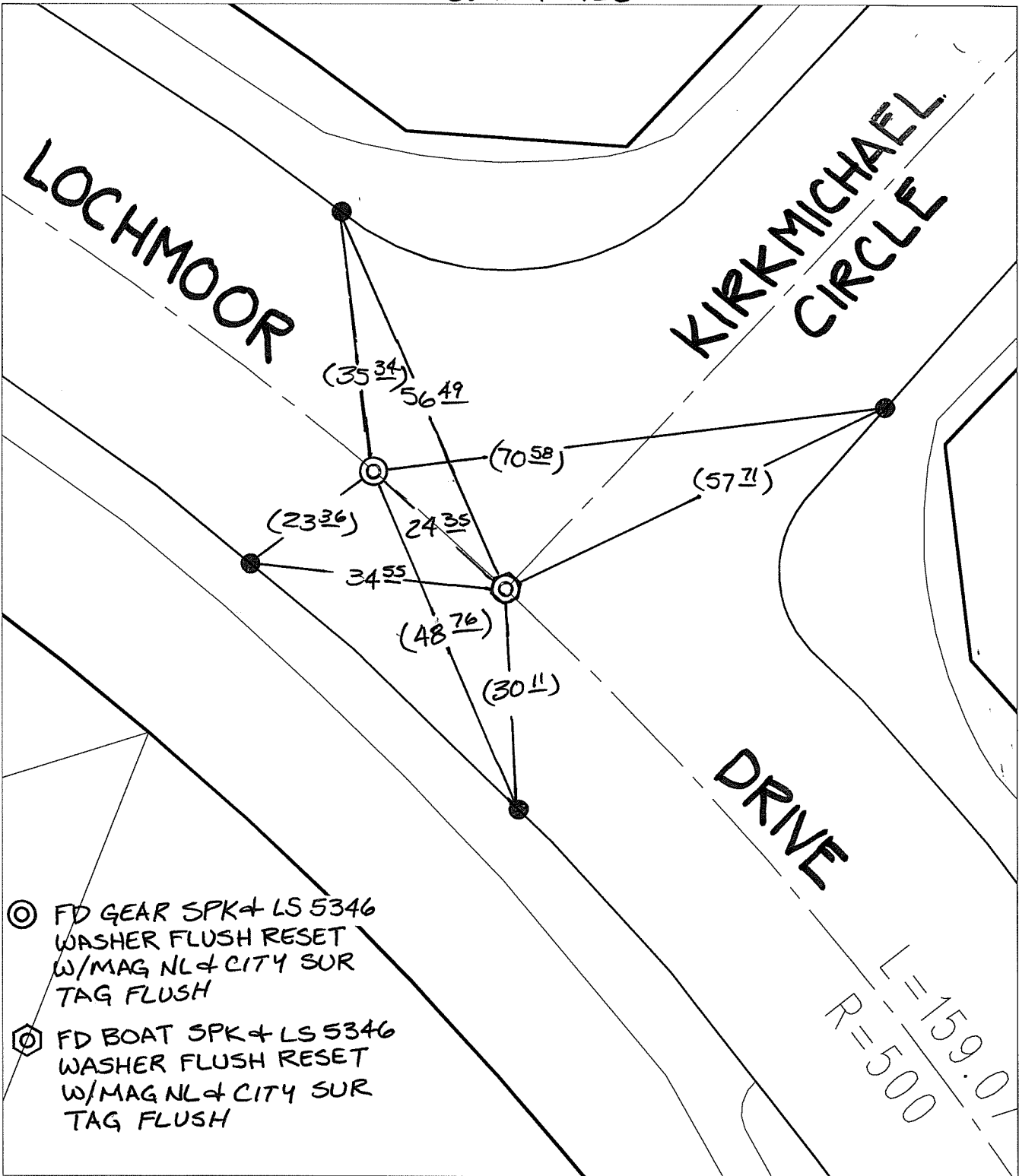
KIRKMICHAEL CIRCLE

OFFICIAL USE ONLY

X-Street:

LOCHMOOR DRIVE

SWING TIES



⊗ FD GEAR SPK & LS 5346
 WASHER FLUSH RESET
 W/MAG NL & CITY SUR
 TAG FLUSH

⊙ FD BOAT SPK & LS 5346
 WASHER FLUSH RESET
 W/MAG NL & CITY SUR
 TAG FLUSH

- ⊗ FD. Ramset Nail on T/C
- FD. LD. & TK. on T/C
- FD. "C" Nail on T/C
- Set LD. & TK. on T/C

P.K. and City Engineer tag to be set @
 surface after street construction is
 complete. (If possible)

Scale: 1" = 20'
 Date: 01/21/15
 Drawn by: pw
 F.B.: 2
 TR-Sec: T2SR4W-33

OFFICIAL TIE PLAT

CITY OF RIVERSIDE

*These ties are for the purpose of perpetuating the found
 monumentation. No claim is made as to the relationship of
 the points or lines shown hereon to true boundary locations.*



Sheet 1 of 1
 Cadme MB: 58-3