

14867.TIF

Street:

FAIR ISLE DRIVE

OFFICIAL USE ONLY

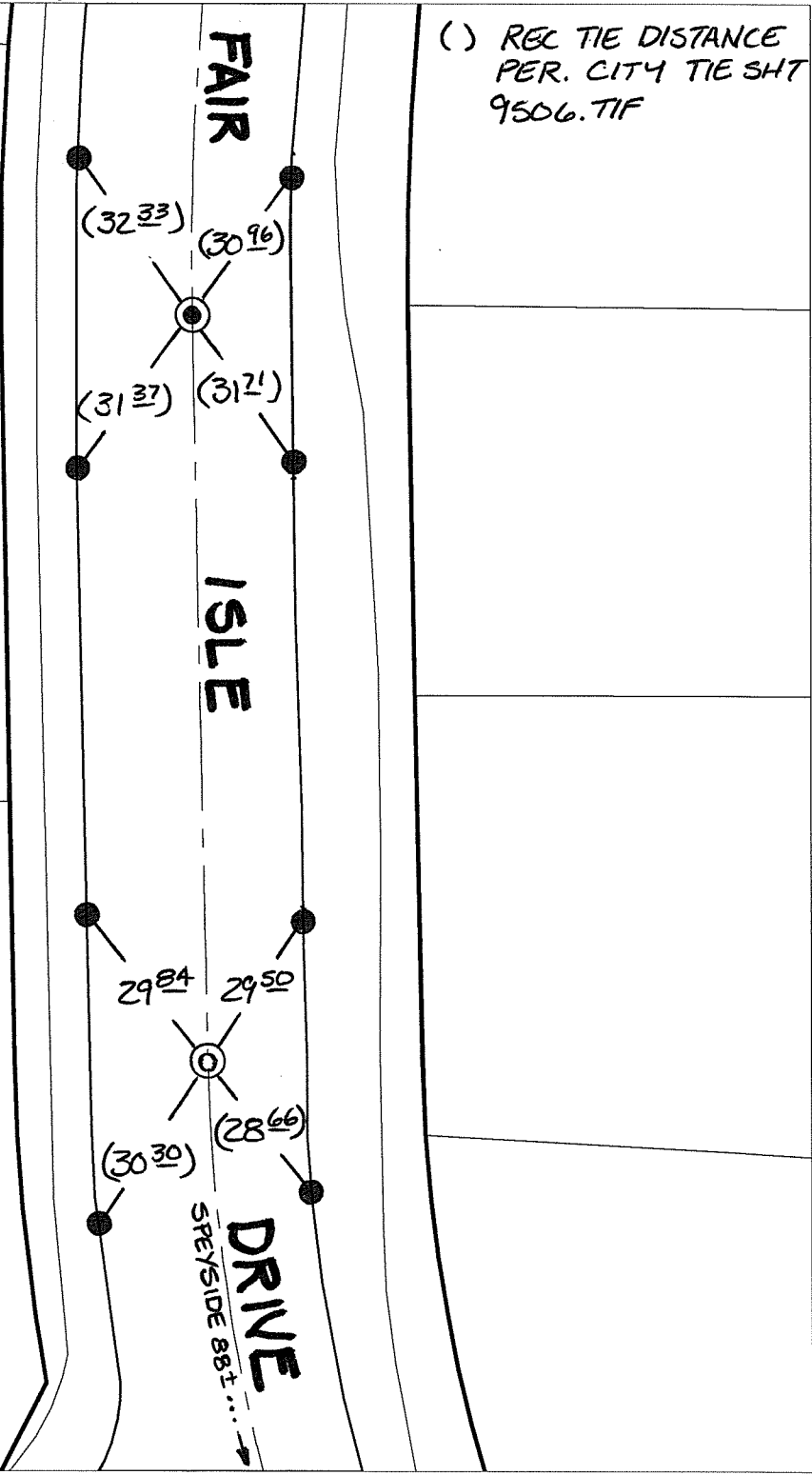
X-Street: EC & BC N. OF SPEYSIDE

TRANSIT TIES

() REC TIE DISTANCE PER. CITY TIE SH7 9506.TIF

FD GEAR SPIKE + LS 5346 STAMPED WASHER FLUSH

FD GEAR SPIKE + LS 5346 STAMPED WASHER RESET W/ MAG NAIL + CITY SUR TAG FLUSH



- × FD. Ramset Nail on T/C
- FD. LD. & TK. on T/C
- FD. "C" Nail on T/C
- Set LD. & TK. on T/C

P.K. and City Engineer tag to be set @ surface after street construction is complete. (If possible)

Scale: 1" = 30'

Date: 05/08/16

Drawn by: pw

F.B.:

TR-Sec: T3SR4W-4

OFFICIAL TIE PLAT

CITY OF RIVERSIDE

These ties are for the purpose of perpetuating the found monumentation. No claim is made as to the relationship of the points or lines shown hereon to true boundary locations.



Sheet 1 of 1

Cadme MB: 58-5