

14872.TIF

Street:

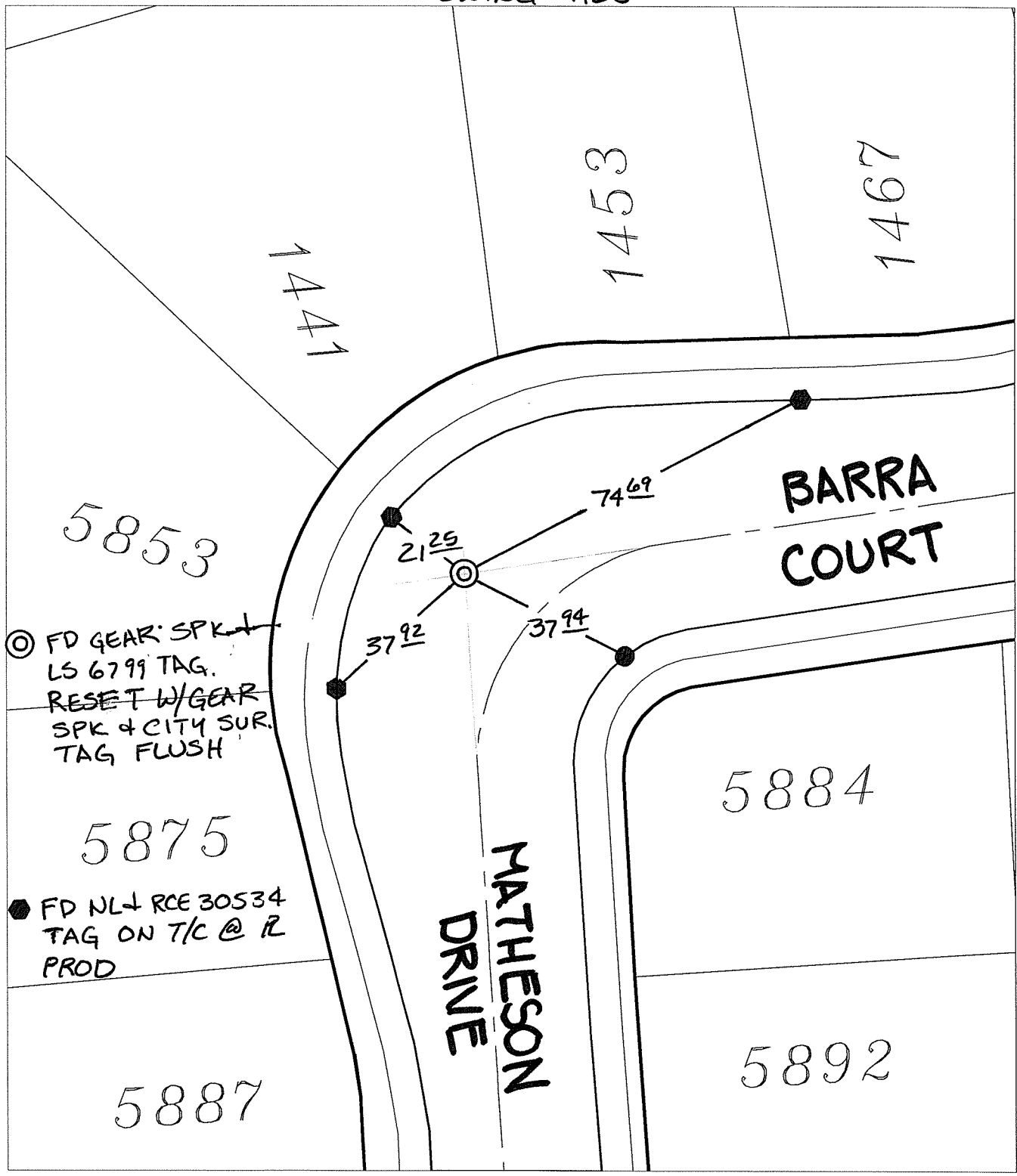
MATHESON DRIVE

X-Street:

BARRA COURT

OFFICIAL USE ONLY

SWING TIES



⊙ FD GEAR SPK
 LS 6799 TAG.
 RESET W/GEAR
 SPK & CITY SUR.
 TAG FLUSH

● FD NL ↓ RCE 30534
 TAG ON T/C @ R
 PROD


- × FD. Ramset Nail on T/C
- FD. LD. & TK. on T/C
- FD. "C" Nail on T/C
- Set LD. & TK. on T/C

P.K. and City Engineer tag to be set @
 surface after street construction is
 complete. (If possible)

Scale: 1" = 30'
 Date: 06/06/16
 Drawn by: pw
 F.B.:
 TR-Sec: T3SR4W-4

OFFICIAL TIE PLAT
CITY OF RIVERSIDE

*These ties are for the purpose of perpetuating the found
 monumentation. No claim is made as to the relationship of
 the points or lines shown hereon to true boundary locations.*



Sheet 1 of 1
 Cadme MB: 58-5