

14875.71E

Street:

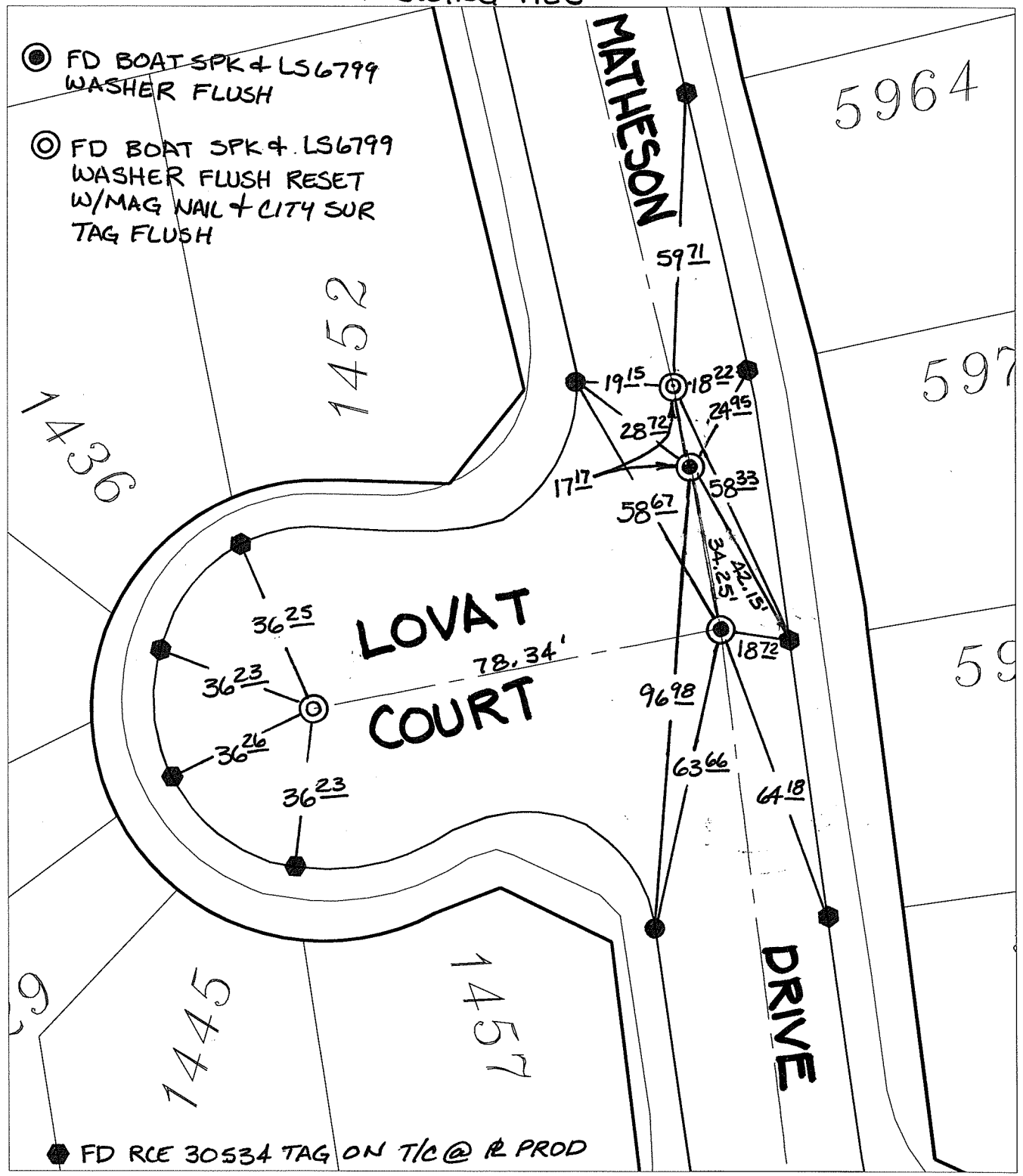
MATHESON DRIVE

X-Street:
OFFICIAL USE ONLY

LOVAT COURT

SWING TIES

- FD BOAT SPK & LS6799 WASHER FLUSH
- FD BOAT SPK & LS6799 WASHER FLUSH RESET W/MAG NAIL & CITY SUR TAG FLUSH



● FD RCE 30534 TAG ON T/C @ R PROD

- × FD. Ramset Nail on T/C
- FD. LD. & TK. on T/C
- FD. "C" Nail on T/C
- Set LD. & TK. on T/C

P.K. and City Engineer tag to be set @ surface after street construction is complete. (If possible)

Scale: 1" = 30'

Date: 07/01/16

Drawn by: pw

F.B.:

TR-Sec: T3SR4W-4

OFFICIAL TIE PLAT
CITY OF RIVERSIDE

These ties are for the purpose of perpetuating the found monumentation. No claim is made as to the relationship of the points or lines shown hereon to true boundary locations.

Sheet 1 of 1

Cadme MB: 58-5