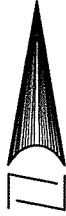


PARCEL MAP 34631

PMB 242 / 69 - 71

SHEET 1 OF 3 SHEETS

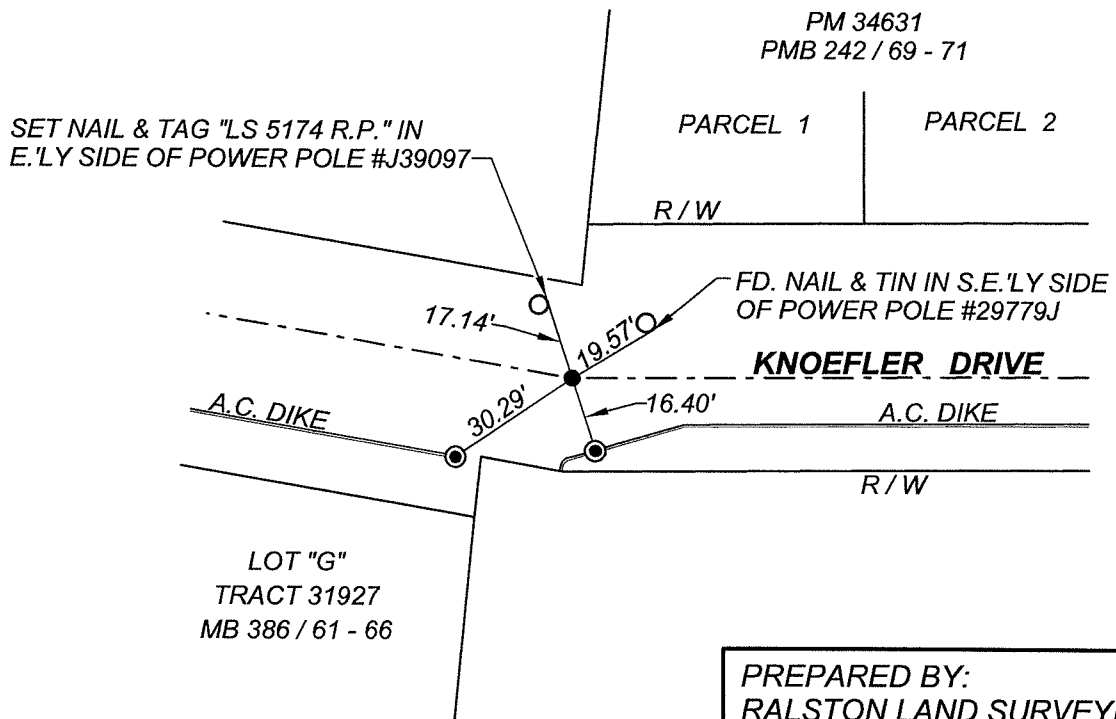
14889.TIF



SCALE: 1" = 40'

SURVEYOR'S NOTES

- INDICATES FD. HOLE IN PAVEMENT, FITS LAST REMAINING TIE PER CITY OFFICIAL TIES PLAT #5061.TIF, ACCEPTED AS CL KNOEFLER DR. SET 1" IP & TAG STAMPED "LS 5174," FLUSH
- ⊙ INDICATES SET NAIL & TAG "LS 5174 R.P." IN TOP OF A.C. DIKE



PREPARED BY:
RALSTON LAND SURVEYING
Chester F. Ralston
CHESTER F. RALSTON LS 5174



**CITY OF RIVERSIDE
CENTER LINE TIES FOR
KNOEFLER DRIVE**