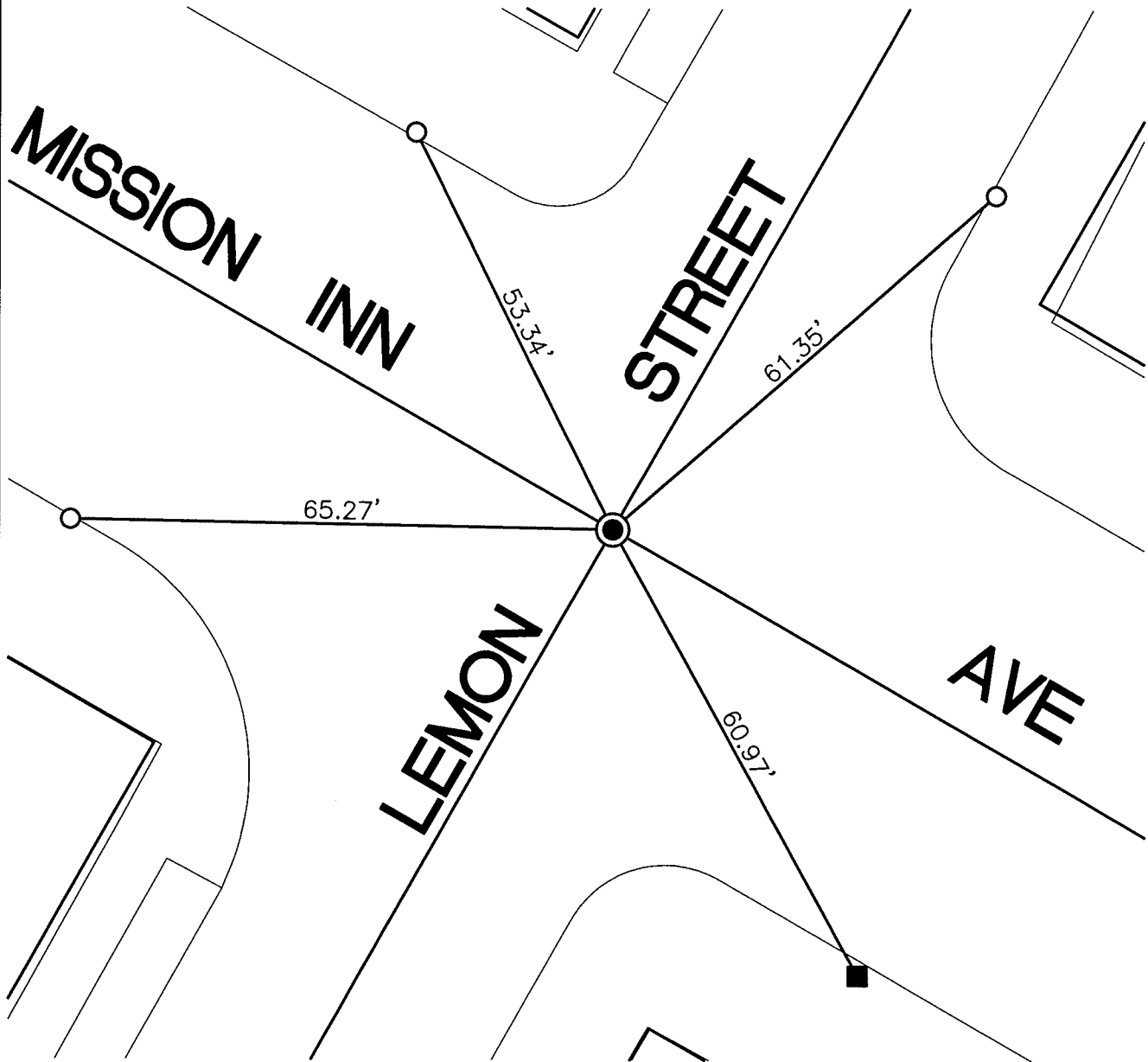


# SWING TIES

14892.TIF

HISTORICAL DATA  
 CRFB 683/60  
 CRFB 11/63  
 4812.TIF



STREET: MISSION INN AVENUE  
 X-STREET: LEMON STREET  
 OFFICIAL USE ONLY

- - FOUND NAIL AND CITY TIE TAG IN T.C.
- - SET CTT IN T.C.
- ⊙ - FOUND NOTHING, SET MAG NAIL AND WASHER STAMPED "RIVERSIDE CITY SURVEYOR"

SCALE: 1"=20'  
 DATE: OCTOBER 29, 2018  
 DRAWN BY: JDF  
 F.B.:  
 SEC: 23 T.2S.,R.5W

## OFFICIAL TIE PLAT CITY OF RIVERSIDE

THESE TIES ARE FOR THE PURPOSE OF PERPETUATING THE FOUND MONUMENTATION. NO CLAIM IS MADE AS THE RELATIONSHIP OF THE POINTS OR LINES SHOWN HEREON TO TRUE BOUNDARY LOCATIONS

