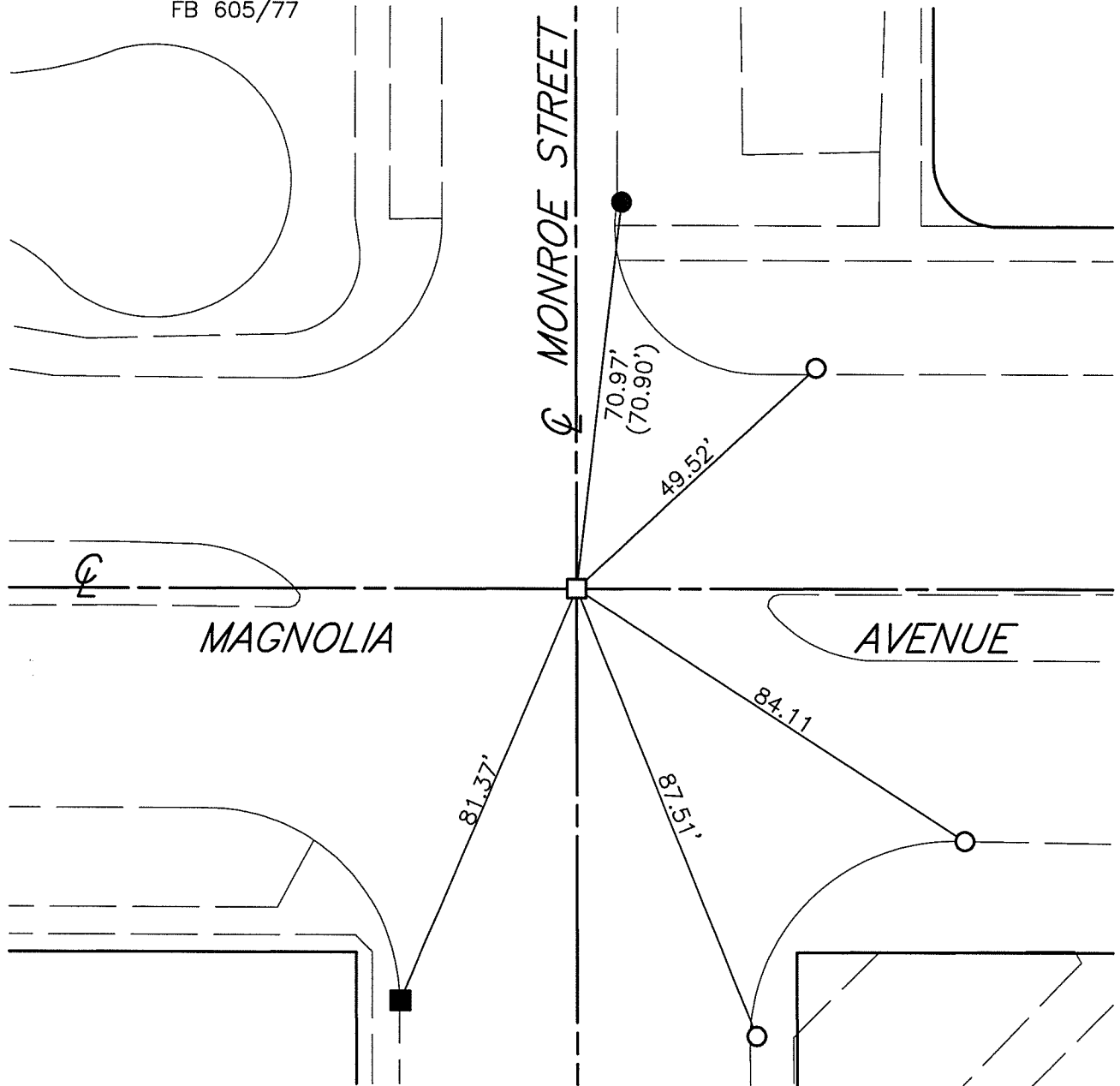


SWING TIES

REF: (XX.XX) INDICATES RECORD DISTANCE PER 5813.TIF
 FB 735/9
 FB C-5/72
 FB 605/77



- - SET NAIL & CITY TIE TAG IN T.C.
- - FOUND LEAD & TACK IN T.C.
- - FOUND TACK & TAG 'LS 6390' T.C.
- - FOUND CITY OF RIVERSIDE TYPE 'A' MON. STAMPED F4-C, SET MAG NAIL AND WASHER STAMPED "RIVERSIDE CITY SURVEYOR" AFTER CONSTRUCTION 12/23/14

14894.TIF

STREET: MAGNOLIA AVENUE

X-STREET: MONROE STREET

OFFICIAL USE ONLY

SCALE:	1"=30'
DATE:	4/9/15
DRAWN BY:	JDF
F.B.:	
SEC:	T.3S., R.5W SEC. 5

OFFICIAL TIE PLAT CITY OF RIVERSIDE

THESE TIES ARE FOR THE PURPOSE OF PERPETUATING THE FOUND MONUMENTATION. NO CLAIM IS MADE AS THE RELATIONSHIP OF THE POINTS OR LINES SHOWN HEREON TO TRUE BOUNDARY LOCATIONS

