

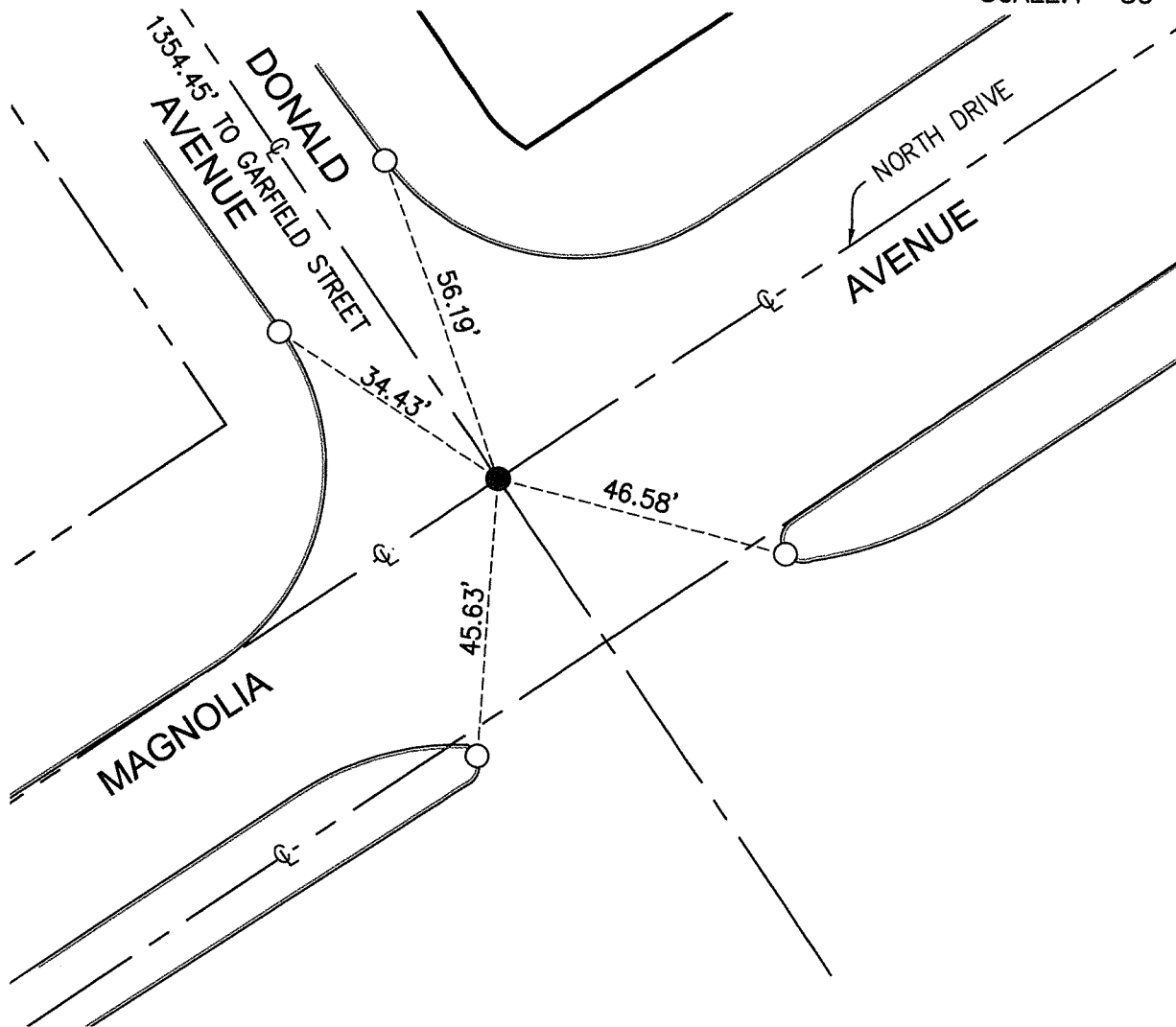
PARCEL MAP 36899

LEGEND

- - INDICATES SET LEAD AND DISC STAMPED
LS 8785 IN T.C.
- - INDICATES FOUND 3/4" I.P. TAGGED
LS 8785 DN 0.2' PER PARCEL MAP 36899



SCALE: 1" = 30'



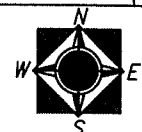
14895.T1E
STREET: MAGNOLIA AVENUE

X-STREET: DONALD AVENUE
OFFICIAL USE ONLY

SCALE: 1"=30
DATE: 04/20/16
DRAWN BY: RP
F.B.:
TR-SEC: 07 T.3S., R.5W

OFFICIAL TIE PLAT CITY OF RIVERSIDE

THESE TIES ARE FOR THE PURPOSE OF PERPETUATING THE FOUND MONUMENTATION. NO CLAIM IS MADE AS TO THE RELATIONSHIP OF THE POINTS OR LINES SHOWN HEREON TO TRUE BOUNDARY LOCATIONS



SHEET 1 OF 1