

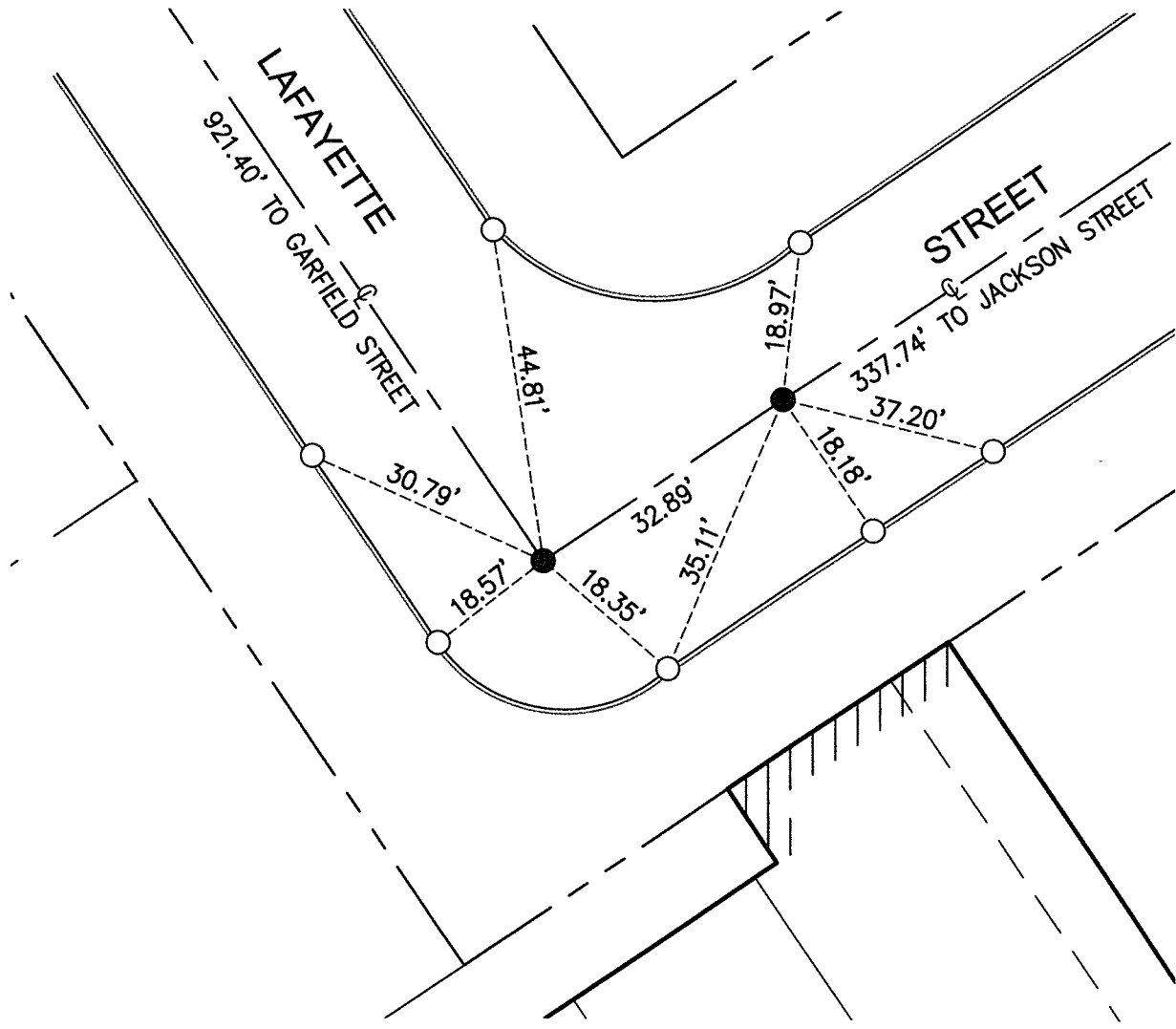
# PARCEL MAP 36899

## LEGEND

- - INDICATES SET LEAD AND DISC STAMPED  
LS 8785 IN T.C.
- - INDICATES FOUND 3/4" I.P. TAGGED  
LS 8785 DN 0.2' PER PARCEL MAP 36899



SCALE: 1"=20'

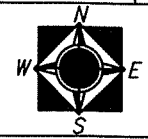


STREET: LAFAYETTE STREET  
 STREET: LAFAYETTE STREET  
 X-STREET: LAFAYETTE STREET  
 OFFICIAL USE ONLY

SCALE: 1"=20  
 DATE: 04/20/16  
 DRAWN BY: RP  
 F.B.:  
 TR-SEC: 07 T.3S.,R.5W

## OFFICIAL TIE PLAT CITY OF RIVERSIDE

THESE TIES ARE FOR THE PURPOSE OF PERPETUATING THE FOUND MONUMENTATION. NO CLAIM IS MADE AS TO THE RELATIONSHIP OF THE POINTS OR LINES SHOWN HEREON TO TRUE BOUNDARY LOCATIONS



SHEET 1 OF 1