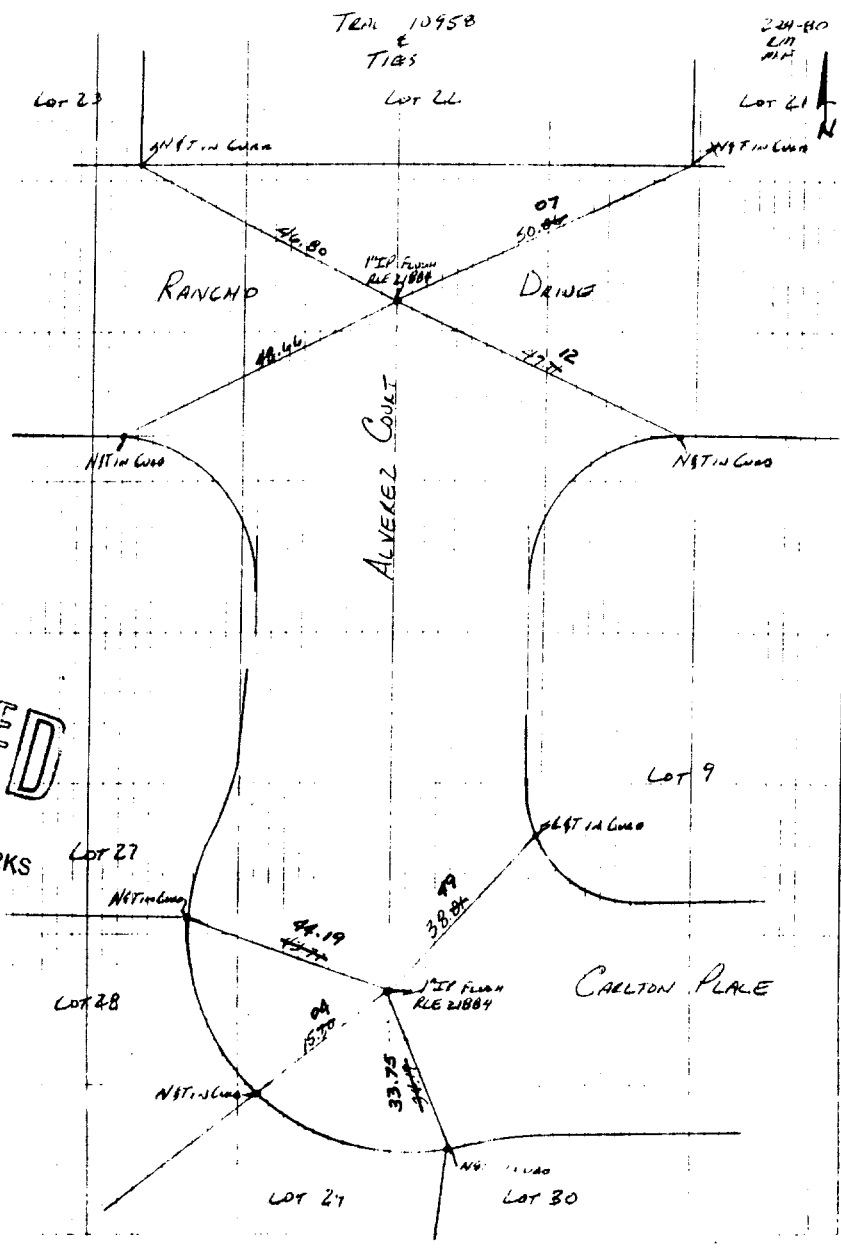


STREET ALVEREZ CT X-STREET RANCHO DR

OFFICE USE ONLY

149.71F  
ALVEREZ CT.  
C Rancho Dr.  
@ Carlton Pl.

L. D. LANSING & ASSOCIATES  
255 North 'D' St., Suite 205  
San Bernardino, CA 92401



RECEIVED  
MAR 3 1992

PT. OF PUBLIC WORKS

- ✕ FD. Ramset Nail on T/C
- FD. LD. & TK. on T/C
- FD. "C" Nail on T/C
- SET LD. & TK. On T/C

OFFICIAL TIE PLAT  
CITY OF RIVERSIDE

*These ties are for the purpose of perpetuating the found monumentation. No claim is made as to the relationship of the points or lines shown hereon to true boundary locations.*

SCALE:  
DATE:  
DR. BY:  
W.O.:  
F.B.:

SHEET  
OF SHEETS  
FILE NO.: