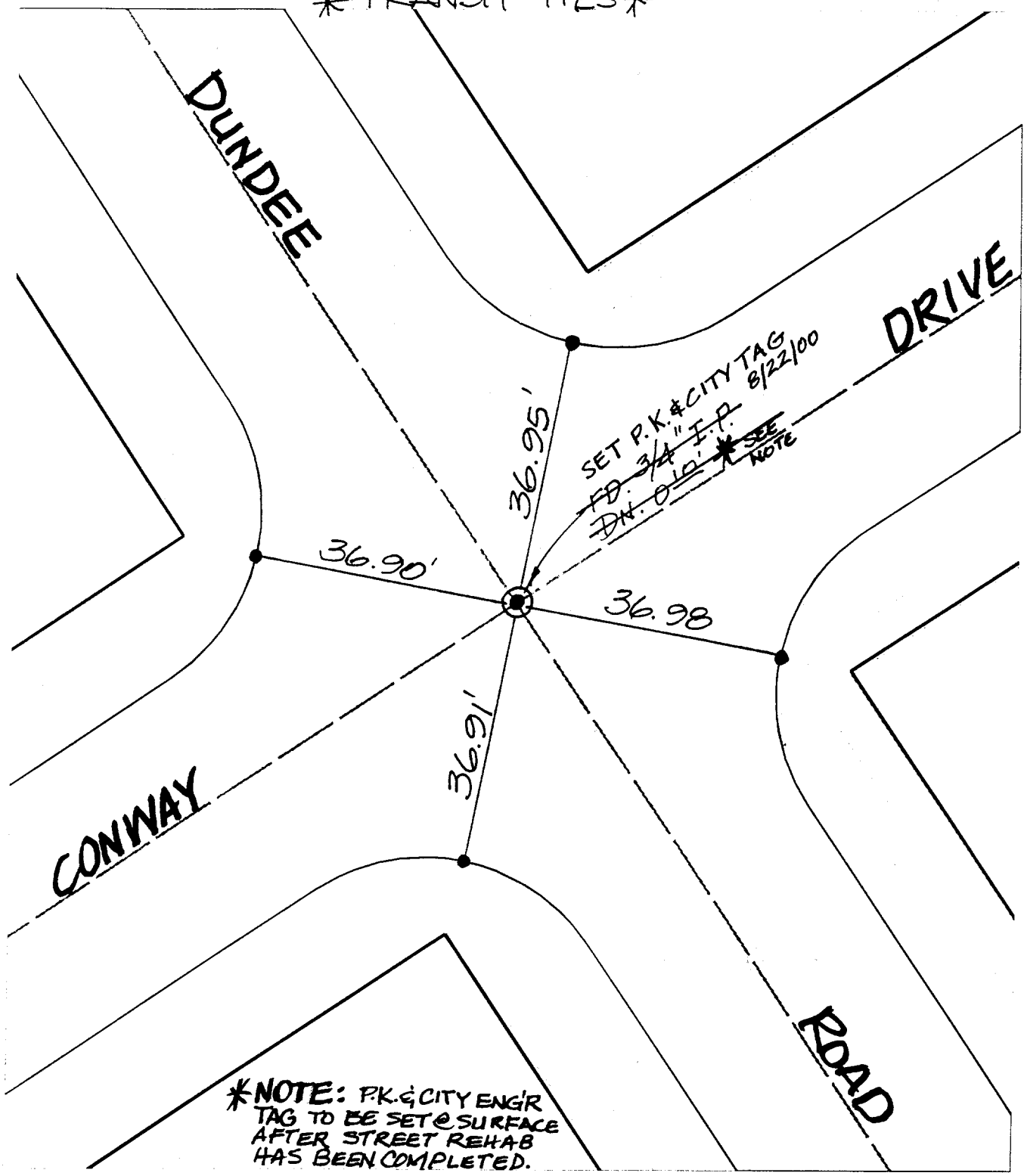


1496.71A

* TRANSIT TIES *



*NOTE: P.K. & CITY ENGR TAG TO BE SET @ SURFACE AFTER STREET REHAB HAS BEEN COMPLETED.

- ✕ FD. Ramset Nail on T/C
- FD. LD. & TK. on T/C
- FD. "C" Nail on T/C
- Set LD. & TK. on T/C

Street:

CONWAY DR.

X-Street: OFFICIAL USE ONLY

DUNDEE RD.

Scale: 1" = 20'
 Date: 08/05/99
 Drawn by: L. Harris
 W.O.:
 F.B.:

OFFICIAL TIE PLAT CITY OF RIVERSIDE



These ties are for the purpose of perpetuating the found monumentation. No claim is made as to the relationship of the points or lines shown hereon to true boundary locations.

Sheet of
 File No.: