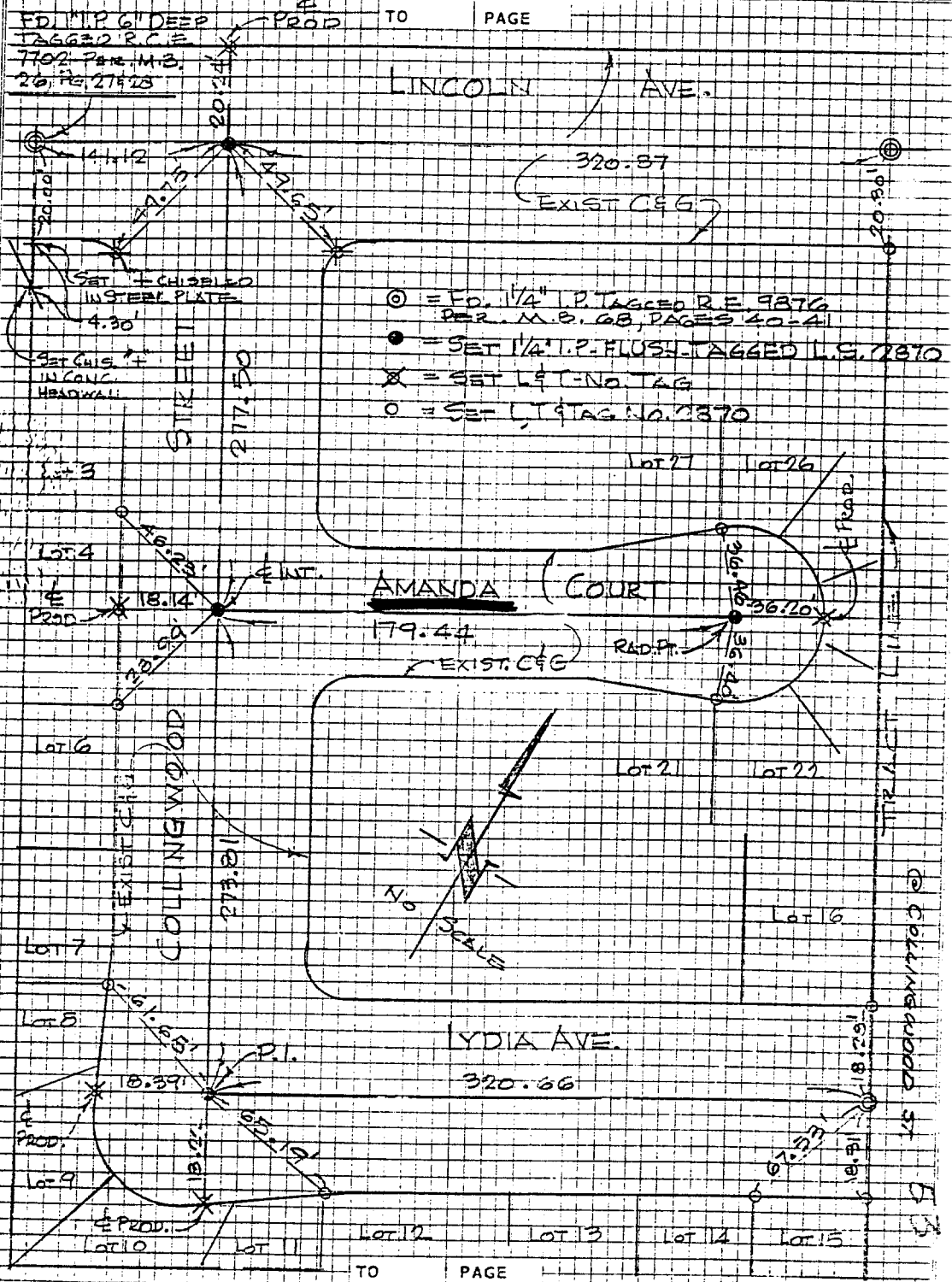


STREET AMANDA CT X-STREET COLLINGWOOD ST

150.71F



SHINN & ASSOCIATES
 SURVEY BY T.A. SHINN JR. DATE DEPT. 1972
 CHECKED BY I.S. DATE SEPT. 1972

- ✕ FD. Ramset Nail on T/C
- FD. LD. & TK. on T/C
- FD. "C" Nail on T/C
- SET LD. & TK. On T/C

SCALE:
 DATE:
 DR. BY:
 W.O.:
 F.B.:

OFFICIAL TIE PLAT
 CITY OF RIVERSIDE

These ties are for the purpose of perpetuating the found monumentation. No claim is made as to the relationship of the points or lines shown hereon to true boundary locations.

SHEET
 OF SHEETS
 FILE NO.: